

RS

SW
Sec 9
104
42

COPY

Index J-9

CERTIFICATE OF LOCATION OF GOVERNMENT CORNER

NORTHEAST Corner of Section 17, Township 104N, Range 42W

5th Principal Meridian, State of Minnesota, County of Nobles.

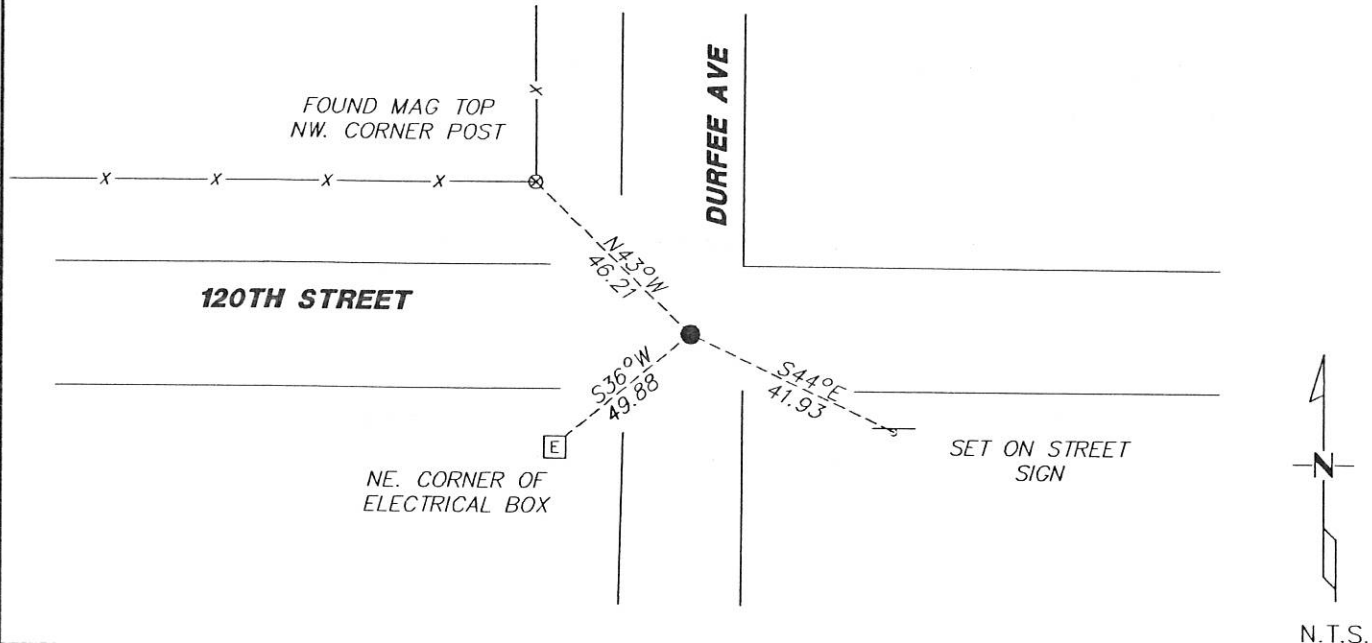
At the corner location shown on the sketch:

On 11/29/2017 found a 5/8" REBAR CAPPED LS 23008 AT ROAD CENTERLINE.
DATE

left monument as found lowered monument removed monument (explain)

On _____ placed a _____
DATE

SKETCH OF REFERENCE TIES



Statement of evidence for this corner location is on back of this page.

I hereby certify that this document was researched and prepared by me or under my direct supervision and that I am a licensed Land Surveyor under the laws of the State of Minnesota.

Signature [Handwritten Signature]

Date 2/7/18 License No. 49563

Title:

- Land Surveyor Professional Engineer
- County Surveyor County Engineer

DOCUMENT NUMBER A 357501
Certified, Filed and or Recorded on
March 06, 2018 2:59 PM

[Handwritten Signature: Lynn M. Wilson]

NOBLES COUNTY RECORDER
LYNN M. WILSON
507-295-5268

Pages: 2

Statement of Evidence:

J-9

Northeast Corner of Section 17, Township 104 North, Range 42 West, 5th Principal Meridian, Nobles County, Minnesota.

1868-Deputy Surveyor set a post in mound with pits

1894- Nobles County Highway Department "Corner Ties Book" calls for a stone set to mark the corner location.

1900- Nobles County Highway Department "Corner Ties Book" calls for a stone to mark the corner location.

1938- Nobles County Highway Department "Corner Ties Book" calls for a stone to mark the corner location.

2006 - Perry Zieske found a stone down 3.5' at the road intersection and placed a 5/8" rebar with cap 23008 over the stone and file a Certificate of Location doc. no. 308018

2017- Westwood Professional Services recovered a rebar with LS cap 23008 at the road centerline intersection. Ties were found or set as shown on the front of this certificate

Analysis of the recovered data, field evidence and survey measurements, indicates that the monument found is the correct perpetuation of this corner. For additional information concerning this corner please contact Westwood Professional Services.

[Handwritten signature]
3/1/15