

W1/4 Sec 13 104 42

CERTIFICATE OF LOCATION OF GOVERNMENT CORNER

EAST QUARTER _____ Corner of Section 14, Township 104N, Range 42W

5th Principal Meridian, State of Minnesota, County of Nobles.

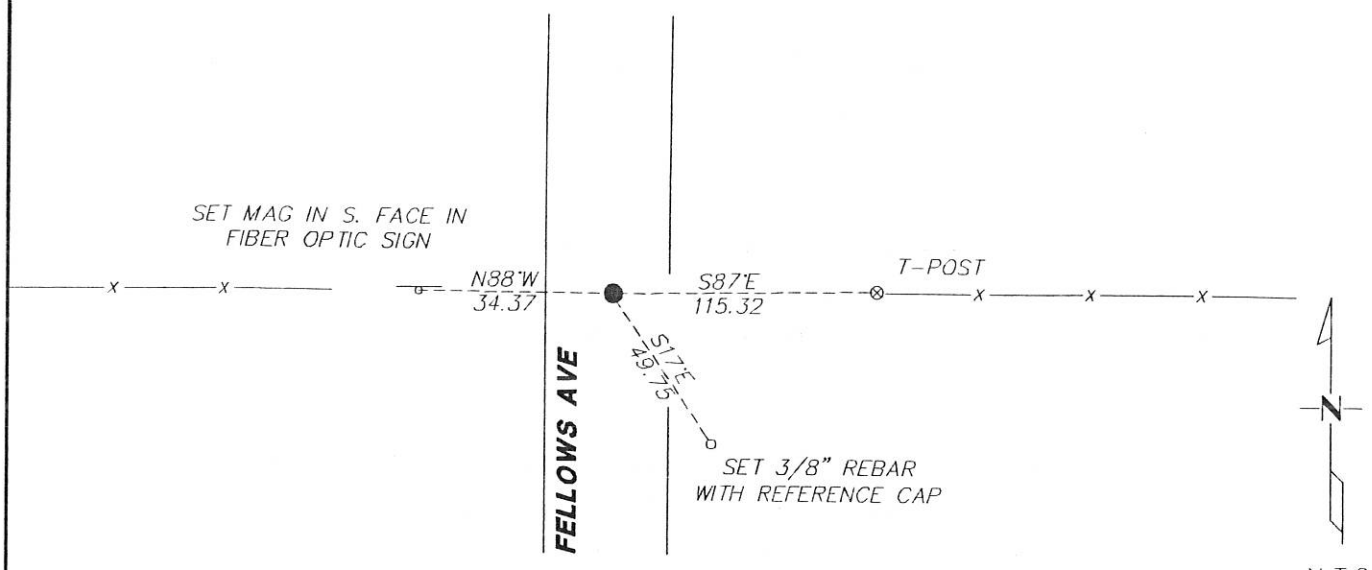
At the corner location shown on the sketch:

On 12/27/2017 found NO EVIDENCE.

left monument as found lowered monument removed monument (explain)

On 12/27/2017 placed a 1/2" REBAR CAPPED RLS 49563 0.4' DOWN AT LOST POSITION

SKETCH OF REFERENCE TIES



Statement of evidence for this corner location is on back of this page.

I hereby certify that this document was researched and prepared by me or under my direct supervision and that I am a licensed Land Surveyor under the laws of the State of Minnesota.

Signature Lynn M. Wilson

Date 2/7/18 License No. 49563

Title:

- Land Surveyor Professional Engineer
- County Surveyor County Engineer

DOCUMENT NUMBER A 357489
Certified, Filed and or Recorded on
March 06, 2018 11:45 AM

Lynn M. Wilson

NOBLES COUNTY RECORDER
LYNN M. WILSON
507-295-5268

Pages: 2

Statement of Evidence:

L-21

East Quarter Corner of Section 14, Township 104 North, Range 42 West, 5th Principal Meridian, Nobles County, Minnesota.

1868-Deputy Surveyor set a post in mound with pits

1836- Nobles County Highway Department "Corner Ties Book" calls for a stone to mark the corner location.

2006 - Ulteig Engineers set a 5/8" rebar capped 44563 midway and online between section corners, set ties, and filed a Certificate of Location doc. no. 311316

2017 - Westwood Professional Services did not recover any evidence of the corner. A 5/8" rebar capped LS 49563 was placed midway and online between section corners to mark the quarter corner. Ties were found or set as shown on the front of this certificate.

Analysis of the recovered data, field evidence and survey measurements, indicates that the monument found is the correct perpetuation of this corner. For additional information concerning this corner please contact Westwood Professional Services.

Kris Wroolie
5/1/18