

W1/4
Sec 14
104
42

CERTIFICATE OF LOCATION OF GOVERNMENT CORNER

EAST QUARTER Corner of Section 15, Township 104N, Range 42W

5th Principal Meridian, State of Minnesota, County of Nobles.

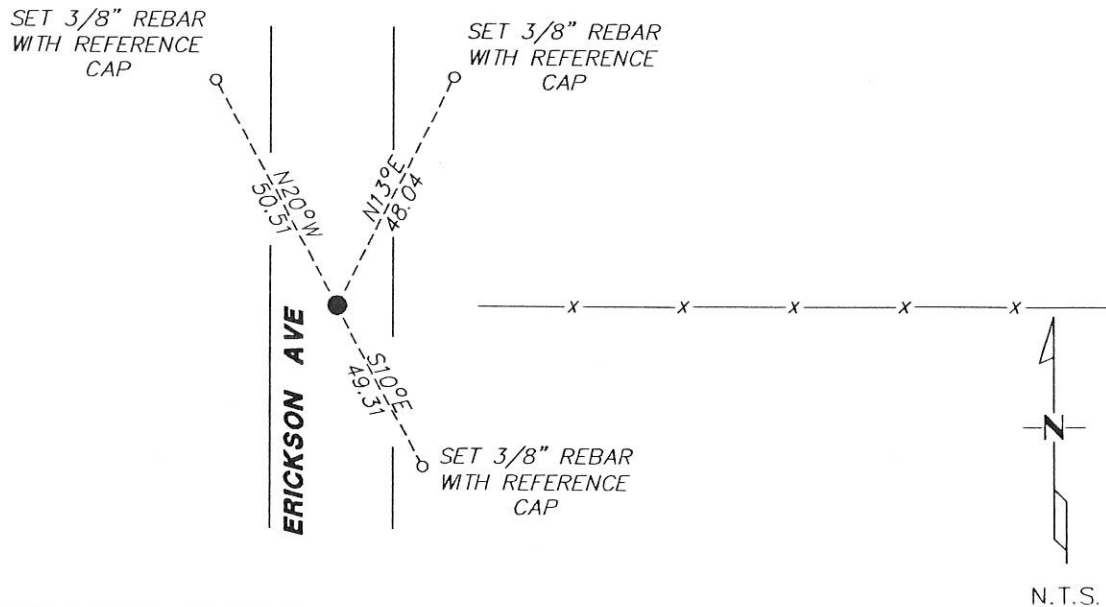
At the corner location shown on the sketch:

On 12/27/2017 found NOTHING.

left monument as found lowered monument removed monument (explain)

On 12/27/2017 placed a REBAR CAPPED LS 49563 0.4' DOWN.

SKETCH OF REFERENCE TIES



Statement of evidence for this corner location is on back of this page.

I hereby certify that this document was researched and prepared by me or under my direct supervision and that I am a licensed Land Surveyor under the laws of the State of Minnesota.

Signature LSW

Date 2/7/18 License No. 49563

Title:

- Land Surveyor Professional Engineer
- County Surveyor County Engineer

DOCUMENT NUMBER A 357492
Certified, Filed and or Recorded on
March 06, 2018 12:05 PM

Lynn Wilson

NOBLES COUNTY RECORDER
LYNN M. WILSON
507-295-5266

Statement of Evidence:

L-17

East Quarter Corner of Section 15, Township 104 North, Range 42 West, 5th Principal Meridian, Nobles County, Minnesota.

1868-Deputy Surveyor set a post in mound with pits

1912- Nobles County Highway Department "Corner Ties Book" calls for an iron pin was set to mark the corner location.

2006 - Ulteig Engineers set a 5/8" rebar with LS cap 44563 midway between section corners and on centerline, set ties, and file a Certificate of Location doc. no. 311317

2010 - Dakota Land Surveying and Engineering show a distance from this corner to the SE corner of Section 15 as 2644.92. It appears that a monument was not found. doc. no. 329281

2017- Westwood Professional Services did not recover the monument or ties from the 2006 Certificate of Location. Set 5/8" rebar capped LS 49563 midway and online between section corners. The lost position agrees with centerline and a fence line to the east.

Analysis of the recovered data, field evidence and survey measurements, indicates that the monument found is the correct perpetuation of this corner. For additional information concerning this corner please contact Westwood Professional Services.

W. W. W.
8/1/15