

W/14 sec 15 104 42

# CERTIFICATE OF LOCATION OF GOVERNMENT CORNER

EAST QUARTER Corner of Section 16, Township 104N, Range 42W

5th Principal Meridian, State of Minnesota, County of Nobles.

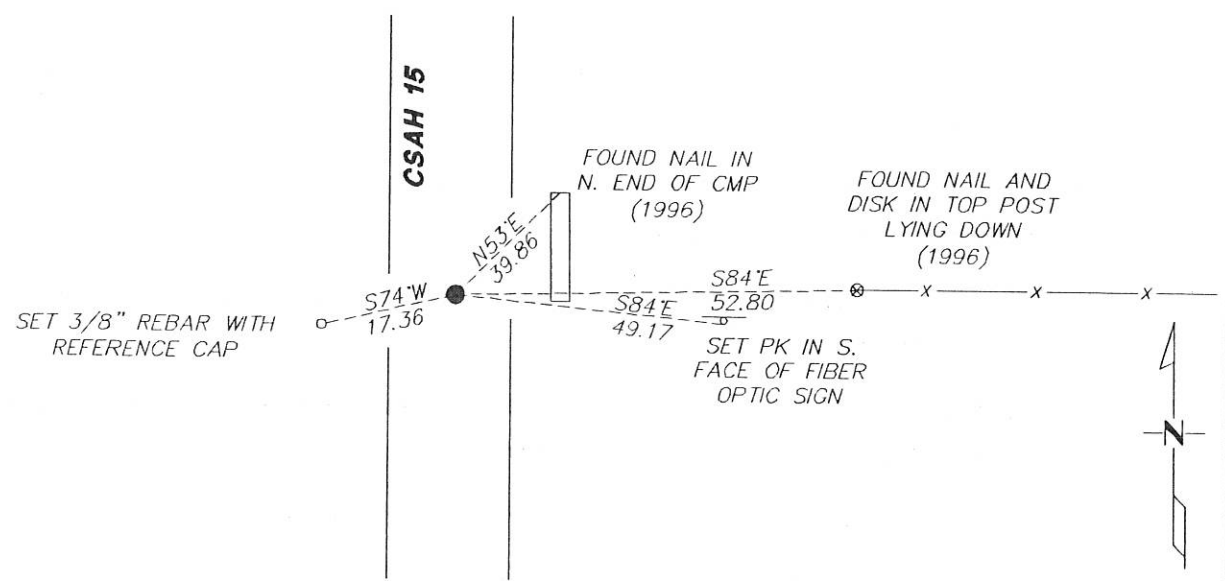
At the corner location shown on the sketch:

On 12/04/2017 found a PK NAIL OVER A 5/8" REBAR.

left monument as found     lowered monument     removed monument (explain)

On \_\_\_\_\_ placed a \_\_\_\_\_

### SKETCH OF REFERENCE TIES



Statement of evidence for this corner location is on back of this page.

I hereby certify that this document was researched and prepared by me or under my direct supervision and that I am a licensed Land Surveyor under the laws of the State of Minnesota.

Signature L.M. Wilson

Date 2/7/18 License No. 49563

Title:

- Land Surveyor     Professional Engineer
- County Surveyor     County Engineer

DOCUMENT NUMBER A 357499  
Certified, Filed and or Recorded on  
March 06, 2018 2:57 PM

*Lynn M. Wilson*

NOBLES COUNTY RECORDER  
LYNN M. WILSON  
507-295-5268

Pages: 2

**Statement of Evidence:**

L-13

East Quarter Corner of Section 16, Township 104 North, Range 42 West, 5<sup>th</sup> Principal Meridian, Nobles County, Minnesota.

1868-Deputy Surveyor set a post in mound with pits

1894- Nobles County Highway Department "Corner Ties Book" calls for a stone to mark the corner location.

1924- Nobles County Highway Department "Corner Ties Book" calls for a stone to mark the corner location.

1951- Nobles County Highway Department "Corner Ties Book" calls for a placed wood stake mark the corner location.

1962- Nobles County Highway Department "Corner Ties Book" calls for a stone and placed an iron pin to mark the corner location.

1980- Nobles County Highway Department "Corner Ties Book" calls for a stake and placed an iron pinto mark the corner location.

1996- Nobles County Highway Department "Corner Ties Book" calls for a placed iron pin and a placed 1 3/4" PK nail to mark the corner location.

2016 - Nobles County Highway Department set a PK nail after an overlay

2017- Westwood Professional Services recovered a PK nail over a 5/8" on centerline and a fence line to the east. Ties were found or set as shown on the front of this certificate.

Analysis of the recovered data, field evidence and survey measurements, indicates that the monument found is the correct perpetuation of this corner. For additional information concerning this corner please contact Westwood Professional Services.

*[Handwritten signature]*  
8/11/18