

COPY

W1/4  
SEC 16  
104 42

Index L-9

# CERTIFICATE OF LOCATION OF GOVERNMENT CORNER

EAST QUARTER Corner of Section 17, Township 104N, Range 42W

5th Principal Meridian, State of Minnesota, County of Nobles.

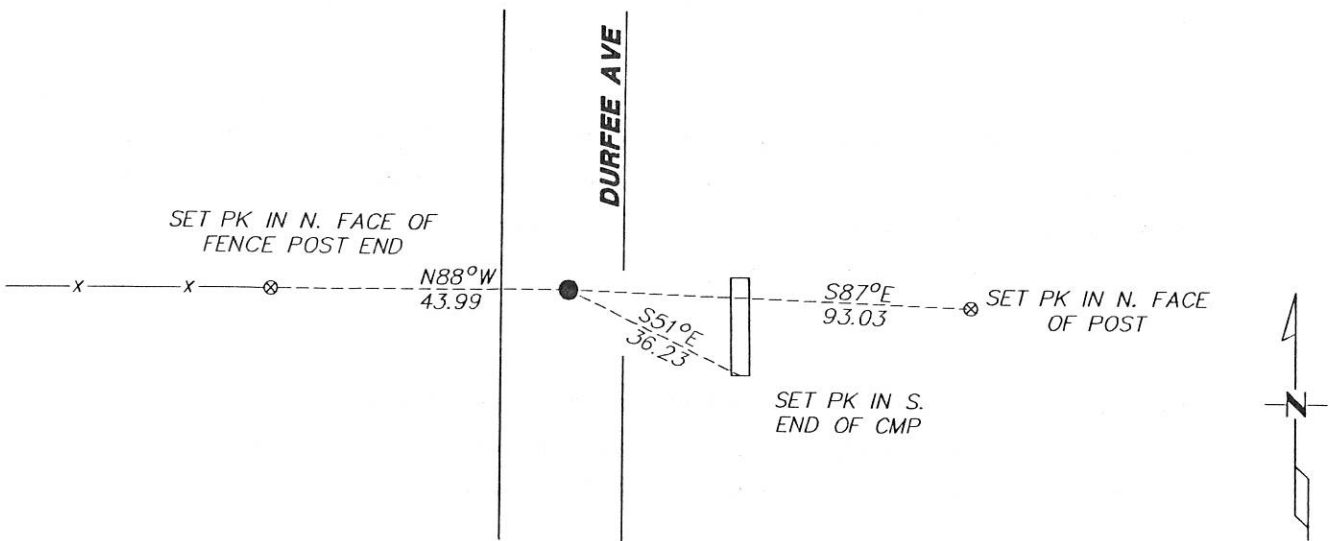
At the corner location shown on the sketch:

On 12/06/2017 found a 1/2" REBAR DOWN 0.4' WITH AN ILLEGIBLE CAP ON CENTERLINE AND ON  
DATE  
LINE WITH A FENCE RUNNING WEST.

left monument as found       lowered monument       removed monument (explain)

On \_\_\_\_\_ placed a \_\_\_\_\_  
DATE

## SKETCH OF REFERENCE TIES



Statement of evidence for this corner location is on back of this page.

I hereby certify that this document was researched and prepared by me or under my direct supervision and that I am a licensed Land Surveyor under the laws of the State of Minnesota.

Signature L.M. Wilson

Date 2/7/18 License No. 49563

Title:

- Land Surveyor       Professional Engineer
- County Surveyor       County Engineer

DOCUMENT NUMBER A 357500  
Certified, Filed and or Recorded on  
March 06, 2018 2:58 PM

Lynn M. Wilson

NOBLES COUNTY RECORDER  
LYNN M. WILSON  
507-295-5268

Pages: 2

**Statement of Evidence:**

L-9

East Quarter Corner of Section 17, Township 104 North, Range 42 West, 5<sup>th</sup> Principal Meridian, Nobles County, Minnesota.

1868-Deputy Surveyor set a post in mound with pits

1894- Nobles County Highway Department "Corner Ties Book" calls for a stake to mark the corner location.

2006 - Zieske Land Surveying shows this corner as an in place iron monument.

2017- Westwood Professional Services recovered a rebar with an illegible cap on centerline and a fence line west. The monument agrees with distances to adjacent section corners from the 2006 Zieske survey. Accepting as the best available evidence for the corner. Ties were found or set as shown on the front of this certificate.

Analysis of the recovered data, field evidence and survey measurements, indicates that the monument found is the correct perpetuation of this corner. For additional information concerning this corner please contact Westwood Professional Services.

*[Handwritten signature]*  
8/1/15