

25

W/4 Sec 21 104 42

COPY

# CERTIFICATE OF LOCATION OF GOVERNMENT CORNER

EAST QUARTER Corner of Section 20, Township 104N, Range 42W

5th Principal Meridian, State of Minnesota, County of Nobles.

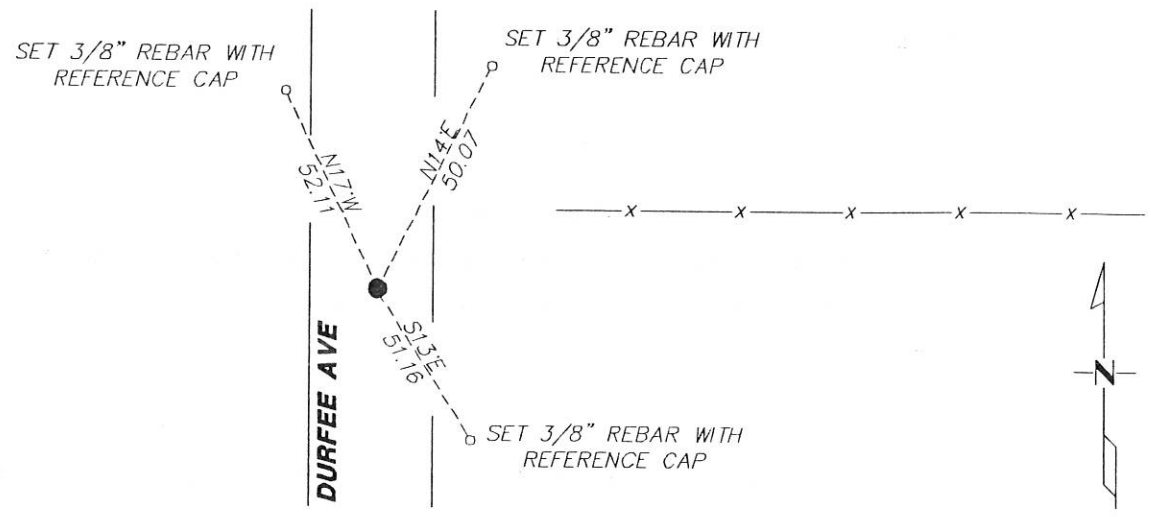
At the corner location shown on the sketch:

On 11/29/2017 found NOTHING.  
DATE

left monument as found     lowered monument     removed monument (explain)

On 12/27/2017 placed a 1/2" REBAR CAPPED LS 49563 DOWN 0.4' MIDWAY AND ONLINE.  
DATE  
BETWEEN SECTION CORNERS.

### SKETCH OF REFERENCE TIES



Statement of evidence for this corner location is on back of this page.

I hereby certify that this document was researched and prepared by me or under my direct supervision and that I am a licensed Land Surveyor under the laws of the State of Minnesota.

Signature Lynn M. Wilson

Date 2/7/18 License No. 49563

Title:

- Land Surveyor     Professional Engineer
- County Surveyor     County Engineer

DOCUMENT NUMBER A 357505  
Certified, Filed and or Recorded on  
March 06, 2018 3:03 PM

Lynn M. Wilson

NOBLES COUNTY RECORDER  
LYNN M. WILSON  
507-295-5268

KRIS WROOLIE  
Minnesota License No. 49563

**Statement of Evidence:**

P-9

East Quarter Corner of Section 20, Township 104 North, Range 42 West, 5<sup>th</sup> Principal Meridian, Nobles County, Minnesota.

1868-Deputy Surveyor set a post in mound with pits

1901- Nobles County Highway Department "Corner Ties Book" calls for a stone to mark the corner location.

1902- Nobles County Highway Department "Corner Ties Book" calls for a stone to mark the corner location.

2017- Westwood Professional Services located a north-south road centerline. No other evidence of the corner was recovered. A 5/8" rebar capped LS 49563 was placed midway and online between section corners to mark the quarter corner. Ties were set as shown on the front of this certificate.

Analysis of the recovered data, field evidence and survey measurements, indicates that the monument found is the correct perpetuation of this corner. For additional information concerning this corner please contact Westwood Professional Services.

*Handwritten signature and date:*  
Kris Wroolie  
8/1/18