

W/M
Sec 22
104
42

COPY

Index P-13

CERTIFICATE OF LOCATION OF GOVERNMENT CORNER

EAST QUARTER Corner of Section 21, Township 104N, Range 42W

5th Principal Meridian, State of Minnesota, County of Nobles.

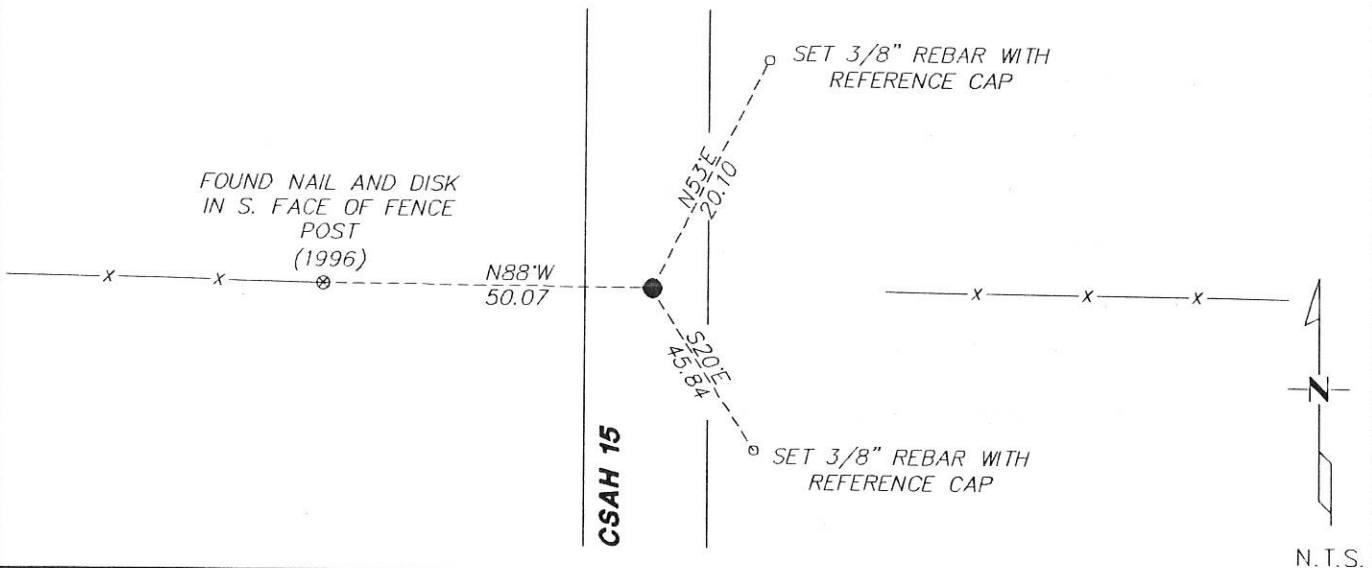
At the corner location shown on the sketch:

On 11/29/2017 found a 5/8" REBAR DOWN 0.3' ON CENTERLINE OF THE ROAD.
DATE

left monument as found lowered monument removed monument (explain)

On _____ placed a _____
DATE

SKETCH OF REFERENCE TIES



Statement of evidence for this corner location is on back of this page.

I hereby certify that this document was researched and prepared by me or under my direct supervision and that I am a licensed Land Surveyor under the laws of the State of Minnesota.

Signature *Lynn M. Wilson*

Date 2/7/18 License No. 49563

Title:

Land Surveyor Professional Engineer

County Surveyor County Engineer

DOCUMENT NUMBER A 357508
Certified, Filed and or Recorded on
March 06, 2018 3:06 PM

Lynn M. Wilson

NOBLES COUNTY RECORDER
LYNN M. WILSON
507-295-5268

Pages: 2

Statement of Evidence:

P-13

East Quarter Corner of Section 21, Township 104 North, Range 42 West, 5th Principal Meridian, Nobles County, Minnesota.

1868-Deputy Surveyor set a post in mound with pits

1901- Nobles County Highway Department "Corner Ties Book" calls for a stone to mark the corner location.

1924- Nobles County Highway Department "Corner Ties Book" calls for a stone to mark the corner location.

1951- Nobles County Highway Department "Corner Ties Book" calls for a stone to mark the corner location.

1964- Nobles County Highway Department "Corner Ties Book" calls for a stone and placed an iron pin to mark the corner location.

1980- Nobles County Highway Department "Corner Ties Book" calls for an iron pin to mark the corner location.

1996- Nobles County Highway Department "Corner Ties Book" calls for a placed iron pin and a placed 1 3/4" PK nail to mark the corner location.

2016 - Nobles County Highway Department set a PK nail after an overlay

2017- Westwood Professional Services recovered a 5/8" rebar on centerline and fence lines east and west, and 1 tie from 1996. Ties were found or set as shown on the front of this certificate.

Analysis of the recovered data, field evidence and survey measurements, indicates that the monument found is the correct perpetuation of this corner. For additional information concerning this corner please contact Westwood Professional Services.



Handwritten signature and date: *[Signature]*
8/1/17