

W/4
Sec 27
104
42

CERTIFICATE OF LOCATION OF GOVERNMENT CORNER

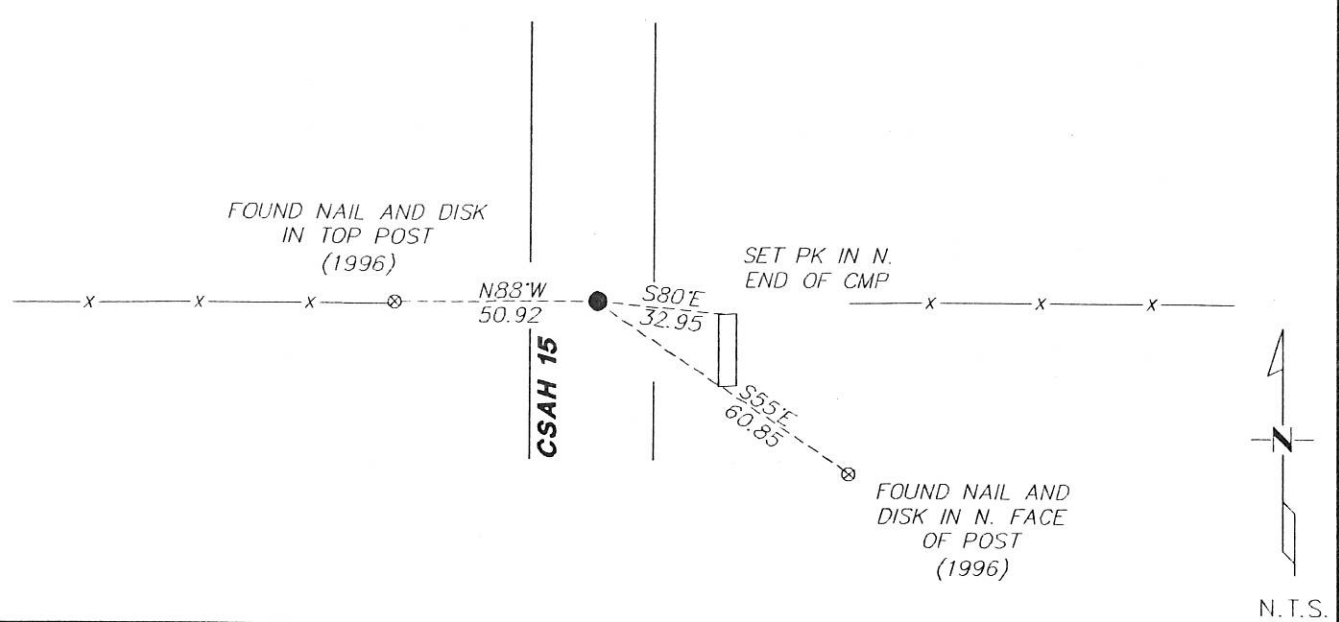
EAST QUARTER Corner of Section 28, Township 104N, Range 42W

5th Principal Meridian, State of Minnesota, County of Nobles.

At the corner location shown on the sketch:

- On 11/29/2017 found a PK NAIL ON CENTERLINE AND WITH FENCES RUNNING EAST AND WEST.
- left monument as found lowered monument removed monument (explain)
- On _____ placed a _____

SKETCH OF REFERENCE TIES



Statement of evidence for this corner location is on back of this page.

I hereby certify that this document was researched and prepared by me or under my direct supervision and that I am a licensed Land Surveyor under the laws of the State of Minnesota.

Signature *TJWL*

Date 2/7/18 License No. 49563

Title:

- Land Surveyor Professional Engineer
- County Surveyor County Engineer

DOCUMENT NUMBER A 357523
Certified, Filed and or Recorded on
March 07, 2018 8:50 AM

Lynn Wilson

NOBLES COUNTY RECORDER
LYNN M. WILSON
507-295-5268

Pages: 2

Statement of Evidence:

T-13

East Quarter Corner of Section 28, Township 104 North, Range 42 West, 5th Principal Meridian, Nobles County, Minnesota.

1868-T.B. Walker set a post in mound with pits for the section corner.

1902- Nobles County Highway Department "Corner Ties Book" calls for a set stone to mark the corner location.

1938- Nobles County Highway Department "Corner Ties Book" calls for a stone to mark the corner location.

1951- Nobles County Highway Department "Corner Ties Book" calls for an iron pin to mark the corner location.

1963- Nobles County Highway Department "Corner Ties Book" calls for an iron pin to mark the corner location.

1980- Nobles County Highway Department "Corner Ties Book" calls for an iron pin to mark the corner location.

1996- Nobles County Highway Department "Corner Ties Book" calls for a placed iron pin after paving to mark the corner location.

2016- Nobles County Highway Department "Corner Ties Book" calls for a placed PK after an overlay to mark the corner location.

2017- Westwood Professional Services recovered a PK nail with a magnetic indication under it and county ties from 1996. Ties were found or set as shown on the front of this certificate.

Analysis of the recovered data, field evidence and survey measurements, indicates that the monument found is the correct perpetuation of this corner. For additional information concerning this corner please contact Westwood Professional Services.

[Handwritten signature]
2/1/17