

W1/4
Sec 28
104
42

COPY

Index T-9

CERTIFICATE OF LOCATION OF GOVERNMENT CORNER

EAST QUARTER _____ Corner of Section 29, Township 104N, Range 42W

5th Principal Meridian, State of Minnesota, County of Nobles.

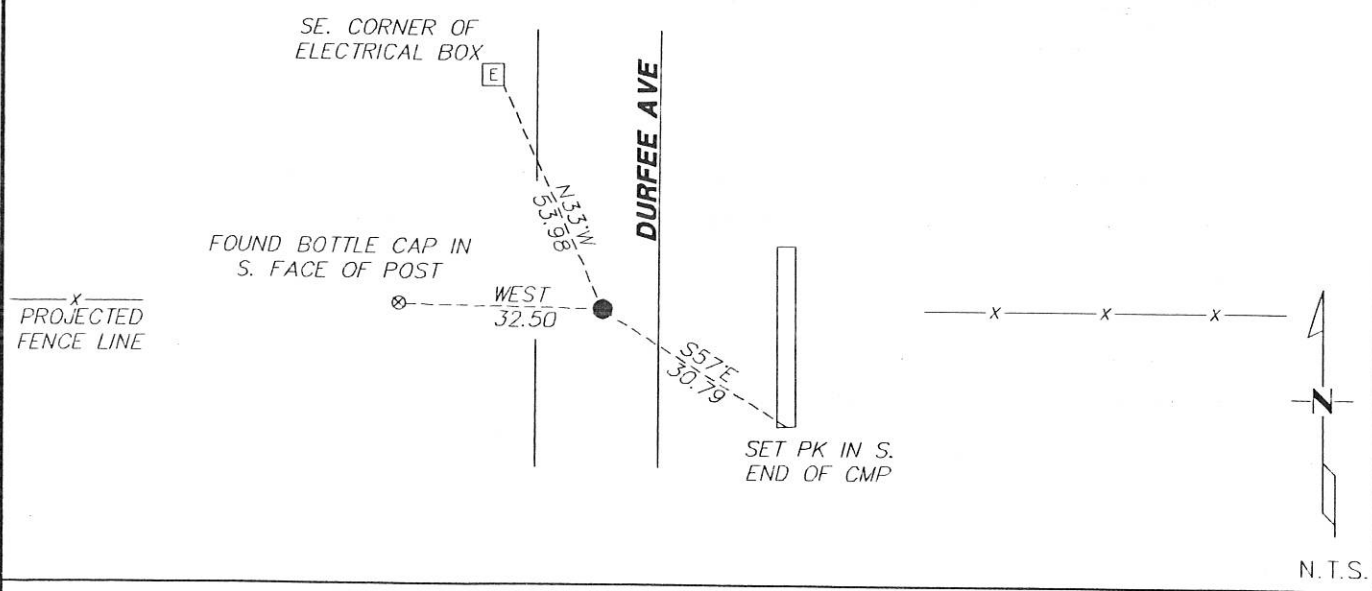
At the corner location shown on the sketch:

On 12/04/2017 found a 3/4" PIPE DOWN 0.8' ON CENTERLINE AND FENCE LINES EAST AND WEST.
DATE

left monument as found lowered monument removed monument (explain)

On _____ placed a _____
DATE

SKETCH OF REFERENCE TIES



Statement of evidence for this corner location is on back of this page.

I hereby certify that this document was researched and prepared by me or under my direct supervision and that I am a licensed Land Surveyor under the laws of the State of Minnesota.

Signature L.M. Wilson

Date 2/7/18 License No. 49563

Title:

- Land Surveyor Professional Engineer
- County Surveyor County Engineer

DOCUMENT NUMBER A 357528
Certified, Filed and or Recorded on
March 07, 2018 9:15 AM

Lynn Wilson

NOBLES COUNTY RECORDER
LYNN M. WILSON
507-295-5268

Pages: 2

Statement of Evidence:

T-9

East Quarter Corner of Section 29, Township 104 North, Range 42 West, 5th Principal Meridian, Nobles County, Minnesota.

1868-T.B. Walker set a post in mound with pits for the section corner.

1937- Nobles County Highway Department "Corner Ties Book" calls for a stake to mark the corner location.

1997- Madsen Surveying did not recover a monument and set a 3/4" pipe in line with fence west and on centerline and set ties.

2017- Westwood Professional Services recovered a 3/4" pipe on centerline and fence lines east and west and tie from 1997. Ties were found or set as shown on the front of this certificate.

Analysis of the recovered data, field evidence and survey measurements, indicates that the monument found is the correct perpetuation of this corner. For additional information concerning this corner please contact Westwood Professional Services.

[Handwritten signature and date]
5/11/18