

225  
W 1/4  
Sec 32  
104  
42

COPY

Index X-5

# CERTIFICATE OF LOCATION OF GOVERNMENT CORNER

EAST QUARTER Corner of Section 31, Township 104N, Range 42W

5th Principal Meridian, State of Minnesota, County of Nobles.

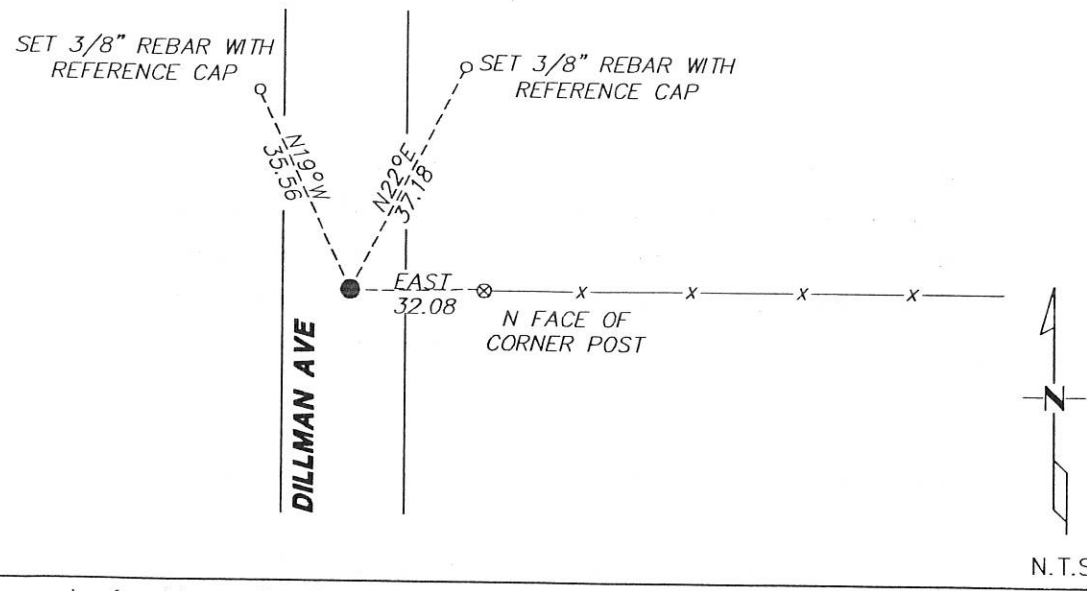
At the corner location shown on the sketch:

On 12/07/2017 found a NOTHING.  
DATE

left monument as found       lowered monument       removed monument (explain)

On 12/27/2017 placed a 1/2" REBAR CAPPED LS 49563 DOWN 0.4' ON CENTERLINE AND FENCE  
DATE RUNNING EAST.

## SKETCH OF REFERENCE TIES



Statement of evidence for this corner location is on back of this page.

I hereby certify that this document was researched and prepared by me or under my direct supervision and that I am a licensed Land Surveyor under the laws of the State of Minnesota.

Signature L.M. Wilson

Date 2/7/18 License No. 49563

Title:

- Land Surveyor       Professional Engineer
- County Surveyor       County Engineer

DOCUMENT NUMBER A 357532  
Certified, Filed and or Recorded on  
March 07, 2018 9:35 AM

*Lynn Wilson*

NOBLES COUNTY RECORDER  
LYNN M. WILSON  
507-295-5268

Pages: 2

**Statement of Evidence:**

X-5

East Quarter Corner of Section 31, Township 104 North, Range 42 West, 5<sup>th</sup> Principal Meridian, Nobles County, Minnesota.

1868-T.B. Walker set a post in mound with pits for the section corner.

1910- Nobles County Highway Department "Corner Ties Book" calls for a stone to mark the corner location.

1934- Nobles County Highway Department "Corner Ties Book" calls for a stone to mark the corner location.

2017- Westwood Professional Services located a north/south centerline and a fence line to the east. This long standing occupation agrees closely with the proportional position between adjacent section corners and is accepted as the best available evidence for the corner. A 5/8" rebar capped 49563 was placed on centerline and the fence line to the east to mark the corner. Ties were set as shown on the front of this certificate.

Analysis of the recovered data, field evidence and survey measurements, indicates that the monument found is the correct perpetuation of this corner. For additional information concerning this corner please contact Westwood Professional Services.

*[Handwritten signature]*  
3/1/15