

W/4  
Sec 33  
104  
42

COPY

Index X-9

# CERTIFICATE OF LOCATION OF GOVERNMENT CORNER

EAST QUARTER \_\_\_\_\_ Corner of Section 32, Township 104N, Range 42W

5th Principal Meridian, State of Minnesota, County of Nobles.

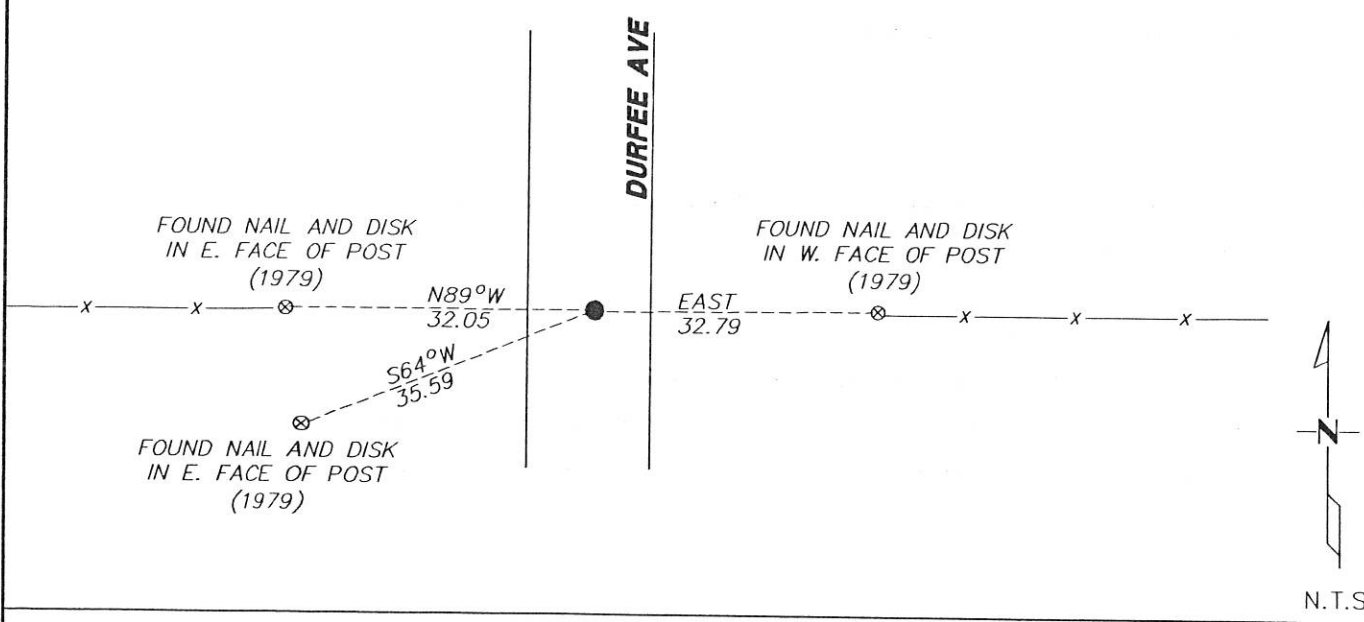
At the corner location shown on the sketch:

On 12/06/2017 found a 12" SPIKE DOWN 0.2' ON CENTERLINE AND FENCES RUNNING EAST AND WEST.  
DATE

left monument as found       lowered monument       removed monument (explain)

On \_\_\_\_\_ placed a \_\_\_\_\_  
DATE

## SKETCH OF REFERENCE TIES



Statement of evidence for this corner location is on back of this page.

I hereby certify that this document was researched and prepared by me or under my direct supervision and that I am a licensed Land Surveyor under the laws of the State of Minnesota.

Signature [Handwritten Signature]

Date 2/7/18 License No. 49563

Title:

- Land Surveyor       Professional Engineer
- County Surveyor       County Engineer

DOCUMENT NUMBER A 357935  
Certified, Filed and or Recorded on  
March 07, 2018 9:50 AM

[Handwritten Signature]

NOBLES COUNTY RECORDER  
LYNN M. WILSON  
507-295-5268

Pages: 2

**Statement of Evidence:**

X-9

East Quarter Corner of Section 32, Township 104 North, Range 42 West, 5<sup>th</sup> Principal Meridian, Nobles County, Minnesota.

1868-T.B. Walker set a post in mound with pits for the section corner.

1902- Nobles County Highway Department "Corner Ties Book" calls for a stone to mark the corner location.

1941- Nobles County Highway Department "Corner Ties Book" calls for a stone to mark the corner location.

1979- Nobles County Highway Department "Corner Ties Book" calls for a stone and a placed bridge pin to mark the corner location.

2017- Westwood Professional Services recovered a 12" spike (with nothing under) on centerline and fences east and west that agrees closely to the 1902 survey distances to adjacent section corners. Replace found spike with a rebar capped LS 49563. Ties were found or set as shown on the front of this certificate.

Analysis of the recovered data, field evidence and survey measurements, indicates that the monument found is the correct perpetuation of this corner. For additional information concerning this corner please contact Westwood Professional Services.

*[Handwritten signature]*  
8/1/15