

W/4  
Sec 36  
104  
42

### CERTIFICATE OF LOCATION OF GOVERNMENT CORNER

EAST QUARTER \_\_\_\_\_ Corner of Section 35, Township 104N, Range 42W

5th Principal Meridian, State of Minnesota, County of Nobles.

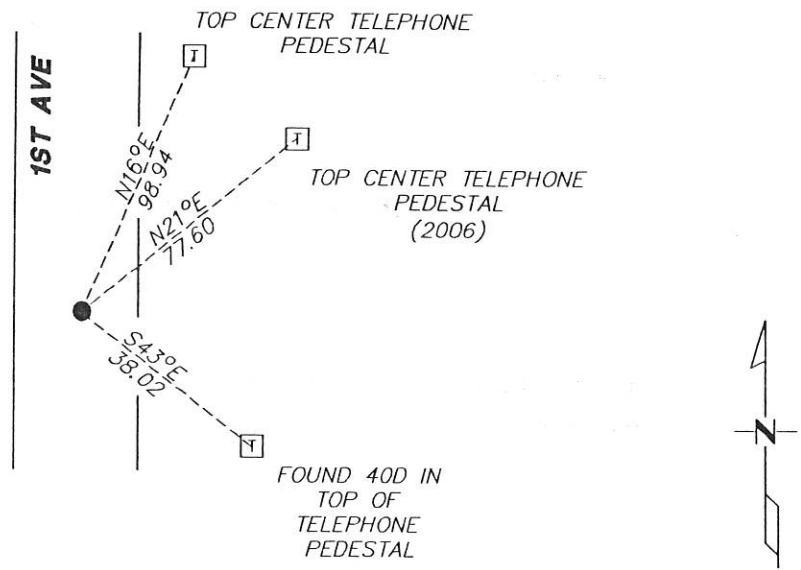
At the corner location shown on the sketch:

On 11/30/2017 found a 5/8" REBAR WITH A 40D NAIL ABOVE IT ON ROAD SURFACE CENTERLINE.  
DATE

left monument as found       lowered monument       removed monument (explain)

On \_\_\_\_\_ placed a \_\_\_\_\_  
DATE

#### SKETCH OF REFERENCE TIES



Statement of evidence for this corner location is on back of this page.

I hereby certify that this document was researched and prepared by me or under my direct supervision and that I am a licensed Land Surveyor under the laws of the State of Minnesota.

Signature TSWLD.

Date 2/7/18 License No. 49563

Title:

- Land Surveyor       Professional Engineer
- County Surveyor       County Engineer

DOCUMENT NUMBER A 357541  
Certified, Filed and or Recorded on  
March 07, 2018 10:20 AM

*Lynn M. Wilson*

NOBLES COUNTY RECORDER  
LYNN M. WILSON  
507-295-5266

Pages: 2

**Statement of Evidence:**

X-21

East Quarter Corner of Section 35, Township 104 North, Range 42 West, 5<sup>th</sup> Principal Meridian, Nobles County, Minnesota.

1868-T.B. Walker set a post in mound with pits for the section corner

1901- Nobles County Highway Department "Corner Ties Book" calls for a stone to mark the corner location.

1911- Nobles County Highway Department "Corner Ties Book" calls for a set iron pin to mark the corner location.

1912- Nobles County Highway Department "Corner Ties Book" calls for a iron pin to mark the corner location.

1968- Nobles County Highway Department "Corner Ties Book" calls for a stone to mark the corner location.

2006 - Ulteig Engineers found a 5/8" rebar in the road centerline, set ties, and filed a Certificate of Location (no document number)

2017- Westwood Professional Services recovered a 5/8" rebar in the road centerline and one tie from the 2006 Certificate. Ties were found or set as shown on the front of this certificate

Analysis of the recovered data, field evidence and survey measurements, indicates that the monument found is the correct perpetuation of this corner. For additional information concerning this corner please contact Westwood Professional Services.

3/1/15