

W/4
Sec 4
104 42

CERTIFICATE OF LOCATION OF GOVERNMENT CORNER

EAST QUARTER Corner of Section 5, Township 104N, Range 42W

5th Principal Meridian, State of Minnesota, County of Nobles.

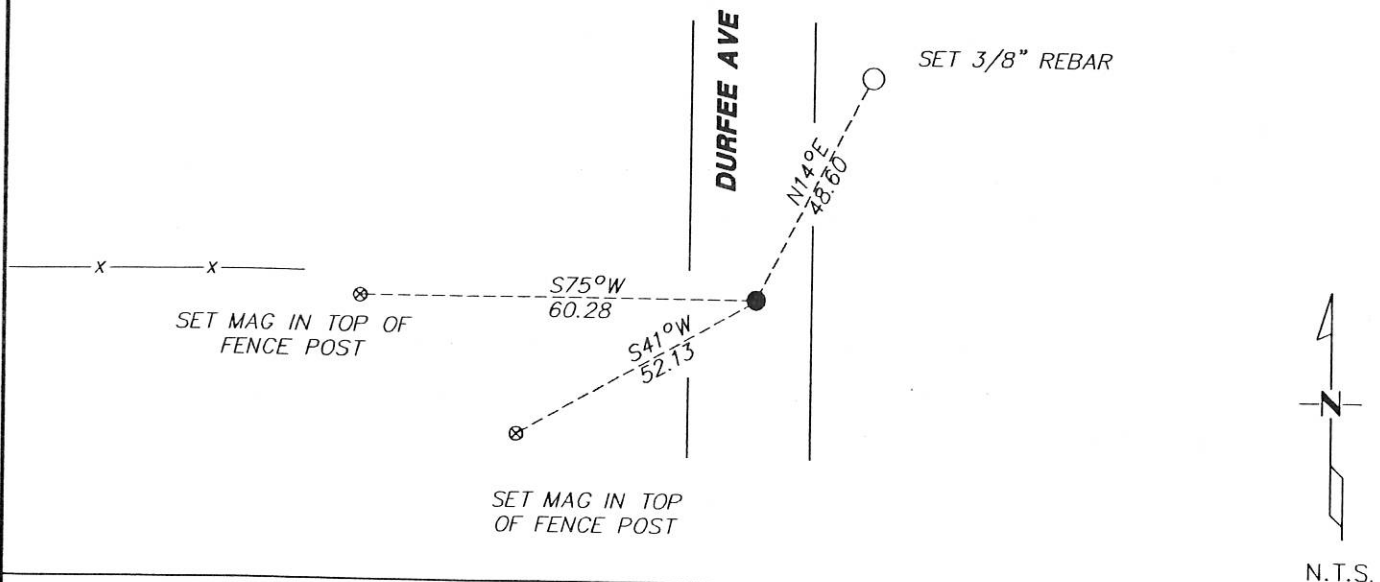
At the corner location shown on the sketch:

On 11/28/2017 found a 1/2" REBAR DOWN 0.7 FEET, AND ON CENTERLINE AND FENCE LINE WEST.
DATE

left monument as found lowered monument removed monument (explain)

On _____ placed a _____
DATE

SKETCH OF REFERENCE TIES



Statement of evidence for this corner location is on back of this page.

I hereby certify that this document was researched and prepared by me or under my direct supervision and that I am a licensed Land Surveyor under the laws of the State of Minnesota.

Signature Lynn M. Wilson

Date 2/7/18 License No. 49563

Title:

- Land Surveyor Professional Engineer
- County Surveyor County Engineer

DOCUMENT NUMBER A 357478
Certified, Filed and/or Recorded on
March 06 2018 10:50 AM

Lynn M. Wilson

NOBLES COUNTY RECORDER
LYNN M. WILSON
507-295-5288

KRIS WROOLIE
Minnesota License No. 49563

Statement of Evidence:

C-9

East Quarter Corner of Section 5, Township 104 North, Range 42 West, 5th Principal Meridian, Nobles County, Minnesota.

1868-Deputy Surveyor set a post in mound with pits.

1979 - Nobles County Highway Department "Corner Ties Book" calls that nothing was found and a bridge pin was placed for the corner

2006 - Ulteig Engineers found a #4 rebar on the road centerline and a fence line to the west, set ties, and file a Certificate of Location doc. no. 311303

2017- Westwood Professional Services recovered a #4 rebar in the on centerline and a fence line to the west. Ties were found or set as shown on the front of this certificate

Analysis of the recovered data, field evidence and survey measurements, indicates that the monument found is the correct perpetuation of this corner. For additional information concerning this corner please contact Westwood Professional Services.

EW
8/1/17