

W 1/4
Sec 9

104 42

CERTIFICATE OF LOCATION OF GOVERNMENT CORNER

EAST QUARTER _____ Corner of Section 8, Township 104N, Range 42W

5th Principal Meridian, State of Minnesota, County of Nobles.

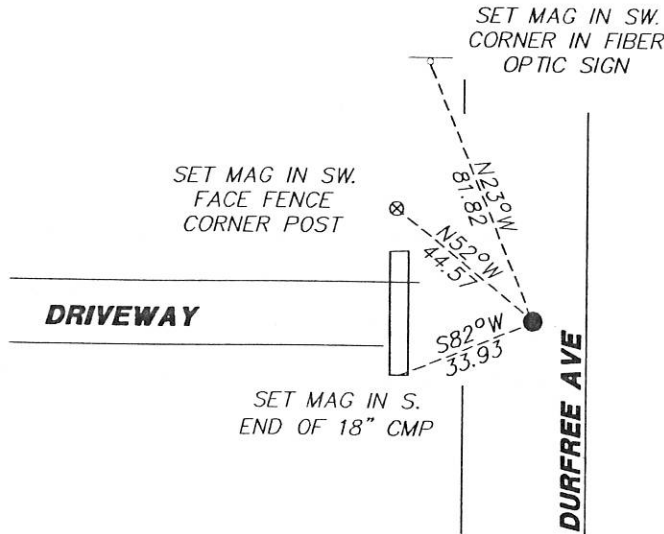
At the corner location shown on the sketch:

On 12/06/2017 found a NOTHING.
DATE

left monument as found lowered monument removed monument (explain)

On 12/27/2017 placed a 1/2" REBAR CAPPED 49563 0.4' DOWN AT PROPORTIONED DISTANCE USING
DATE NOTES FROM 1900 RESURVEY.

SKETCH OF REFERENCE TIES



N.T.S.

Statement of evidence for this corner location is on back of this page.

I hereby certify that this document was researched and prepared by me or under my direct supervision and that I am a licensed Land Surveyor under the laws of the State of Minnesota.

Signature Lynn M. Wilson

Date 2/7/18 License No. 49563

Title:

- Land Surveyor Professional Engineer
- County Surveyor County Engineer

DOCUMENT NUMBER A 357479
Certified, Filed and/or Recorded on
March 06 2018 10:55 AM

Lynn M. Wilson

NOBLES COUNTY RECORDER
LYNN M. WILSON
507-295-5288

Statement of Evidence:

G-9

East Quarter Corner of Section 8, Township 104 North, Range 42 West, 5th Principal Meridian, Nobles County, Minnesota.

1868-Deputy Surveyor set a post in mound with pits.

1900- Nobles County Highway Department "Corner Ties Book" calls for a stone to mark the corner location.

1938 - Nobles County Highway Department "Corner Ties Book" calls for a stone to mark the corner location

2017- Westwood Professional Services located centerline of a north-south road. No additional evidence was recovered for the corner. A 5/8" rebar capped LS 49563 was place online between section corners and proportioned using distances from the 1900 survey. This position agrees closely with centerline and occupation lines to the east and west. Ties were set as shown on the front of this certificate.

Analysis of the recovered data, field evidence and survey measurements, indicates that the monument found is the correct perpetuation of this corner. For additional information concerning this corner please contact Westwood Professional Services.

[Handwritten signature]
2/1/15