

CERTIFICATE OF LOCATION OF GOVERNMENT CORNER

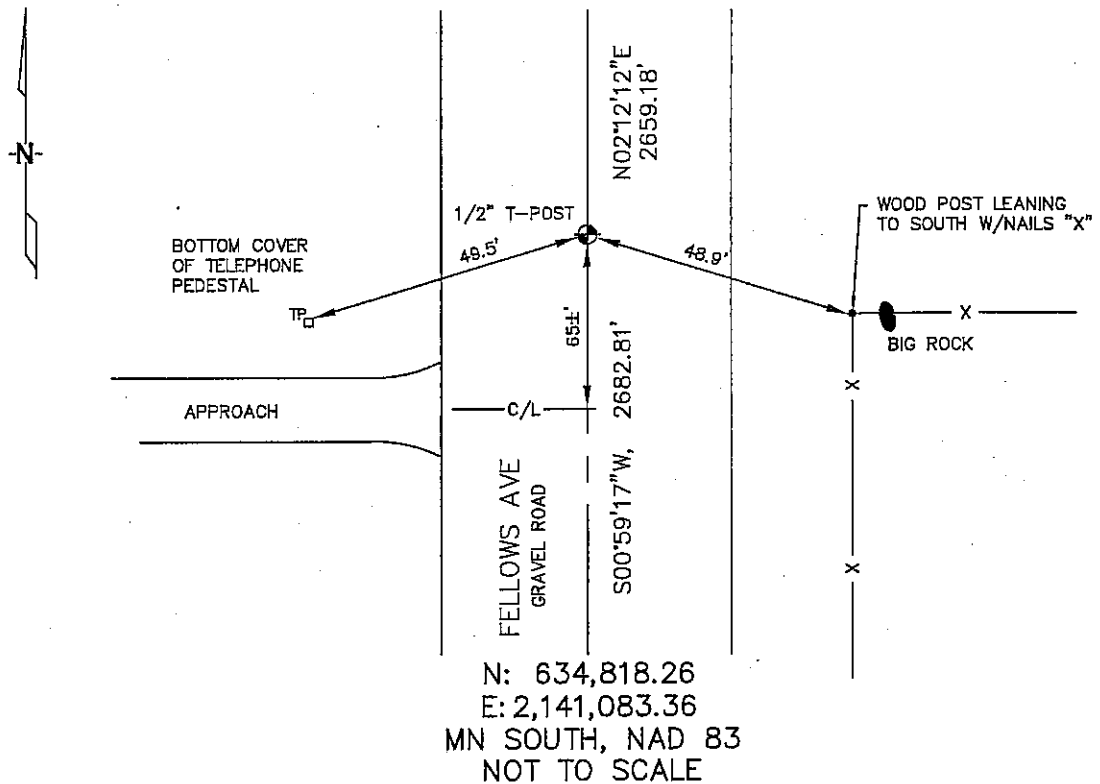
EAST 1/4 Corner of Section 11, Township 104, Range 42, 5TH P.M.

STATE OF MINNESOTA, County of NOBLES

At the corner location shown on the sketch :

- On 2/23/2006 found A 1/2" T-POST, IN THE C/L OF THE GRAVEL ROAD, 65'± NORTH FROM THE C/L OF A FIELD APPROACH.
 - left monument as found, lowered monument, removed monument (explain)
- On _____ set _____

Sketch of reference ties



Statement of evidence relative to this corner location is on back page

I hereby certify that this document and the data contained herein was prepared by me or under my direct supervision.

Thomas V. [Signature] 7/6/06
 Thomas V. [Name] Date

- Registration No. 44563
- Land Surveyor, Professional Engineer
 - County Surveyor, County Engineer

OFFICE OF THE COUNTY RECORDER
 County of _____

I hereby certify that this document was filed in the Co. Recorders office at _____ M. on the _____ day of _____ A.D. , 20

County Recorder _____
 By _____, Deputy

DOCUMENT NO. _____

STATEMENT OF EVIDENCE:

EAST 1/4 CORNER, SECTION 11, T. 104 N., R. 42 W.,
NOBLES COUNTY, MINNESOTA

1868 Jewett & Howe, US. Deputy Surveyors, monumented corner.

2/23/2006 Ulteig Engineers, Inc., Survey Crew, Brian Payne, Party Chief, found a 1/2" t-post in the C/L of the road, 65'± north from the C/L of a field approach.

Ties: N-2659.18' to NE corner, Section 11;

S-2682.81' to SE corner, Section 11.

SE-48.9' to a nailed "X" on a south leaning wood corner fence post, next to a big rock;

SW-49.5' to the bottom cover of a telephone pedestal.