

CERTIFICATE OF LOCATION OF GOVERNMENT CORNER

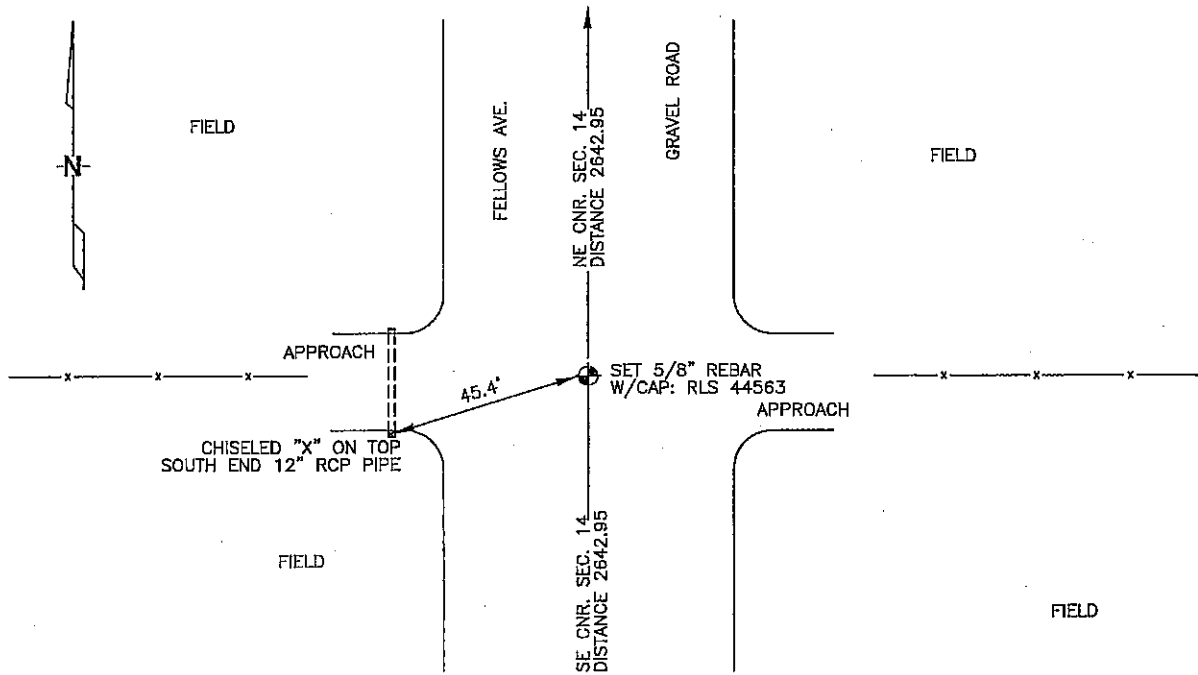
EAST 1/4 Corner of Section 14, Township 104, Range 42, 5TH P.M.

STATE OF MINNESOTA, County of NOBLES

At the corner location shown on the sketch :

- On _____ found _____
- left monument as found, lowered monument, removed monument (explain)
- On 3/9/2006 set 5/8" capped Rebar, RLS: 44563

Sketch of reference ties



N: 629,493.42
E: 2,140,984.64

MN SOUTH ZONE, NAD 83

Statement of evidence relative to this corner location is on back page

I hereby certify that this document and the data contained herein was prepared by me or under my direct supervision.

Thomas V. Zeff Signature 5/1/06 Date

Registration No. 49563

- Land Surveyor, Professional Engineer
- County Surveyor, County Engineer

OFFICE OF THE COUNTY RECORDER

County of _____

I hereby certify that this document was filed in the Co. Recorders office at _____ .M. on the _____ day of _____ A.D. , 20

County Recorder _____
By _____, Deputy

DOCUMENT NO. _____

STATEMENT OF EVIDENCE:

EAST 1/4 CORNER, SECTION 14, T. 104 N., R. 42 W.,
NOBLES COUNTY, MINNESOTA

1868

JEWETT & HOWE, U.S. DEPUTY SURVEYORS
SUBDIVIDED TOWNSHIP INTO SECTIONS.

1936

STONE SET ON CORNER, NO TIES.

3/9/2006

ULTEIG ENGINEERING, SURVEY CREW
BRIAN PAYNE PARTY CHIEF, FOUND NOTHING.
SET 5/8" REBAR W/ CAP: RLS 44563 IN
GRAVEL ROAD.

TIES: N - 2642.95' TO NE CORNER,
S - 2642.95' TO SE CORNER,
SW - 45.4' TO 'X' MARK CHISELED INTO
TOP OF S. END OF 12" R.C.P.