

# CERTIFICATE OF LOCATION OF GOVERNMENT CORNER

EAST 1/4 Corner of Section 2, Township 104, Range 42, 5TH P.M.

STATE OF MINNESOTA, County of NOBLES

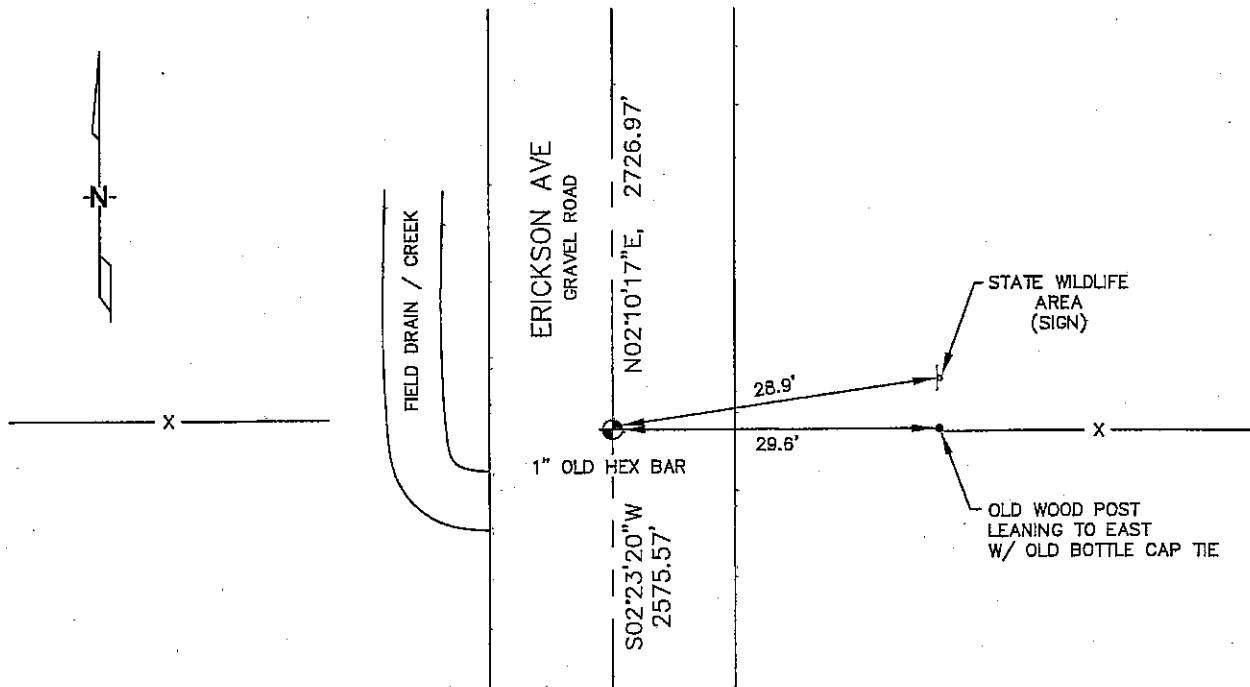
At the corner location shown on the sketch :

On 1/06/2006 found OLD 1" HEXAGON SHAPED BAR IN C/L OF ROAD, OPPOSITE FENCE LINES RUNNING EAST & WEST.

left monument as found,  lowered monument,  removed monument (explain)

On \_\_\_\_\_ set \_\_\_\_\_

Sketch of reference ties



N: 640,048.81  
E: 2,141,292.95  
MN SOUTH, NAD 83  
NOT TO SCALE

Statement of evidence relative to this corner location is on back page

A11

I hereby certify that this document and the data contained herein was prepared by me or under my direct supervision.

Thomas V. Zeff  
Thomas V. Zeff  
Date 7/7/06

Registration No. 44563

- Land Surveyor,  Professional Engineer
- County Surveyor,  County Engineer

## OFFICE OF THE COUNTY RECORDER

County of \_\_\_\_\_

I hereby certify that this document was filed in the Co. Recorders office at \_\_\_\_\_ .M. on the day of \_\_\_\_\_ A.D. , 20

County Recorder \_\_\_\_\_

By \_\_\_\_\_, Deputy

DOCUMENT NO. \_\_\_\_\_

STATEMENT OF EVIDENCE:

EAST 1/4 CORNER, SECTION 2, T. 104 N., R. 42 W.,  
NOBLES COUNTY, MINNESOTA

1868 Jewett & Howe, US. Deputy Surveyors, monumented corner.

1/06/2006 Ulteig Engineers, Inc., Survey Crew, Brian Payne Party Chief.  
found a 1" hexagon bar, in the C/L of the gravel road,  
opposite fence lines running east & west.  
Ties: NE-28.9' to "state wildlife area sign" post;  
E-29.6' to nail & bottle cap on fence post leaning east;  
N-2726.97' to NE corner, Section 2;  
S-2575.57' to SE corner, Section 2.