

CERTIFICATE OF LOCATION OF GOVERNMENT CORNER

EAST 1/4 Corner of Section 23, Township 104, Range 42, 5TH P.M.

STATE OF MINNESOTA, County of NOBLES

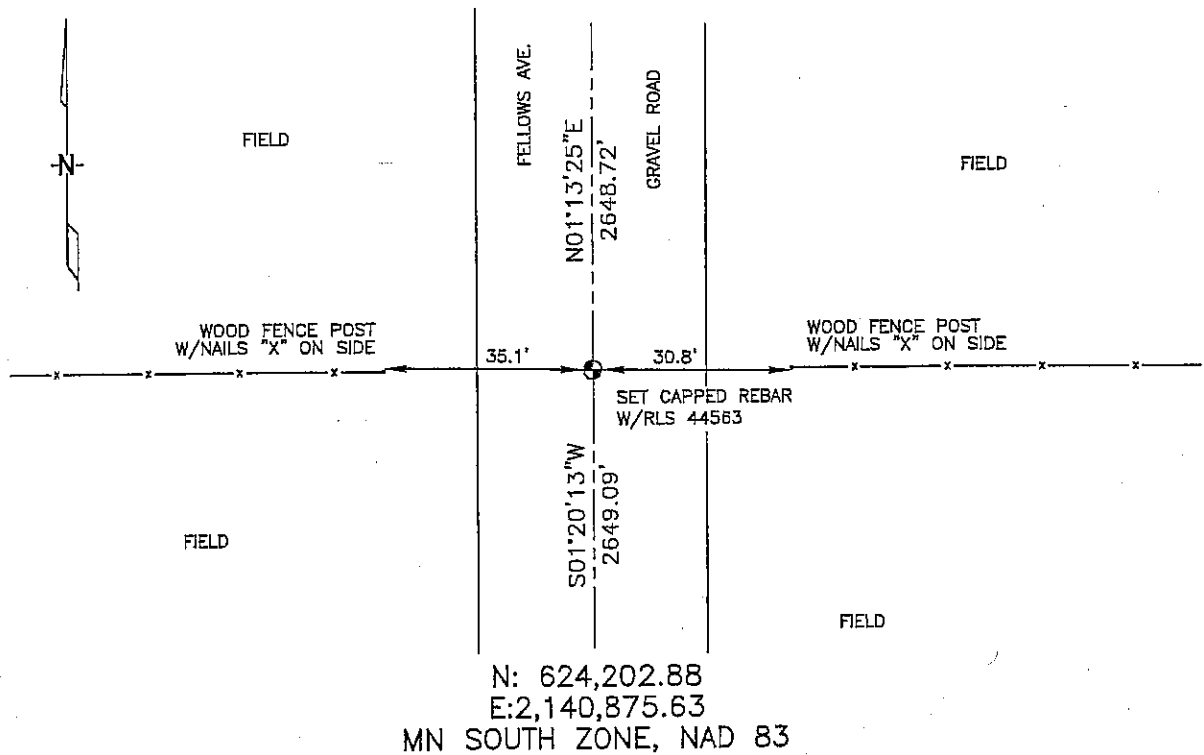
At the corner location shown on the sketch :

On _____ found _____

left monument as found, lowered monument, removed monument (explain)

On 3/9/2006 set 5/8" REBAR W/CAP: RLS 44563 IN GRAVEL ROAD, OPPOSITE EAST & WEST FENCE LINES

Sketch of reference ties



Statement of evidence relative to this corner location is on back page

I hereby certify that this document and the data contained herein was prepared by me or under my direct supervision.

Thomas J. Zeff Signature 5/1/06 Date

Registration No. 44563

Land Surveyor, Professional Engineer

County Surveyor, County Engineer

OFFICE OF THE COUNTY RECORDER

County of _____

I hereby certify that this document was filed in the Co. Recorders office at _____ .M. on the day of _____ A.D. , 20

County Recorder _____
By _____, Deputy

DOCUMENT NO. _____

STATEMENT OF EVIDENCE:

EAST 1/4 CORNER, SECTION 23, T. 104 N., R. 42 W.,
NOBLES COUNTY, MINNESOTA

- 1868 Jewett & Howe, US. Deputy Surveyors, monumented corner.
- 3/9/2006 Ulteig Engineers, Inc., Survey Crew, Brain Payne Party Chief, found nothing. Set a 5/8" rebar with cap: RLS 44563 in gravel road opposite fence lines running east and west.
Ties: W-35.1' to nailed "X" on side of wood, fence post;
E-30.8' to nailed "X" on side of wood, fence post;
N-2648.72' to NE corner, Section 23;
S-2649.09' to SE corner, Section 23.