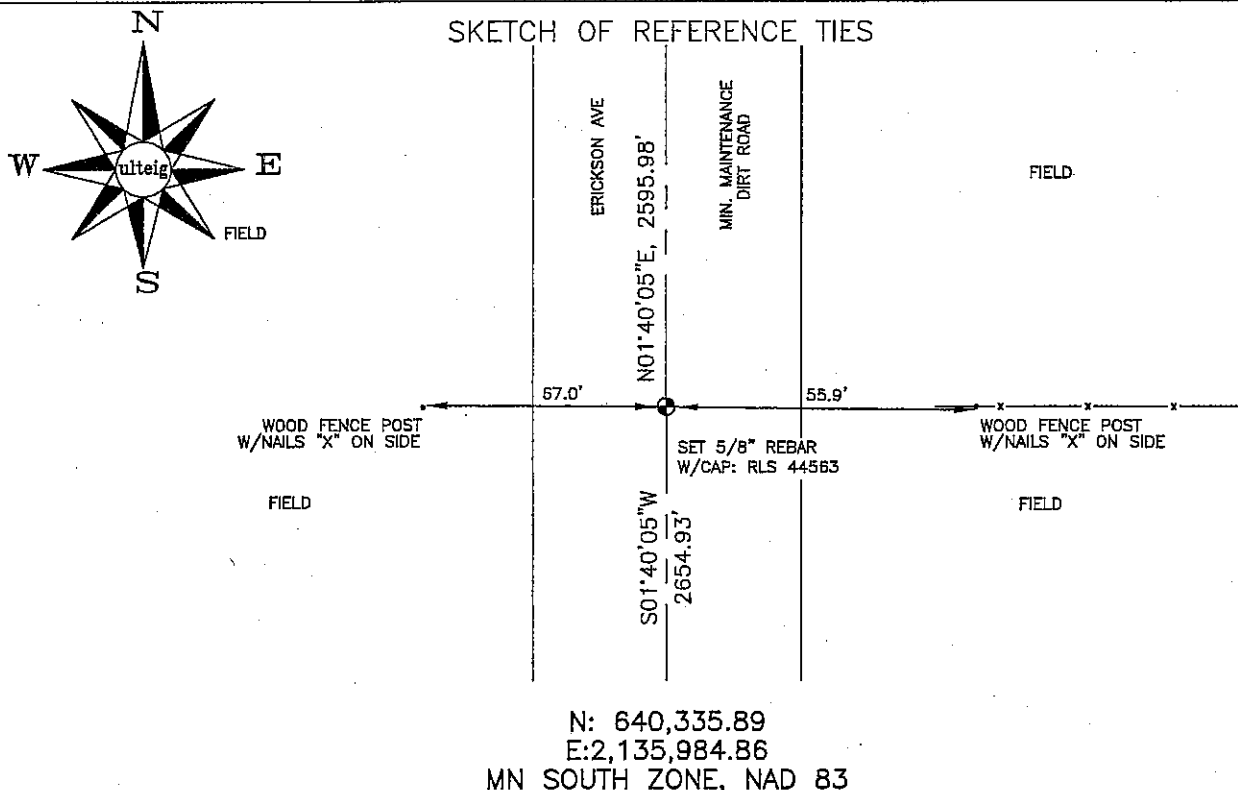


CERTIFICATE OF LOCATION OF GOVERNMENT CORNER

EAST 1/4 Corner of Section 3, Township 104N, Range 42W, 5th P.M.
STATE OF MINNESOTA, County of NOBLES

At the corner location shown on the sketch:

- On _____ found a _____
DATE
- left monument as found, lowered monument, removed monument (explain)
- On 03/07/2006 placed a 5/8" REBAR WITH CAP: RLS 44563.
DATE



NOT TO SCALE
BEARING SYSTEM IS BASED ON MN STATE PLANE COORDINATES, SOUTH ZONE.

Statement of evidence relative to this corner location is on back of page.

I hereby certify that this document and the data contained herein was prepared by me or under my direct supervision.

Thomas V. Zoff 5/1/06
Thomas V. Zoff DATE

Registration No. 44563

- Land Surveyor, Professional Engineer
 County Surveyor, County Engineer

OFFICE OF THE COUNTY RECORDER
County of _____

I hereby certify that this document was filed in the Co. Recorder's office at _____ M. on the _____ day of _____ A.D., 20__

County Recorder _____

By _____, Deputy

DOCUMENT NO. _____

STATEMENT OF EVIDENCE:

EAST 1/4 CORNER, SECTION 3, T.104N., R.42W.,
NOBLES COUNTY, MINNESOTA

1868 JEWETT & HOWE, U.S. DEPUTY SURVEYORS, MONUMENTED CORNER.

03/07/2006 ULTEIG ENGINEERS, INC., SURVEY CREW, BRIAN PAYNE, PARTY
CHIEF, FOUND NOTHING. SET A 5/8" REBAR WITH CAP: RLS 44563.
TIES: E-55.9' TO NAILED "X" IN WOOD POST IN FENCE LINE;
W-67.0' TO NAILED "X" IN WOOD, FENCE POST;
N-2595.98' TO NE CORNER, SECTION 3;
S-2654.93' TO SE CORNER, SECTION 3.