

CERTIFICATE OF LOCATION OF GOVERNMENT CORNER

EAST 1/4 _____ Corner of Section 35, Township 104, Range 42, 5TH P.M.

STATE OF MINNESOTA, County of NOBLES

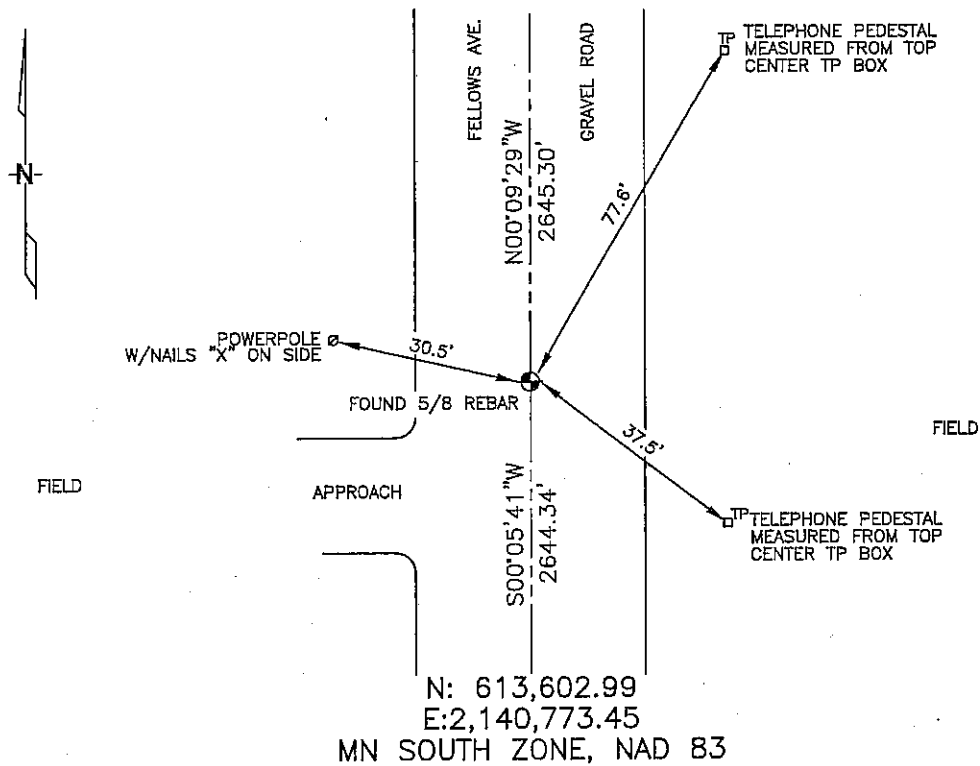
At the corner location shown on the sketch :

On 3/8/2006 found 5/8" REBAR IN GRAVEL ROAD.

left monument as found, lowered monument, removed monument (explain)

On _____ set _____

Sketch of reference ties



Statement of evidence relative to this corner location is on back page

I hereby certify that this document and the data contained herein was prepared by me or under my direct supervision.

Thomas V. JPR 7/17/06
Signature Date

Registration No. 44563

Land Surveyor, Professional Engineer

County Surveyor, County Engineer

OFFICE OF THE COUNTY RECORDER

County of _____

I hereby certify that this document was filed in the Co. Recorders office at _____ .M. on the _____ day of _____ A.D. , 20

County Recorder _____

By _____ , Deputy

DOCUMENT NO. _____

STATEMENT OF EVIDENCE:

EAST 1/4 CORNER, SECTION 35, T. 104 N., R. 43 W.,
NOBLES COUNTY, MINNESOTA

- 1868 Jewett & Howe, US. Deputy Surveyors, monumented corner.
- 3/8/2006 Ulteig Engineers, Survey Crew, Brain Payne Party Chief, found a 5/8" rebar in the gravel road.
Ties: NW-30.5' to nailed "X" on side of power pole;
NE-77.6' to top, center of telephone pedestal;
SE-37.5' to top, center of telephone pedestal;
N-2645.30' to NE corner, Section 35;
S-2644.34' to SE corner, Section 35.