

CERTIFICATE OF LOCATION OF GOVERNMENT CORNER

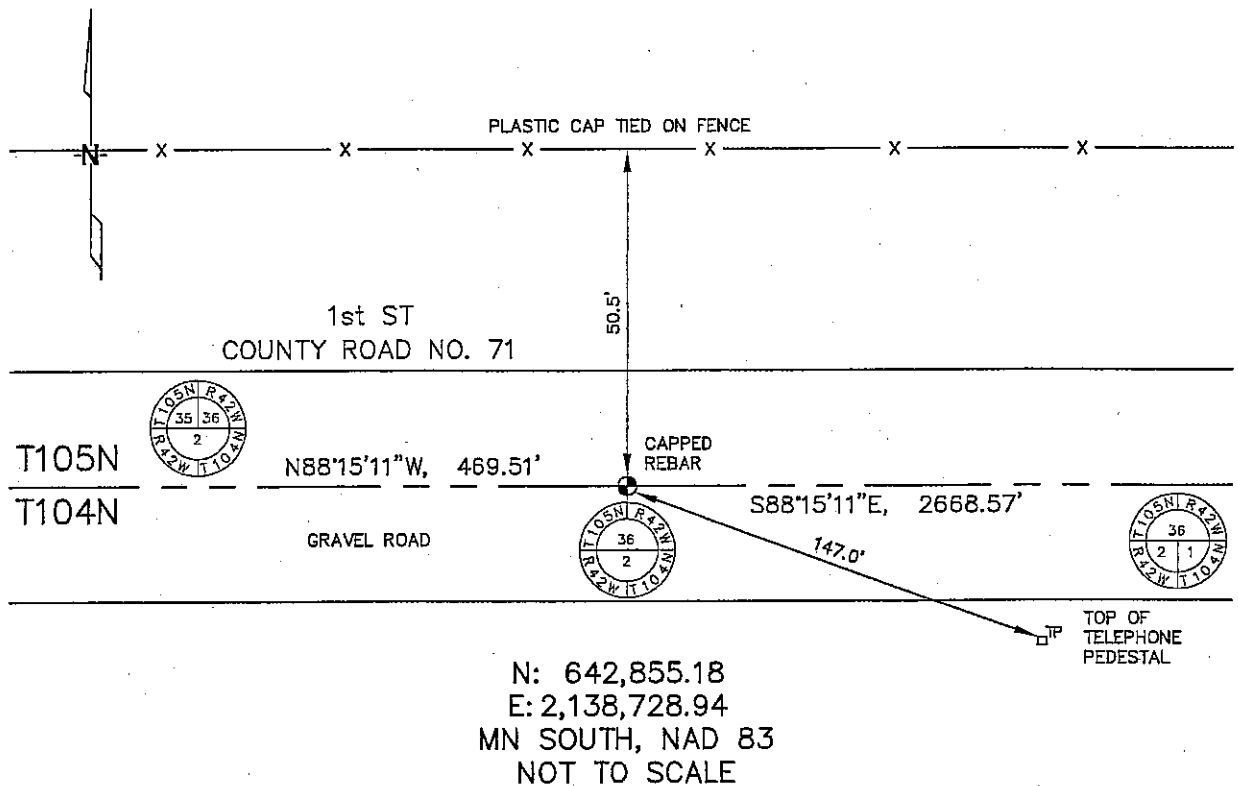
NORTH 1/4 Corner of Section 2, Township 104, Range 42, 5TH P.M.

STATE OF MINNESOTA, County of NOBLES

At the corner location shown on the sketch :

- On _____ found _____
- left monument as found, lowered monument, removed monument (explain)
- On 3/10/2006 set 5/8" REBAR WITH CAP: RLS 44563.

Sketch of reference ties



Statement of evidence relative to this corner location is on back page

A1

I hereby certify that this document and the data contained herein was prepared by me or under my direct supervision.

Thomas V. Jeff 7/7/06
 Thomas V. Jeff Date

- Registration No. 44563
- Land Surveyor, Professional Engineer
- County Surveyor, County Engineer

OFFICE OF THE COUNTY RECORDER

County of _____

I hereby certify that this document was filed in the Co. Recorders office at _____ .M. on the _____ day of _____ A.D. , 20

County Recorder _____
 By _____, Deputy

DOCUMENT NO. _____

STATEMENT OF EVIDENCE:

NORTH 1/4 CORNER, SECTION 2, T. 104 N., R. 42 W.,
NOBLES COUNTY, MINNESOTA

- 1858 W.J. Nealy, US. Deputy Surveyor, monumented north township line.
- 1915 Nobles Co., set a stone on the corner, no ties.
- 1952 Nobles Co., found stone and placed a wood stake on top of same.
No ties.
- 3/10/2006 Ulteig Engineers, Inc., Survey Crew, Brain Payne Party Chief, found nothing. Set a 5/8" rebar with cap: RLS 44563 on the C/L of the gravel road, so as to maintain harmony with the single proportion distances shown on the PLSS Township Plat for T104N, R42W, 5th PM.
Ties: N-50.5' to plastic cap tied to fence line;
SE-147.0' to top, center of telephone pedestal;
W-469.51' to SW corner, Section 36, T105N.
E-2668.57' to NE corner, Section 2.