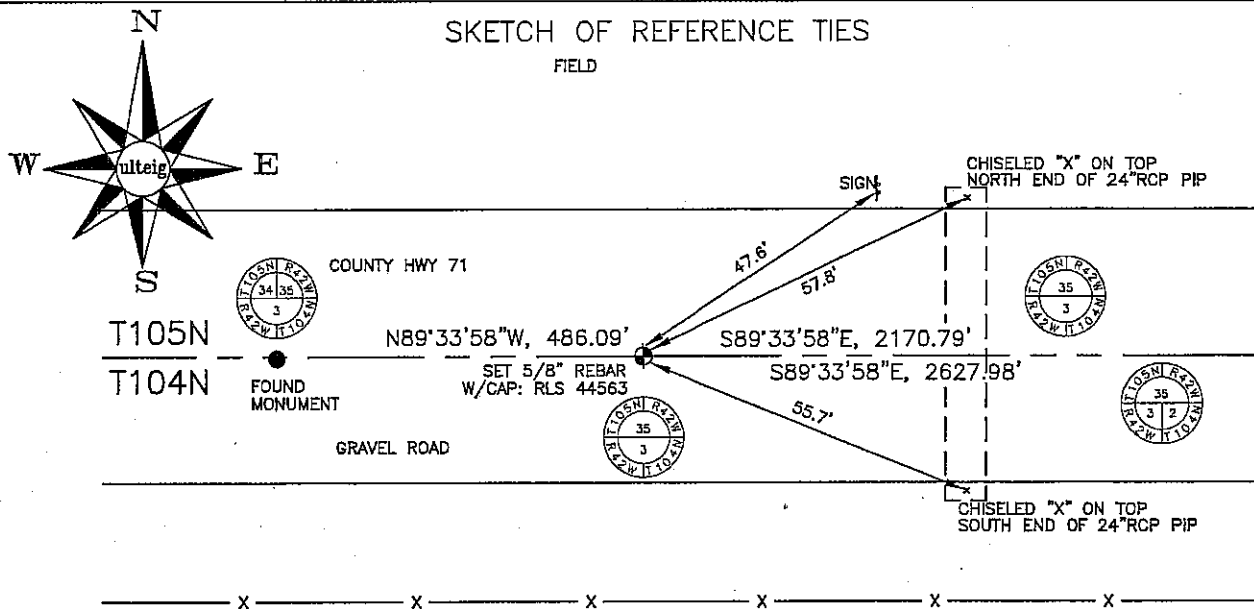


# CERTIFICATE OF LOCATION OF GOVERNMENT CORNER

     NORTH 1/4 Corner of Section     3    , Township 104N, Range 42W, 5th P.M.  
STATE OF MINNESOTA, County of     NOBLES    

At the corner location shown on the sketch:

- On \_\_\_\_\_ found a \_\_\_\_\_  
DATE
- left monument as found,      lowered monument,      removed monument (explain)
- On 03/06/2006 placed a SET 5/8" REBAR WITH CAP: RLS 44563.  
DATE



FIELD  
N: 642,950.67  
E: 2,133,432.51  
MN: SOUTH ZONE, NAD 83

NOT TO SCALE  
BEARING SYSTEM IS BASED ON MN STATE PLANE COORDINATE SYSTEM, SOUTH ZONE.

D52

Statement of evidence relative to this corner location is on back of page.

I hereby certify that this document and the data contained herein was prepared by me or under my direct supervision.

Thomas V. Zettl     5/1/06  
Thomas V. Zettl     DATE

Registration No. 44563

- Land Surveyor,      Professional Engineer
- County Surveyor,      County Engineer

OFFICE OF THE COUNTY RECORDER  
County of \_\_\_\_\_

I hereby certify that this document was filed in the Co. Recorders office at \_\_\_\_\_ M. on the \_\_\_\_\_ day of \_\_\_\_\_ A.D., 20\_\_\_\_

County Recorder \_\_\_\_\_

By \_\_\_\_\_, Deputy

DOCUMENT NO. \_\_\_\_\_

STATEMENT OF EVIDENCE:

NORTH 1/4 CORNER, SECTION 3, T.104N., R.42W.,  
NOBLES COUNTY, MINNESOTA

- 1861 W.J. NEALY, U.S. DEPUTY SURVEYOR, NORTH TOWNSHIP LINE.
- 1915 NOBLES CO., A STONE WAS SET; NO DESCRIPTION OR TIES.
- 1952 NOBLES CO., STONE FOUND, WOOD STAKE PLACED, NO TIES.
- 03/06/2006 ULTEIG ENGINEERS, INC., SURVEY CREW, BRIAN PAYNE PARTY  
CHIEF, FOUND NOTHING, SET 5/8" REBAR WITH CAP: RLS 44563,  
IN GRAVEL ROAD, SO AS TO HARMONIZE SINGLE PROPORTIONAL  
DISTANCES ALONG TOWNSHIP LINE, AS SHOWN ON PLSS TOWNSHIP  
PLAT FOR T104N, R42W, 5th PRINCIPAL MERIDIAN.  
TIES: NE-47.6' TO SIGN POST;  
NE-57.8' TO CHISELED "X" ON TOP, NORTH END OF 24" RCP;  
SE-55.7' TO CHISELED "X" ON TOP, SOUTH END OF 24" RCP;  
E-2627.98' TO NE CORNER, SECTION 3, T 104 N, R 42 W;  
W-486.09' TO SW CORNER, SECTION 35, T 105 N, R 42 W,  
E-2170.79' TO S 1/4 CORNER, SECTION 35.