

CERTIFICATE OF LOCATION OF GOVERNMENT CORNER

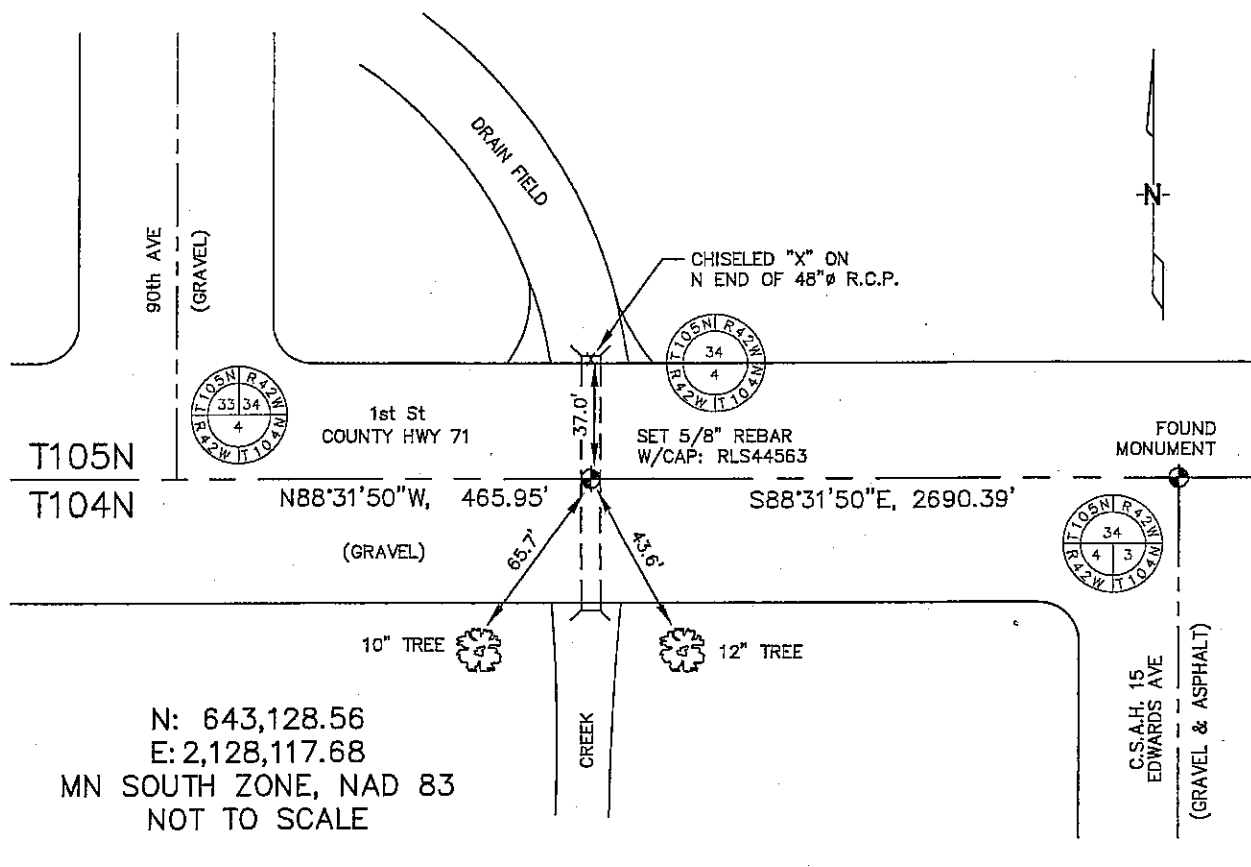
NORTH 1/4 Corner of Section 4, Township 104, Range 42, 5TH P.M.

STATE OF MINNESOTA, County of NOBLES

At the corner location shown on the sketch :

- On _____ found _____
- left monument as found, lowered monument, removed monument (explain)
- On 2/24/06 set A 5/8" REBAR W/CAP: RLS 44563.

Sketch of reference ties



Statement of evidence relative to this corner location is on back page

I hereby certify that this document and the data contained herein was prepared by me or under my direct supervision.

Thomas V. Zell

 Thomas V. Zell
 Registration No. 44563

Land Surveyor, Professional Engineer
 County Surveyor, County Engineer

Date 6/8/06

OFFICE OF THE COUNTY RECORDER
 County of _____

I hereby certify that this document was filed in the Co. Recorders office at _____ M. on the day of _____ A.D. , 20

County Recorder _____
 By _____ , Deputy

DOCUMENT NO. _____

STATEMENT OF EVIDENCE:

NORTH 1/4 CORNER, SECTION 4, T. 104 N., R. 42 W.,
NOBLES COUNTY, MINNESOTA

- 1868 W.J. Nedly, US Deputy Surveyor, monumented north township line.
- 1915 Nobles Co., found stone, no ties.
- 2/24/2006 Ulteig Engineers, Inc., Sioux Falls Office Survey Crew, found nothing.
Set a 5/8" rebar with cap: RLS 44563 in C/L of gravel road
so as to harmonize single proportional distances along township
line as shown on PLSS township plat for T104N, R42W.
Ties: N-37.0' to chiseled "X" on N end of 48"Ø R.C.P.;
SE-43.6' to nailed "X" in 1st tree, east from creek;
SW-65.7' to nailed "X" in 1st tree west from creek;
E-2690.39' to NE corner, Section 4;
W-465.91' to SW corner, Section 34, T105N.