

CERTIFICATE OF LOCATION OF GOVERNMENT CORNER

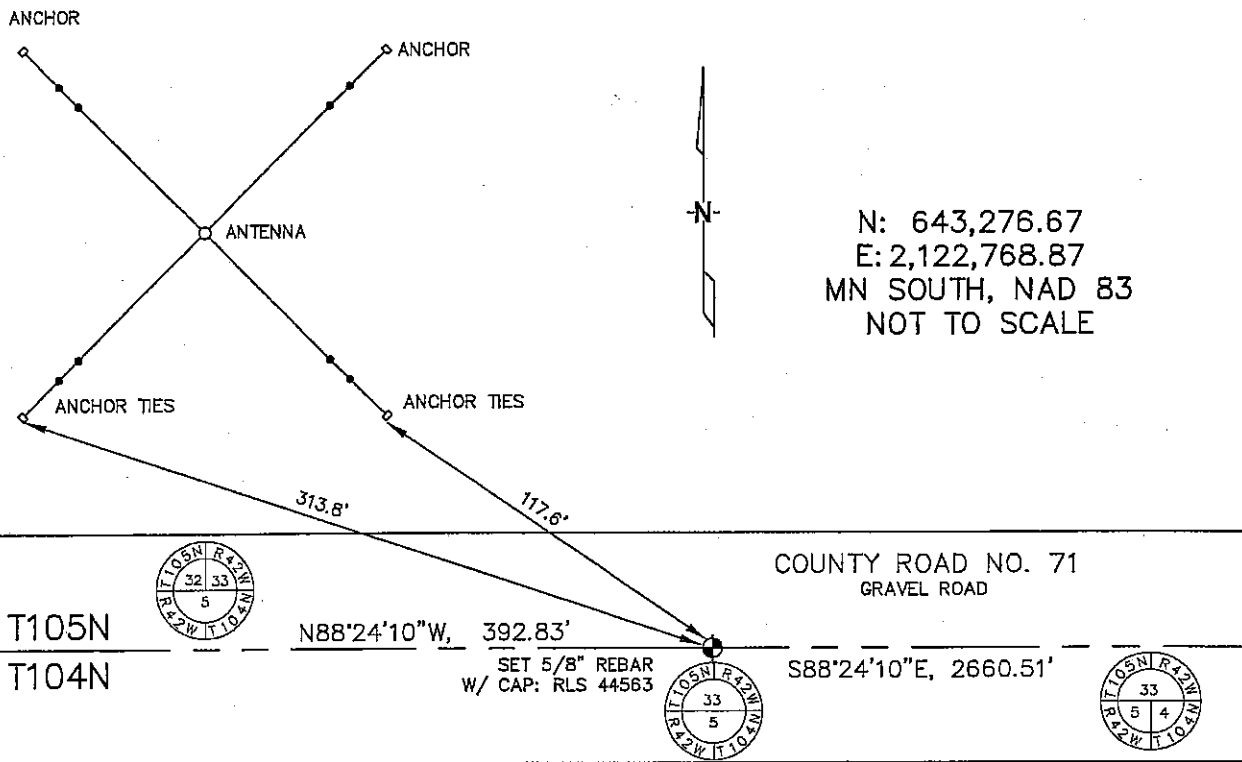
NORTH 1/4 Corner of Section 5, Township 104, Range 42, 5TH P.M.

STATE OF MINNESOTA, County of NOBLES

At the corner location shown on the sketch :

- On \_\_\_\_\_ found \_\_\_\_\_
- left monument as found,  lowered monument,  removed monument (explain)
- On 2/24/2006 set 5/8" REBAR WITH CAP: RLS 44563 IN C/L OF GRAVEL ROAD.

Sketch of reference ties



Statement of evidence relative to this corner location is on back page

I hereby certify that this document and the data contained herein was prepared by me or under my direct supervision.

Thomas M. Zeff 7/6/06  
Thomas M. Zeff Date  
Registration No. 44563

- Land Surveyor,  Professional Engineer
- County Surveyor,  County Engineer

OFFICE OF THE COUNTY RECORDER

County of \_\_\_\_\_

I hereby certify that this document was filed in the Co. Recorders office at \_\_\_\_\_ .M. on the day of \_\_\_\_\_ A.D. , 20

County Recorder \_\_\_\_\_  
By \_\_\_\_\_, Deputy

DOCUMENT NO. \_\_\_\_\_

STATEMENT OF EVIDENCE:

NORTH 1/4 CORNER, SECTION 5, T. 104 N., R. 42 W.,  
NOBLES COUNTY, MINNESOTA

1858 W.J. Niely, US. Deputy Surveyor, monumented north township line.

1915 Nobles Co., set a stone on corner, no ties.

2/24/2006 Ulteig Engineers, Inc., Survey Crew, Brian Payne Party Chief, found nothing. Set a 5/8" rebar with cap: RLS 44563 in C/L of gravel road so as to harmonize with single proportional distances along township line as shown on PLSS Township Plat for T104N, R42W.  
Ties: NW-313.8' to base of antenna guy wires;  
NW-117.6' to base of antenna guy wires;  
W-392.83' to SW corner, Section 33, T105N;  
E-2660.51' to NE corner, Section 5.