

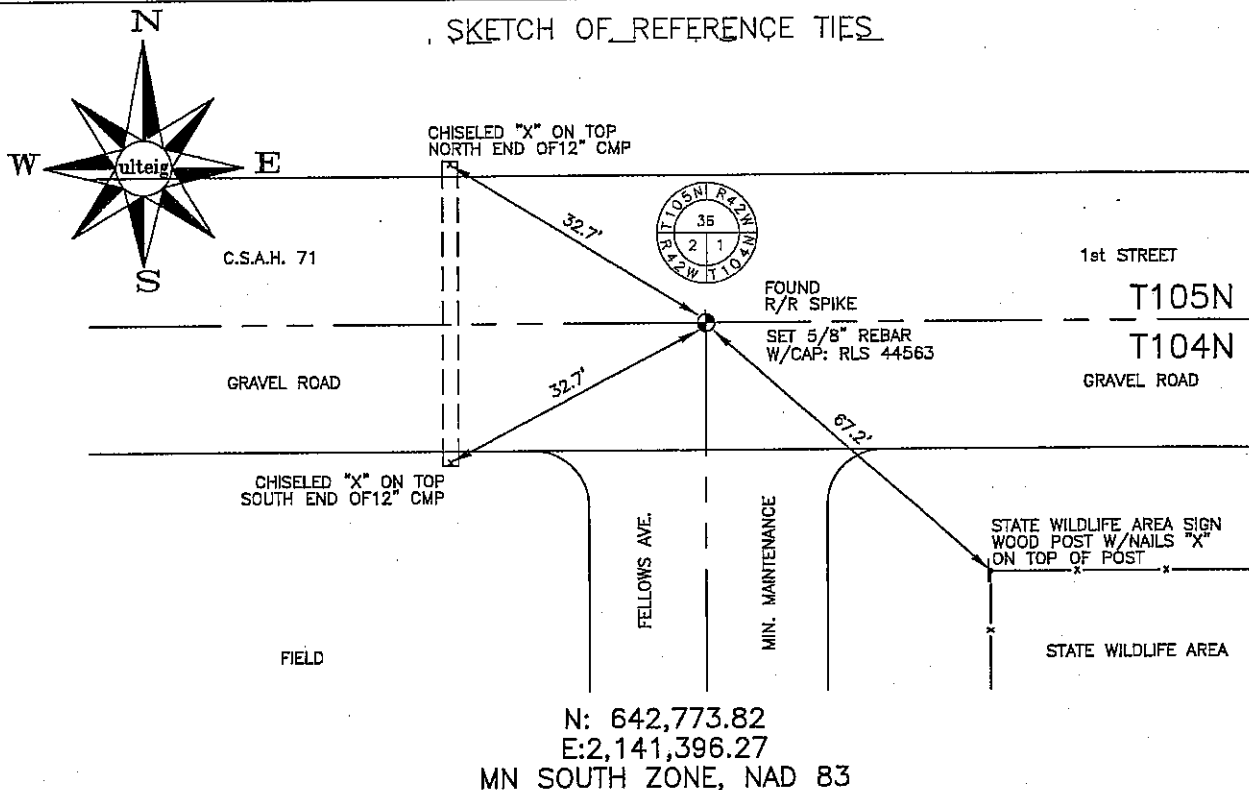
# CERTIFICATE OF LOCATION OF GOVERNMENT CORNER

NORTHEAST Corner of Section 2, Township 104N, Range 42W, 5th P.M.  
 STATE OF MINNESOTA, County of NOBLES

At the corner location shown on the sketch:

- On 03/08/2006 found a R/R SPIKE AT C/L INTERSECTION.  
DATE
- left monument as found,  lowered monument,  removed monument (explain)
- On 03/08/2006 placed a 5/8" REBAR WITH CAP: RLS 44563, IN THE ROAD.  
DATE

## SKETCH OF REFERENCE TIES



NOT TO SCALE  
 BEARING SYSTEM IS BASED ON MN STATE PLANE COORDINATE SYSTEM, SOUTH ZONE. D-55

Statement of evidence relative to this corner location is on back of page.

I hereby certify that this document and the data contained herein was prepared by me or under my direct supervision.

Thomas V. Zeff 5/1/06  
DATE

Registration No. 44563

- Land Surveyor,  Professional Engineer
- County Surveyor,  County Engineer

OFFICE OF THE COUNTY RECORDER

County of \_\_\_\_\_

I hereby certify that this document was filed in the Co. Recorders office at \_\_\_\_\_ M. on the \_\_\_\_\_ day of \_\_\_\_\_ A.D., 20\_\_\_\_

County Recorder \_\_\_\_\_

By \_\_\_\_\_, Deputy

DOCUMENT NO. \_\_\_\_\_

STATEMENT OF EVIDENCE:

NORTHEAST CORNER, SECTION 2, T.104N., R.42W.,  
NOBLES COUNTY, MINNESOTA

1858 W.J. NEALY, U.S. DEPUTY SURVEYOR, MONUMENTED NORTH  
TOWNSHIP LINE.

03/08/2006 ULTEIG ENGINEERS, INC., SURVEY CREW, BRIAN PAYNE, PARTY  
CHIEF, FOUND A R/R SPIKE AT THE C/L INTERSECTION OF THE  
TWO ROADS. SET A 5/8" REBAR WITH CAP: RLS 44563.  
TIES: NW-32.7' TO CHISELED "X" ON TOP, NORTH END 12" CMP  
SW-32.7' TO CHISELED "X" ON TOP, SOUTH END 12" CMP  
SE-67.2' TO STATE WILDLIFE SIGN, WOOD POST W/NAILS  
"X" ON TOP OF POST