

# CERTIFICATE OF LOCATION OF GOVERNMENT CORNER

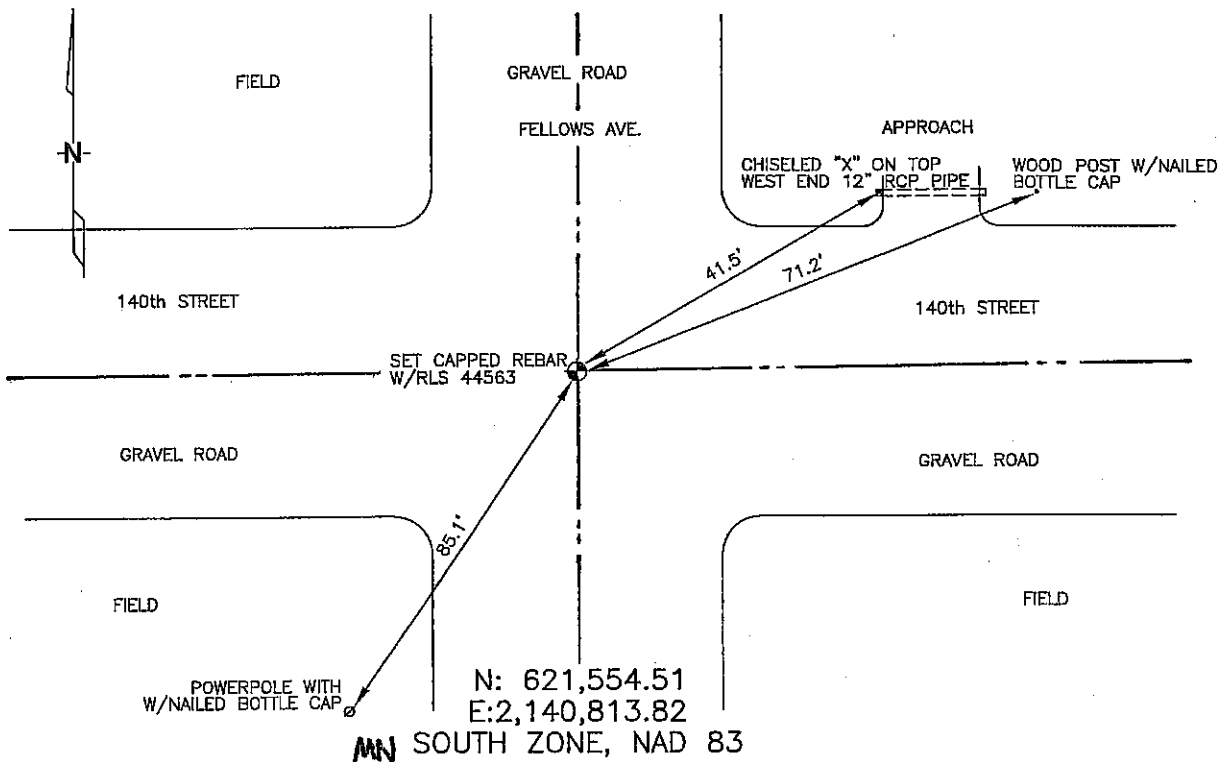
NORTHEAST Corner of Section 26, Township 104, Range 42, 5TH P.M.

STATE OF MINNESOTA, County of Nobles

At the corner location shown on the sketch :

- On \_\_\_\_\_ found \_\_\_\_\_
- left monument as found,  lowered monument,  removed monument (explain)
- On 3/9/2006 set 5/8" Rebar w/capp: RLS 44563

### Sketch of reference ties



Statement of evidence relative to this corner location is on back page

I hereby certify that this document and the data contained herein was prepared by me or under my direct supervision.

Shawn J. Jeff 5/5/06  
Signature Date

Registration No. 44563

Land Surveyor,  Professional Engineer

County Surveyor,  County Engineer

### OFFICE OF THE COUNTY RECORDER

County of \_\_\_\_\_

I hereby certify that this document was filed in the Co. Recorders office at \_\_\_\_\_ M. on the \_\_\_\_\_ day of \_\_\_\_\_ A.D. , 20

County Recorder \_\_\_\_\_  
By \_\_\_\_\_, Deputy

DOCUMENT NO. \_\_\_\_\_

STATEMENT OF EVIDENCE:

NORTHEAST CORNER, SECTION 26, T. 104 N., R. 42 W.,  
NOBLES COUNTY, MINNESOTA

1868

JEWETT & HOWE, US DEPUTY SURVEYORS  
SUBDIVIDED TOWNSHIP INTO SECTIONS.

1901

STONE SET ON CORNER, NO TIES.

1937

STONE FOUND.

2/15/2000

MADSEN LAND SURVEYING

FOUND STONE - 28" DEEP, SET IRON PIN ON S.  
SIDE OF STONE & SET 3/4" x 19" IRON PIN OVER  
STONE.

TIES: SW - 85.10' TO BOTTLE CAP ON POWER POLE  
SE - 49.50' TO TELEPHONE PEDestal  
NE - 71.20' TO BOTTLE CAP ON WOOD POST.

3/9/2006

ULTEIG ENGINEERS, INC.; SURVEY CREW  
BRIAN PAYNE PARTY CHIEF FOUND NOTHING.  
SET 5/8" REBAR w/ CAP: PLS 44563

TIES: SW - 85.1' TO BOTTLE CAP ON POWER POLE.  
NE - 71.2' TO BOTTLE CAP ON WOOD POST.  
NE - 41.5' TO "X" MARK CHISELED INTO TOP  
OF W. END OF 12" RCP.