

CERTIFICATE OF LOCATION OF GOVERNMENT CORNER

NORTHWEST Corner of Section 26, Township 104, Range 42, 5TH P.M.

STATE OF MINNESOTA, County of NOBLES

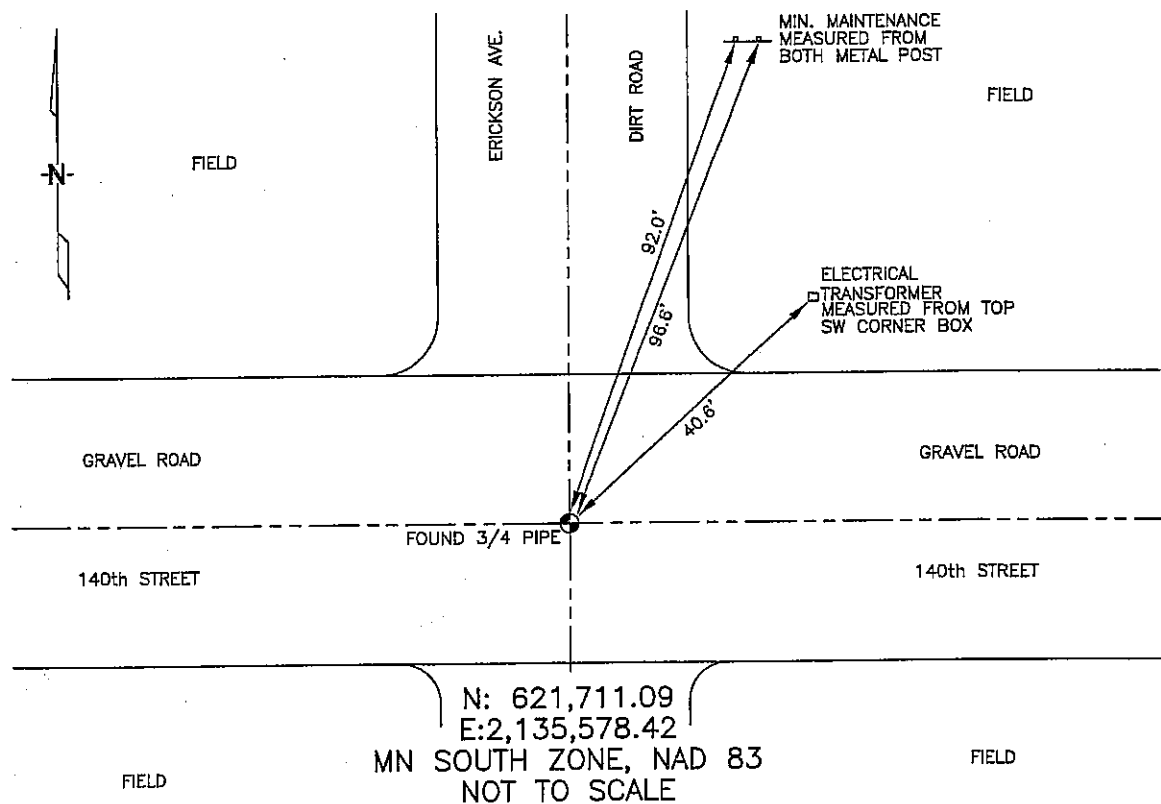
At the corner location shown on the sketch :

On 3/9/2006 found 3/4" IRON PIPE IN DIRT ROAD

left monument as found, lowered monument, removed monument (explain)

On _____ set _____

Sketch of reference ties



Statement of evidence relative to this corner location is on back page

D67

I hereby certify that this document and the data contained herein was prepared by me or under my direct supervision.

Thomas V. Zeff 5/5/06
 Thomas V. Zeff Date
 Registration No. 44563

- Land Surveyor, Professional Engineer
 County Surveyor, County Engineer

OFFICE OF THE COUNTY RECORDER

County of _____

I hereby certify that this document was filed in the Co. Recorders office at _____ .M. on the _____ day of _____ A.D. , 20

County Recorder _____
 By _____, Deputy

DOCUMENT NO. _____

STATEMENT OF EVIDENCE:

NORTHWEST CORNER, SECTION 26, T. 104 N., R. 42 W.,
NOBLES COUNTY, MINNESOTA

- 1868 Jewett & Howe, US. Deputy Surveyors, monumented corner.
- 1901 Nobles Co., set stone on corner; no ties.
- 2/15/2000 Madsen Land Surveying, found stone, 27" deep with wood stake on south side of stone; set 3/4"X24" iron pipe over stone, 4" below ground surface.
Ties: NE-40.7' to SW corner of electrical box;
NE-92.15' to west post of "Minimum Maintenance Sign";
SW-96.7' to east post of "Minimum Maintenance Sign".
- 3/09/2006 Ulteig Engineers, Inc., survey crew, Brian Payne Party Chief, found a 3/4" iron pipe in dirt road.
Ties: NE(1)-92.0' to W post of "Minimum Maintenance Sign";
NE(2)-96.6' to E post of "Minimum Maintenance Sign";
NE(3)-40.6' to top of SW corner of electrical transformer box.