

## CERTIFICATE OF LOCATION OF GOVERNMENT CORNER

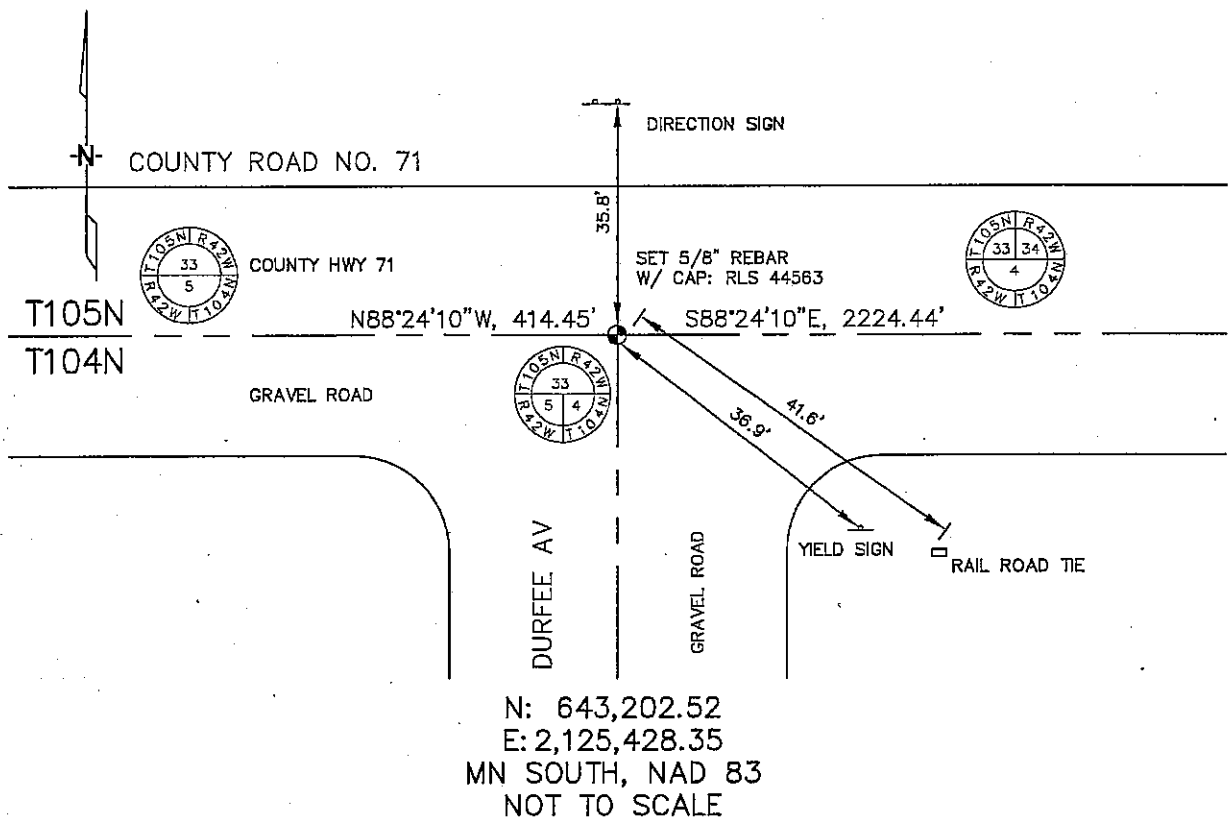
NORTHWEST Corner of Section 4, Township 104, Range 42, 5TH P.M.

STATE OF MINNESOTA, County of NOBLES

At the corner location shown on the sketch :

- On \_\_\_\_\_ found \_\_\_\_\_
- left monument as found,  lowered monument,  removed monument (explain)
- On 3/06/2006 set SET A 5/8" REBAR WITH CAP: RLS 44563.

### Sketch of reference ties



Statement of evidence relative to this corner location is on back page

I hereby certify that this document and the data contained herein was prepared by me or under my direct supervision.

Thomas V. Zell 7/6/06  
 Thomas V. Zell Date  
 Registration No. 44563

- Land Surveyor,  Professional Engineer  
 County Surveyor,  County Engineer

### OFFICE OF THE COUNTY RECORDER

County of \_\_\_\_\_

I hereby certify that this document was filed in the Co. Recorders office at \_\_\_\_\_ M. on the \_\_\_\_\_ day of \_\_\_\_\_ A.D. , 20\_\_\_\_

County Recorder \_\_\_\_\_  
 By \_\_\_\_\_, Deputy

DOCUMENT NO. \_\_\_\_\_

STATEMENT OF EVIDENCE:

NORTHWEST CORNER, SECTION 4, T. 104 N., R. 42 W.,  
NOBLES COUNTY, MINNESOTA

- 1858 W.J. Niely, US. Deputy Surveyor, monumented north township line.
- 1915 Nobles Co., found a stone on the corner, no ties.
- 3/06/2006 Ulteig Engineers, Inc., Survey Crew, Brian Payne Party Chief, found nothing. Set a 5/8" rebar with cap: RLS 44563 at C/L intersection of gravel roads, so as to harmonize with the single proportional distances along township line as shown on the PLSS Township Plat for T104N, R42W, 5th Meridian.
- Ties: N-35.8' to E post of "direction sign";  
SE-41.6' to railroad tie;  
SE-36.9' to "yield sign" post;  
W-414.45' to S 1/4 corner, Section 33, T105N;  
E-2224.44' to SW corner, Section 33;