

CERTIFICATE OF LOCATION OF GOVERNMENT CORNER

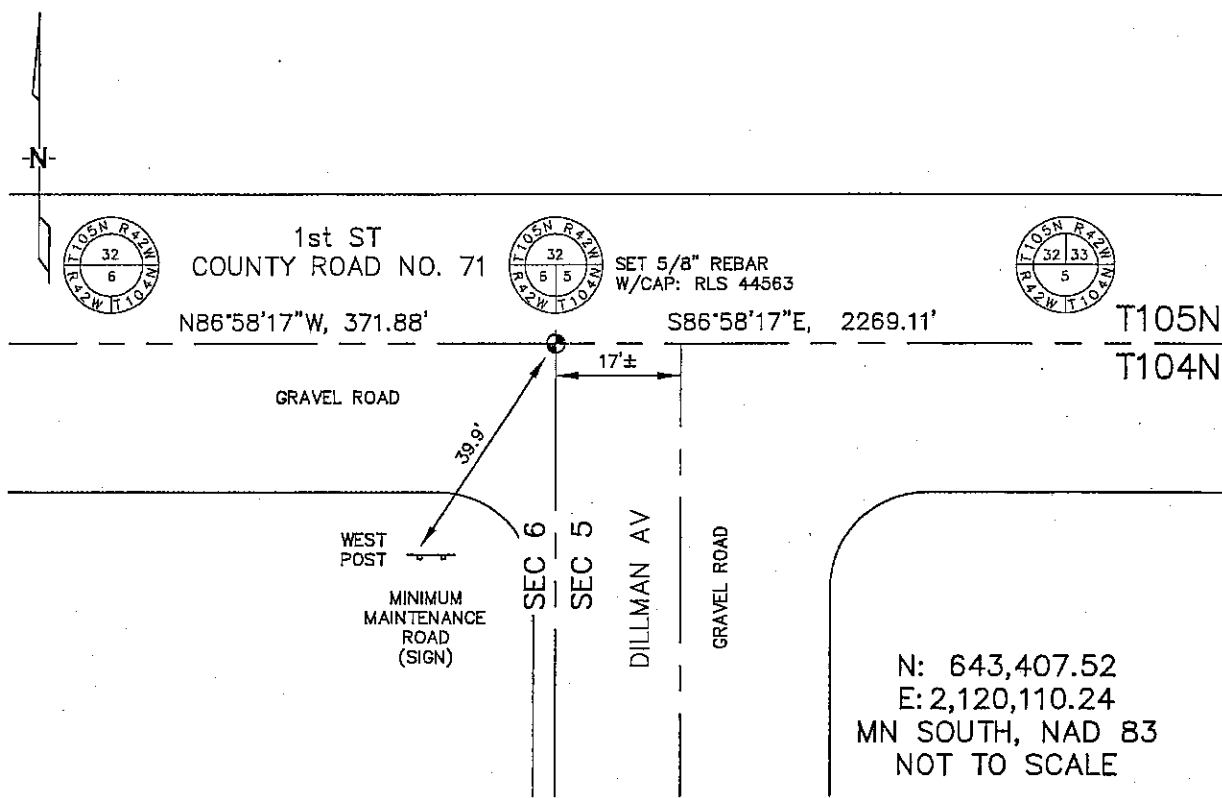
NORTHWEST Corner of Section 5, Township 104, Range 42, 5TH P.M.

STATE OF MINNESOTA, County of NOBLES

At the corner location shown on the sketch :

- On _____ found _____
- left monument as found, lowered monument, removed monument (explain)
- On 3/10/2006 set 5/8" REBAR WITH CAP: RLS 44563.

Sketch of reference ties



Statement of evidence relative to this corner location is on back page

A9

I hereby certify that this document and the data contained herein was prepared by me or under my direct supervision.

Thomas V. Zeff 7/7/06
 Thomas V. Zeff Date
 Registration No. 44563

- Land Surveyor, Professional Engineer
- County Surveyor, County Engineer

OFFICE OF THE COUNTY RECORDER

County of _____

I hereby certify that this document was filed in the Co. Recorders office at _____ M. on the day of _____ A.D. , 20

County Recorder _____
 By _____, Deputy

DOCUMENT NO. _____

STATEMENT OF EVIDENCE:

NORTHWEST CORNER, SECTION 5, T. 104 N., R. 42 W.,
NOBLES COUNTY, MINNESOTA

- 1858 W.J. Nealy, US. Deputy Surveyor, monumented north township line.
- 1915 Nobles Co., set a stone on the corner; no ties.
- 3/10/2006 Ulteig Engineers, Inc., Survey Crew, Brian Payne Party Chief, found nothing. Set a 5/8" rebar with cap: RLS 44563 in C/L of gravel road so as to harmonize single proportion distances shown on the PLSS Township Plat for T104N, R42W, 5th Principal Meridian.
Ties: SW-39.9' to west post of "minimum maintenance road sign";
W-371.88' to S 1/4 corner, Section 32, T105N;
E-2269.11' to Southeast corner, Section 32.