

CERTIFICATE OF LOCATION OF GOVERNMENT CORNER

SOUTH 1/4 Corner of Section 11, Township 104, Range 42, 5TH P.M.

STATE OF MINNESOTA, County of NOBLES

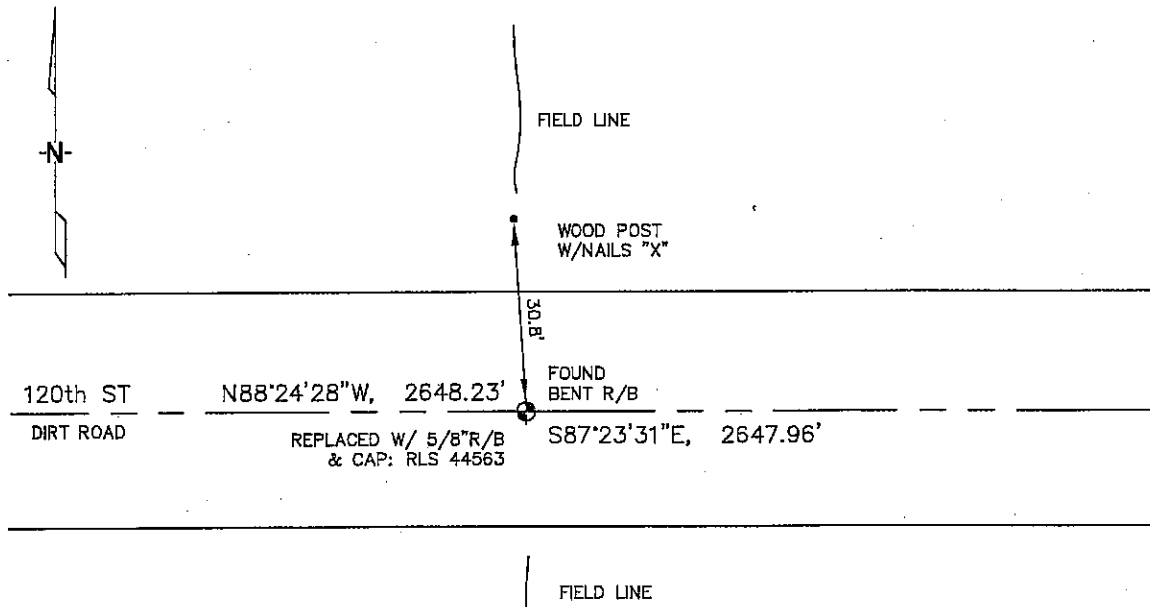
At the corner location shown on the sketch :

On 1/06/2006 found A BENT REBAR IN THE C/L OF A DIRT ROAD.

left monument as found, lowered monument, removed monument (explain)

On 1/06/2006 set A 5/8" REBAR WITH CAP: RLS 44563 IN ITS PLACE.

Sketch of reference ties



N: 632,256.34
E: 2,138,391.88
MN SOUTH, NAD 83
NOT TO SCALE

Statement of evidence relative to this corner location is on back page

I hereby certify that this document and the data contained herein was prepared by me or under my direct supervision.

Thomas V. Zell 7/10/06
Thomas V. Zell Date

Registration No. 44563

- Land Surveyor, Professional Engineer
- County Surveyor, County Engineer

OFFICE OF THE COUNTY RECORDER

County of _____

I hereby certify that this document was filed in the Co. Recorders office at _____ M. on the day of _____ A.D. , 20

County Recorder _____
By _____, Deputy

DOCUMENT NO. _____

STATEMENT OF EVIDENCE:

SOUTH 1/4 CORNER, SECTION 11, T. 104 N., R. 42 W.,
NOBLES COUNTY, MINNESOTA

1868 Jewett & Howe, US. Deputy Surveyors, monumented corner.

1891 Nobles Co., found a stake at corner; no ties.

1/06/2006 Ulteig Engineers, Inc., Survey Crew, Brian Payne Party Chief, found a bent rebar in the C/L of a dirt road. Replaced same with a 5/8" rebar with cap: RLS 44563.

Ties: N-30.8' to nailed "X" on wood post & remains of fence line;
E-2647.96' to SE corner, Section 11;
W-2648.23' to SW corner, Section 11.