

### CERTIFICATE OF LOCATION OF GOVERNMENT CORNER

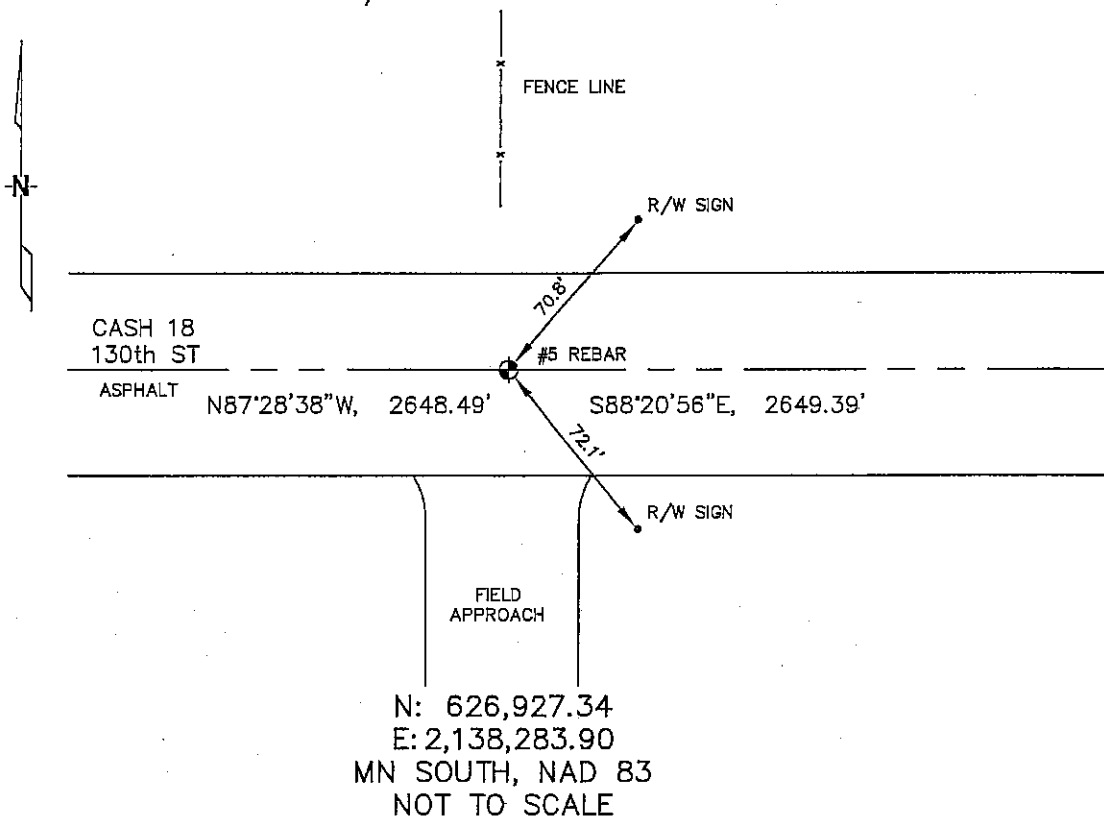
SOUTH 1/4 Corner of Section 14, Township 104, Range 42, 5TH P.M.

STATE OF MINNESOTA, County of NOBLES

At the corner location shown on the sketch :

- On 1/06/2006 found A #5 REBAR IN ASPHALT PAVEMENT,  
OPPOSITE A FENCE LINE RUNNING NORTH.  
 left monument as found,  lowered monument,  removed monument (explain)  
 On \_\_\_\_\_ set \_\_\_\_\_

Sketch of reference ties



N: 626,927.34  
 E: 2,138,283.90  
 MN SOUTH, NAD 83  
 NOT TO SCALE

Statement of evidence relative to this corner location is on back page

I hereby certify that this document and the data contained herein was prepared by me or under my direct supervision.

Thomas V. Zeff 7/10/06  
 Thomas V. Zeff Date

Registration No. 44563

- Land Surveyor,  Professional Engineer  
 County Surveyor,  County Engineer

#### OFFICE OF THE COUNTY RECORDER

County of \_\_\_\_\_

I hereby certify that this document was filed in the Co. Recorders office at \_\_\_\_\_ M. on the day of \_\_\_\_\_ A.D. , 20

County Recorder \_\_\_\_\_  
 By \_\_\_\_\_, Deputy

DOCUMENT NO. \_\_\_\_\_

STATEMENT OF EVIDENCE:

SOUTH 1/4 CORNER, SECTION 14, T. 104 N., R. 42 W.,  
NOBLES COUNTY, MINNESOTA

- 1868 Jewett & Howe, US. Deputy Surveyors, monumented corner.
- 1901 Nobles Co., found stone on corner, no ties.
- 1936 Nobles Co., found stone, no ties.
- 1962 Nobles Co., found stone, place wood stake on top of stone, no ties.
- 1970 Nobles Co., found an iron pipe on corner, no ties.
- 1991 Nobles Co., found iron pipe, no ties.
- 1996 Nobles Co., placed a 3/8"X3" rebar.  
Ties: SW-42.4' to nail in field entrance drain pipe;  
SE-55.03' to nail in field entrance drain pipe;  
NE-70.75' to top bolt on R/W sign.
- 1/06/2006 Uiteig Engineers, Inc., Survey Crew, Brian Payne Party Chief, found a #5 rebar in the asphalt of 130th Street, opposite a fence line running north.  
Ties: NE-70.8' to R/W sign;  
SE-72.1' to R/W sign;  
E-2649.39' to SE corner, Section 14;  
W-2648.49' to SW corner, Section 14.