

### CERTIFICATE OF LOCATION OF GOVERNMENT CORNER

SOUTH 1/4 Corner of Section 2, Township 104, Range 42, 5TH P.M.

STATE OF MINNESOTA, County of NOBLES

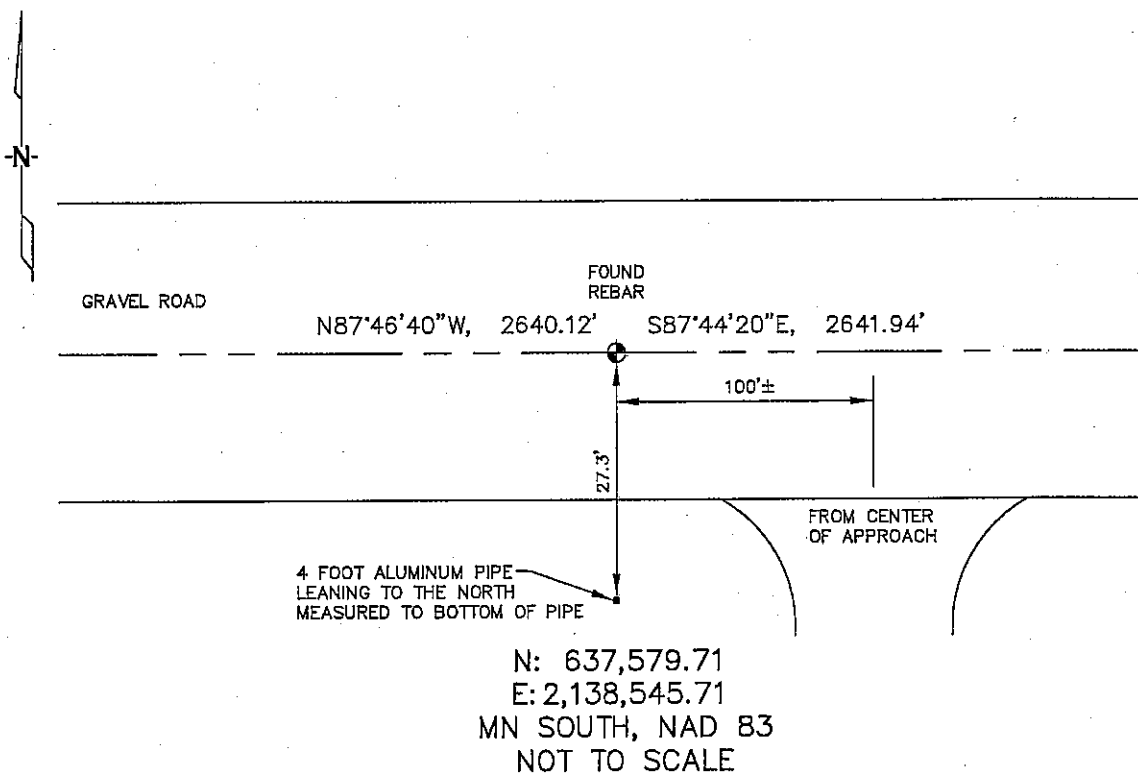
At the corner location shown on the sketch :

On 1/06/2006 found A REBAR AT THE C/L INTERSECTION OF THE GRAVEL ROADS.

left monument as found,  lowered monument,  removed monument (explain)

On \_\_\_\_\_ set \_\_\_\_\_

#### Sketch of reference ties



Statement of evidence relative to this corner location is on back page

I hereby certify that this document and the data contained herein was prepared by me or under my direct supervision.

Thomas V. Zeff 7/10/06  
Thomas V. Zeff Date  
Registration No. 44563

Land Surveyor,  Professional Engineer  
 County Surveyor,  County Engineer

#### OFFICE OF THE COUNTY RECORDER

County of \_\_\_\_\_

I hereby certify that this document was filed in the Co. Recorders office at \_\_\_\_\_ .M. on the day of \_\_\_\_\_ A.D. , 20

County Recorder \_\_\_\_\_

By \_\_\_\_\_, Deputy

DOCUMENT NO. \_\_\_\_\_

STATEMENT OF EVIDENCE:

SOUTH 1/4 CORNER, SECTION 2, T. 104 N., R. 42 W.,  
NOBLES COUNTY, MINNESOTA

- 1868 Jewett & Howe, US. Deputy Surveyors, monumented corner.
- 1/06/2006 Uteig Engineers, Inc., Survey Crew, Brain Payne Party Chief,  
found a rebar on the C/L of a gravel road.  
Ties: E-2641.94' to NE corner, Section 11;  
W-2640.12' to NW corner, Section 11.  
S-27.3' to bottom of 4' tall, aluminum pipe, leaning north;  
E-100'± to C/L of field approach.