

CERTIFICATE OF LOCATION OF GOVERNMENT CORNER

SOUTH 1/4 Corner of Section 23, Township 104, Range 42, 5TH P.M.

STATE OF MINNESOTA, County of NOBLES

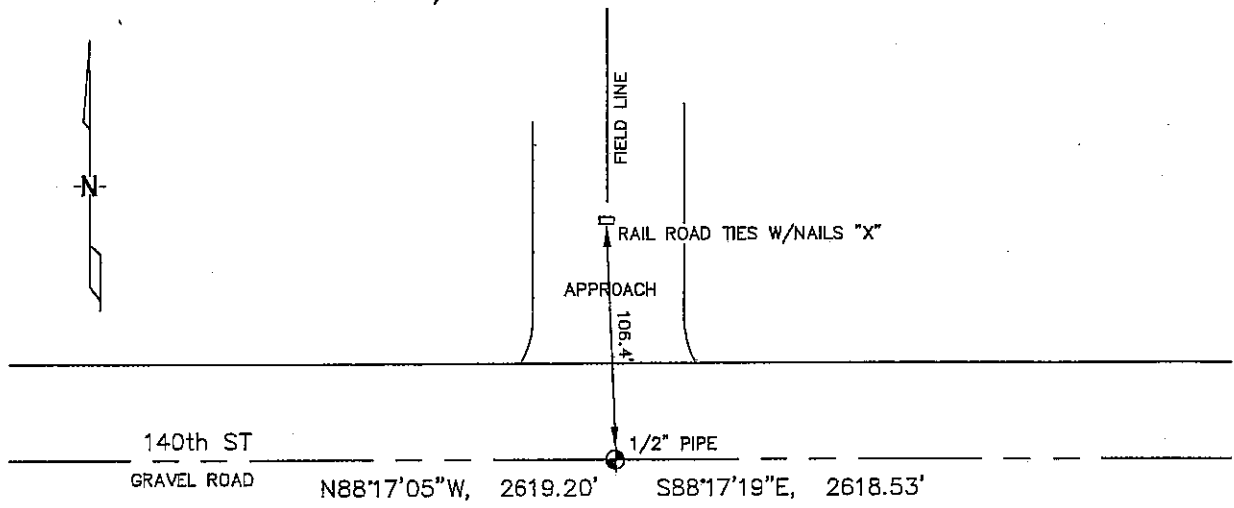
At the corner location shown on the sketch :

On 1/09/2006 found 1/2" IRON PIPE IN THE GRAVEL ROAD.

left monument as found, lowered monument, removed monument (explain)

On _____ set _____

Sketch of reference ties



N: 621,632.71
E: 2,138,196.45
MN SOUTH, NAD 83
NOT TO SCALE

Statement of evidence relative to this corner location is on back page

I hereby certify that this document and the data contained herein was prepared by me or under my direct supervision.

Thomas V. Zep 7/10/06
Thomas V. Zep Date

Registration No. 44563

Land Surveyor, Professional Engineer

County Surveyor, County Engineer

OFFICE OF THE COUNTY RECORDER

County of _____

I hereby certify that this document was filed in the Co. Recorders office at _____ M. on the _____ day of _____ A.D. , 20

County Recorder _____

By _____, Deputy

DOCUMENT NO. _____

STATEMENT OF EVIDENCE:

SOUTH 1/4 CORNER, SECTION 23, T. 104 N., R. 42 W.,
NOBLES COUNTY, MINNESOTA

- 1868 Jewett & Howe, US. Deputy Surveyors, monumented corner.
- 1901 Nobles Co., found stone on corner, no ties.
- 2/15/2000 Madsen Land Surveying, found 8"X12"X14" stone with wood stake on south edge of stone (20" deep); removed stone & set a 3/4"X24" iron pin (24" deep) and set a 2nd 3/4"X24" iron pin (4" deep).
Ties: N-107.0' to bottle cap in wood post.
- 1/09/2006 Ulteig Engineers, Inc., Survey Crew, Brian Payne Party Chief, found a 1/2" iron pipe in the gravel road, opposite the approximate center of a field approach and opposite a field line running north.
Ties: N-106.4' to nailed "X" on R/R tie set vertically in the approach.
E-2618.53' to SE corner, Section 23;
W-2619.20' to SW corner, Section 23.