

### CERTIFICATE OF LOCATION OF GOVERNMENT CORNER

SOUTH 1/4 Corner of Section 3, Township 104, Range 42, 5TH P.M.

STATE OF MINNESOTA, County of NOBLES

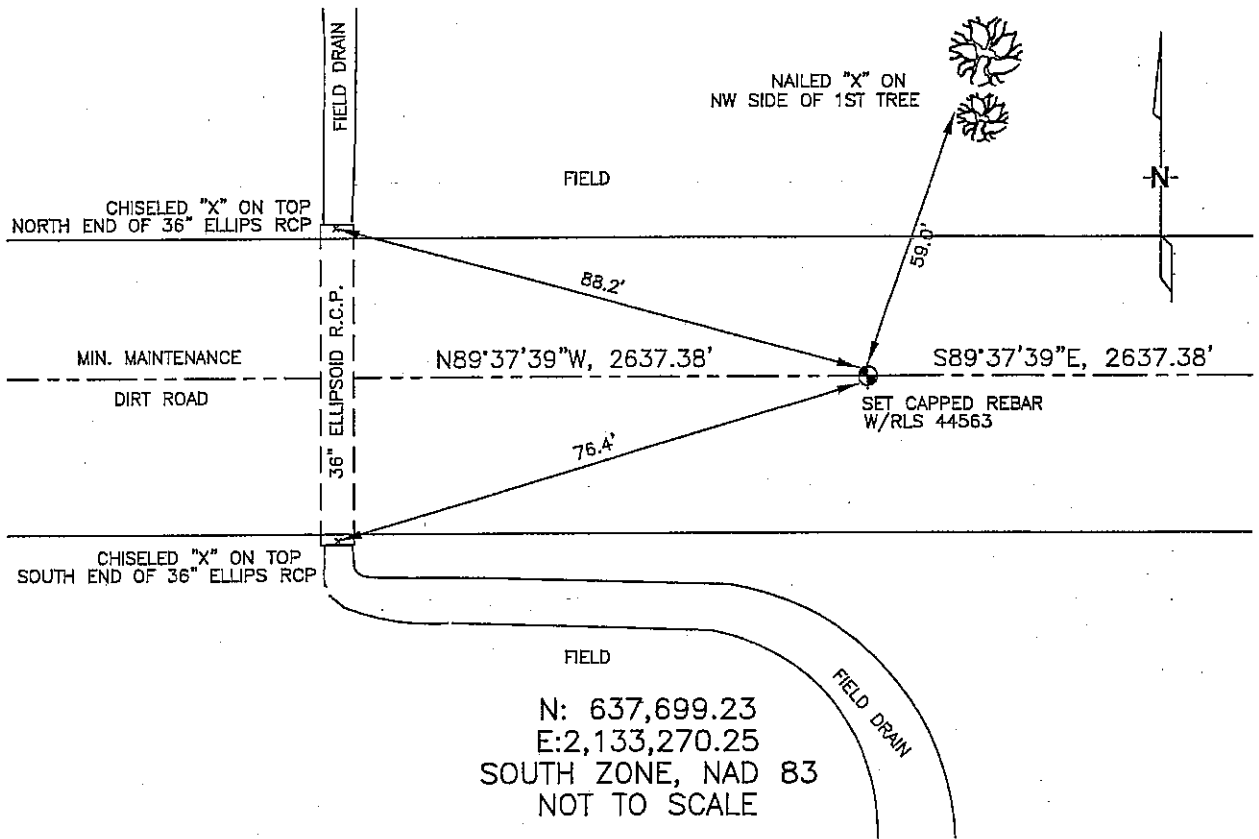
At the corner location shown on the sketch :

On \_\_\_\_\_ found \_\_\_\_\_

left monument as found,  lowered monument,  removed monument (explain)

On 3/7/06 set A 5/8" REBAR WITH CAP: RLS 44563.

#### Sketch of reference ties



Statement of evidence relative to this corner location is on back page

D56

I hereby certify that this document and the data contained herein was prepared by me or under my direct supervision.

Thomas V. Zeff 6/08/06  
 \_\_\_\_\_ Date  
 Thomas V. Zeff  
 Registration No. 44563

Land Surveyor,  Professional Engineer  
 County Surveyor,  County Engineer

#### OFFICE OF THE COUNTY RECORDER

County of \_\_\_\_\_

I hereby certify that this document was filed in the Co. Recorders office at \_\_\_\_\_ .M. on the \_\_\_\_\_ day of \_\_\_\_\_ A.D. , 20

County Recorder \_\_\_\_\_  
 By \_\_\_\_\_, Deputy

DOCUMENT NO. \_\_\_\_\_

STATEMENT OF EVIDENCE:

SOUTH 1/4 CORNER, SECTION 3, T. 104 N., R. 42 W.,  
NOBLES COUNTY, MINNESOTA

- 1868 Jewett & Howe, US. Deputy Surveyors, monumented corner.
- 3/07/2006 Ulteig Engineers, Inc., Survey Crew, Brian Payne Party Chief, found nothing. Set a 5/8" rebar with cap: RLS 44563 in the gravel road, south from the road C/L & equidistant between section corners.  
Ties: NW-88.2' to chiseled "X" on N end, 36" ellipsoid, R.C.P.;  
SW-76.4' to chiseled "X" on S end, 36" ellipsoid, R.C.P.;  
NE-59.0' to nailed "X", in NW face of 1st tree.  
E-2637.38' to SE corner, Section 3;  
W-2637.38' to SW corner, Section 3.