

CERTIFICATE OF LOCATION OF GOVERNMENT CORNER

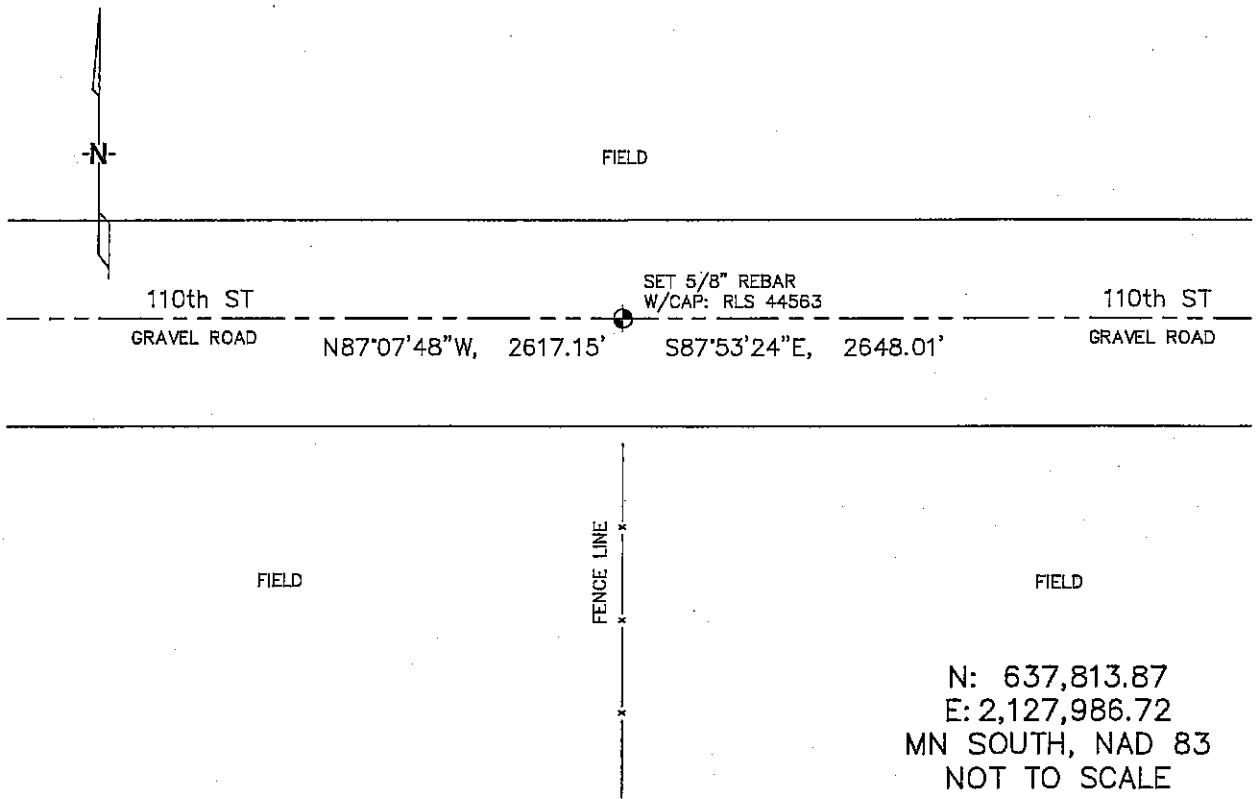
SOUTH 1/4 Corner of Section 4 Township 104, Range 42, 5TH P.M.

STATE OF MINNESOTA, County of NOBLES

At the corner location shown on the sketch :

- On _____ found _____
- left monument as found, lowered monument, removed monument (explain)
- On 8/25/06 set A 5/8" REBAR WITH CAP: RLS 44563,
OPPOSITE A FENCE LINE RUNNING SOUTH.

Sketch of reference ties



Statement of evidence relative to this corner location is on back page

I hereby certify that this document and the data contained herein was prepared by me or under my direct supervision.

Thomas J. Zeff 8/25/06
 Thomas J. Zeff Date
 Registration No. 44563

Land Surveyor, Professional Engineer
 County Surveyor, County Engineer

OFFICE OF THE COUNTY RECORDER

County of _____

I hereby certify that this document was filed in the Co. Recorders office at _____ .M. on the _____ day of _____ A.D. , 20____

County Recorder _____
 By _____, Deputy

DOCUMENT NO. _____

STATEMENT OF EVIDENCE:

SOUTH 1/4 CORNER, SECTION 4, T. 104 N., R. 42 W.,
NOBLES COUNTY, MINNESOTA

- 1868 Jewett & Howe, US. Deputy Surveyors, monumented corner.
- 1900 Nobles Co., set stone on 1/4 corner; no ties.
- 1937 Nobles Co., found stone; no ties.
- 8/25/2006 Uiteig Engineers, Inc., Survey Crew, Fargo Office, found nothing.
Set a 5/8" rebar with cap: RLS 44563, in C/L of the gravel road
opposite a fence line running south.
Ties: E-2648.01' to SE corner, Section 4;
W-2617.15' to SW corner, Section 4.