

CERTIFICATE OF LOCATION OF GOVERNMENT CORNER

SOUTHEAST Corner of Section 14, Township 104, Range 42, 5TH P.M.

STATE OF MINNESOTA, County of NOBLES

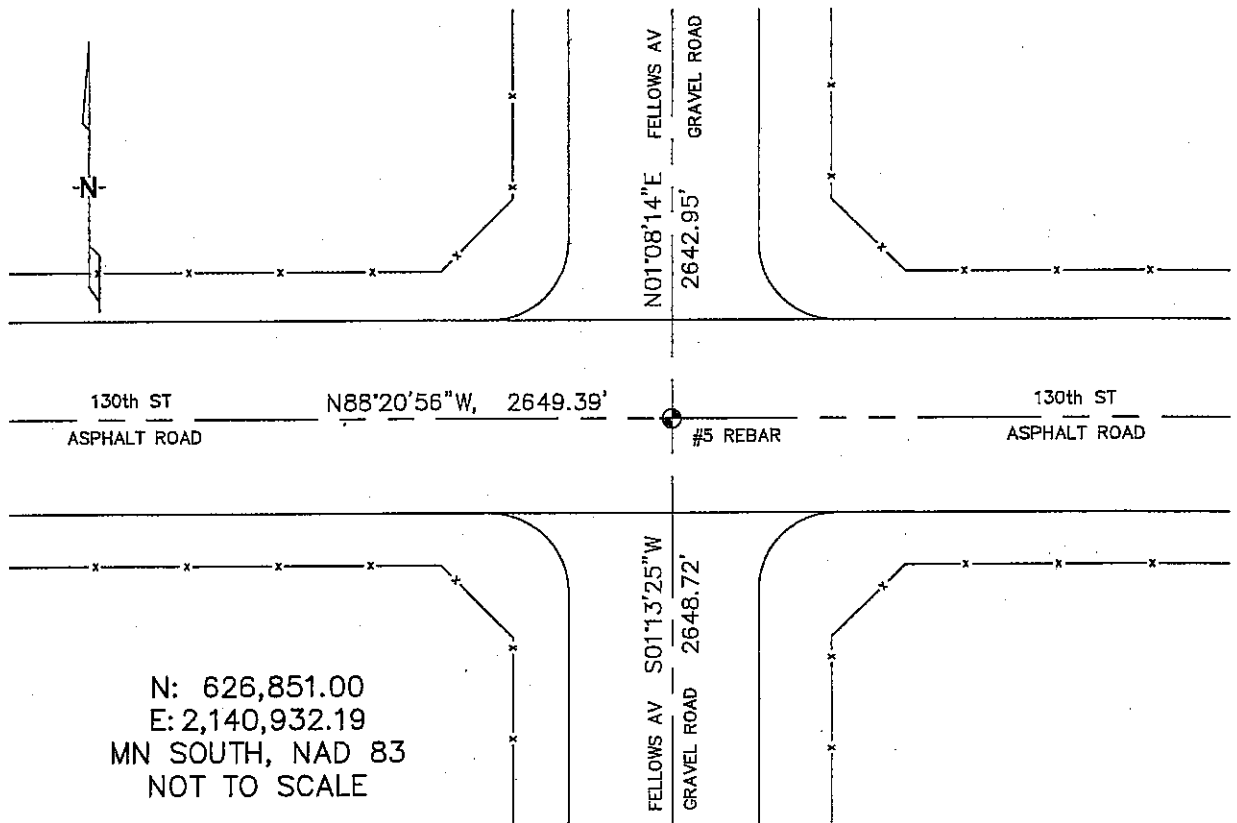
At the corner location shown on the sketch :

On 1/06/2006 found A #5 REBAR IN THE ASPHALT AT THE
INTERSECTION.

left monument as found, lowered monument, removed monument (explain)

On _____ set _____

Sketch of reference ties



Statement of evidence relative to this corner location is on back page

I hereby certify that this document and the data contained herein was prepared by me or under my direct supervision.

Thomas J. Jeff 7/10/06
 Thomas J. Jeff Date
 Registration No. 44563

- Land Surveyor, Professional Engineer
 County Surveyor, County Engineer

OFFICE OF THE COUNTY RECORDER

County of _____

I hereby certify that this document was filed in the Co. Recorders office at _____ M. on the _____ day of _____ A.D., 20

County Recorder _____
 By _____, Deputy

DOCUMENT NO. _____

STATEMENT OF EVIDENCE:

SOUTHEAST CORNER, SECTION 14, T. 104 N., R. 42 W.,
NOBLES COUNTY, MINNESOTA

1868 Jewett & Howe, US. Deputy Surveyors, monumented corner.

1/06/2006 Ulteig Engineers, Inc., Survey Crew, Brian Payne Party Chief, found
a #5 rebar at the C/L intersection of the asphalt and gravel roads.
Ties: N-2642.95' to E 1/4 corner, Section 14;
S-2648.72' to E 1/4 corner, Section 23;
W-2649.39' to S 1/4 corner, Section 14.