

CERTIFICATE OF LOCATION OF GOVERNMENT CORNER

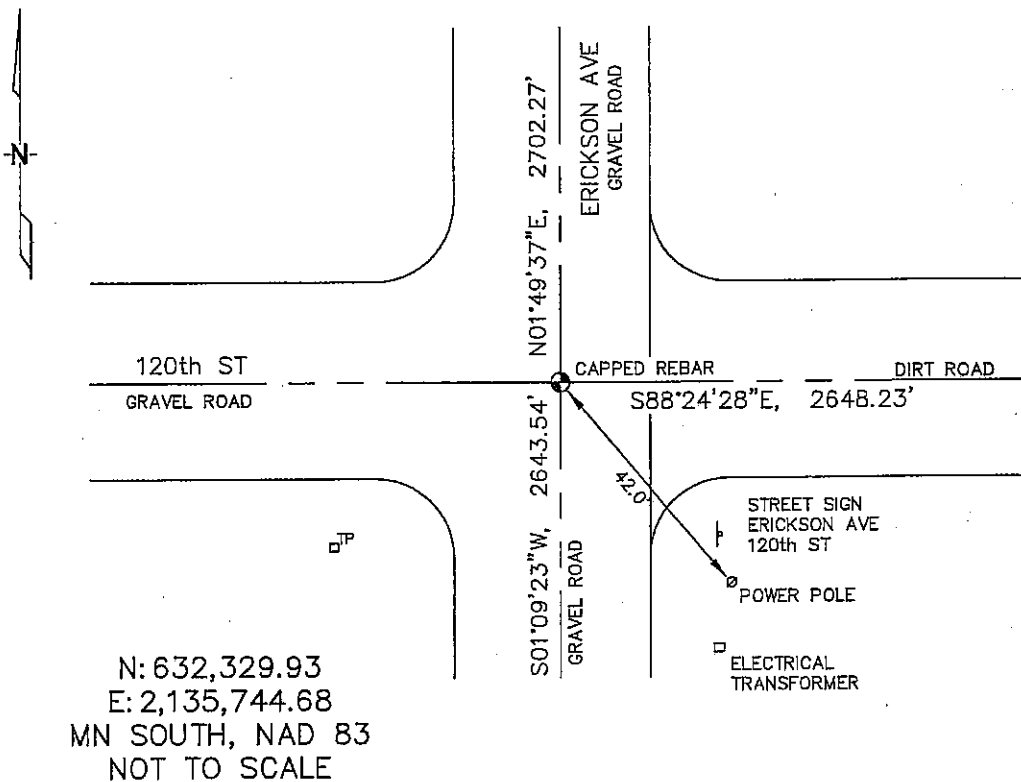
SOUTHWEST Corner of Section 11, Township 104, Range 42, 5TH P.M.

STATE OF MINNESOTA, County of NOBLES

At the corner location shown on the sketch :

- On 1/06/2006 found A REBAR WITH AN UNREADABLE CAP AT THE
C/L INTERSECTION OF THE GRAVEL ROADS.
- left monument as found, lowered monument, removed monument (explain)
- On _____ set _____

Sketch of reference ties



Statement of evidence relative to this corner location is on back page

I hereby certify that this document and the data contained herein was prepared by me or under my direct supervision.

Thomas V. Zepf
 Thomas V. Zepf

7/17/06
 Date

Registration No. 44563

- Land Surveyor, Professional Engineer
 County Surveyor, County Engineer

OFFICE OF THE COUNTY RECORDER

County of _____

I hereby certify that this document was filed in the Co. Recorders office at _____ M. on the _____ day of _____ A.D. , 20

County Recorder _____
 By _____, Deputy

DOCUMENT NO. _____

STATEMENT OF EVIDENCE:

SOUTHWEST CORNER, SECTION 11, T. 104 N., R. 42 W.,
NOBLES COUNTY, MINNESOTA

- 1868 Jewett & Howe, US. Deputy Surveyors, monumented corner.
- 1938 Nobles Co., found stone on corner, no ties.
- 1979 Nobles Co., found stone 18" down, placed bridge pin on top of stone.
Ties: SW-46.69' to nail & disc in power pole;
SE-42.98' to nail & disc in power pole.
- 2/21/2006 Ulteig Engineers, Inc., Survey Crew, Brian Payne Party Chief, found a rebar with an unreadable cap in the C/L intersection of the gravel roads.
Ties: SE-42.0' to power pole;
N-2702.27' to W 1/4 corner, Section 11;
E-2648.23' to S 1/4 corner, Section 11;
S-2643.54' to W 1/4 corner, Section 14.