

CERTIFICATE OF LOCATION OF GOVERNMENT CORNER

SOUTHWEST Corner of Section 14, Township 104, Range 42, 5TH P.M.

STATE OF MINNESOTA, County of NOBLES

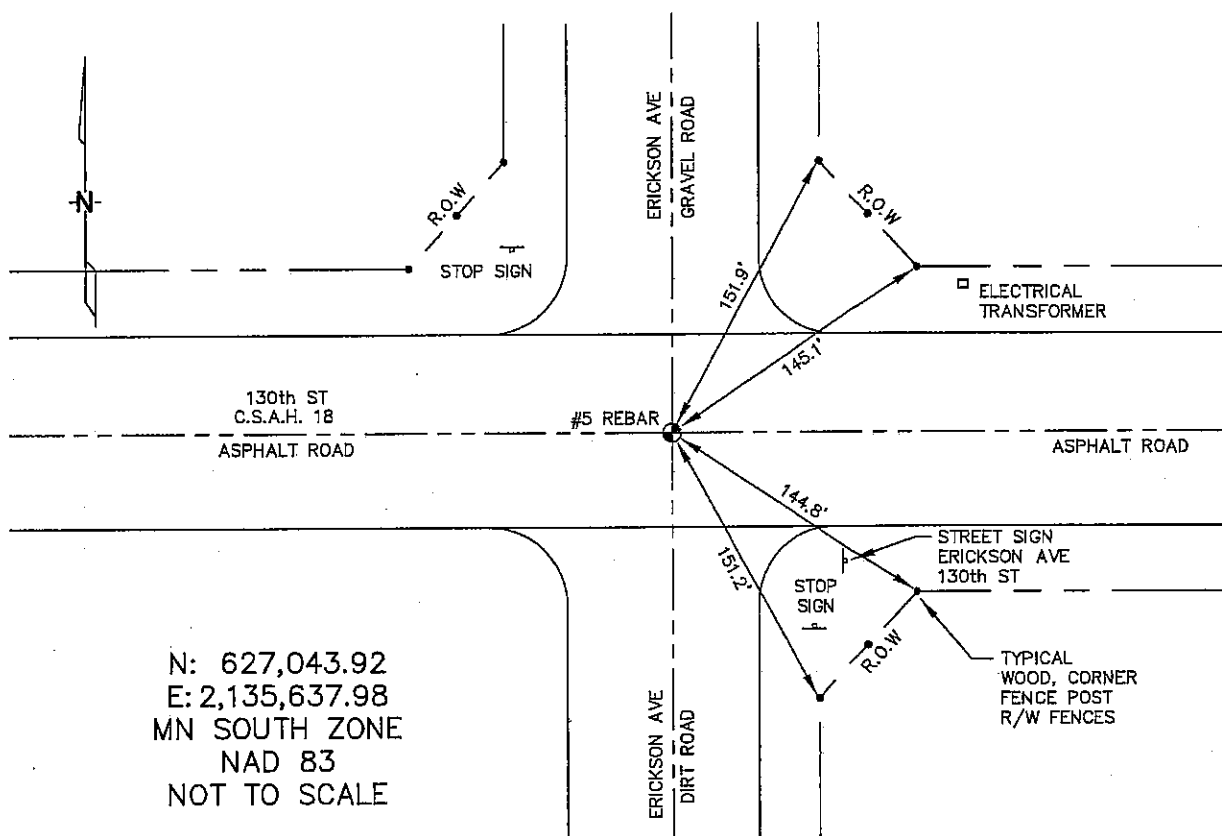
At the corner location shown on the sketch :

On 1/06/2006 found A # 5 REBAR AT THE C/L INTERSECTION.

left monument as found, lowered monument, removed monument (explain)

On _____ set _____

Sketch of reference ties



N: 627,043.92
 E: 2,135,637.98
 MN SOUTH ZONE
 NAD 83
 NOT TO SCALE

Statement of evidence relative to this corner location is on back page

I hereby certify that this document and the data contained herein was prepared by me or under my direct supervision.

Thomas V. Zeff

 Thomas V. Zeff
 Registration No. 44563

7/10/06
 Date

- Land Surveyor, Professional Engineer
 County Surveyor, County Engineer

OFFICE OF THE COUNTY RECORDER

County of _____

I hereby certify that this document was filed in the Co. Recorders office at _____ .M. on the day of _____ A.D. , 20

County Recorder _____
 By _____, Deputy

DOCUMENT NO. _____

STATEMENT OF EVIDENCE:

SOUTHWEST CORNER, SECTION 14, T. 104 N., R. 42 W.,
NOBLES COUNTY, MINNESOTA

- 1868 Jewett & Howe, US. Deputy Surveyors, monumented corner.
- 1901 Nobles Co., found a stone on the corner, no ties.
- 1912 Nobles Co., set a stone on the corner, no ties.
- 1937 Nobles Co., found an iron pin on the corner, no ties.
- 1962 Nobles Co., found a wood stake on the corner, no ties.
- 1970 Nobles Co., found a 1" iron pipe on the corner, no ties.
- 1991 Nobles Co., found 1" iron pipe, no ties.
- 1996 Nobles Co., placed a 3/8" rebar on corner.
Ties: NW-59.07' to nail & disc on power pole;
SE-52.04' to chiseled "C" in C/L of apron concrete;
NE-54.77' to chiseled "X" in C/L apron concrete.
- 1/06/2006 Ulteig Engineers, Inc., Survey Crew, Brian Payne Party Chief, found a #5 rebar at the C/L intersection of the roads.
Ties: NE-151.9' to wood, corner post;
NE-145.1' to wood, corner, fence post;
SE-144.8' to wood, corner, fence post;
SE-151.2' to wood, corner, fence post.