

### CERTIFICATE OF LOCATION OF GOVERNMENT CORNER

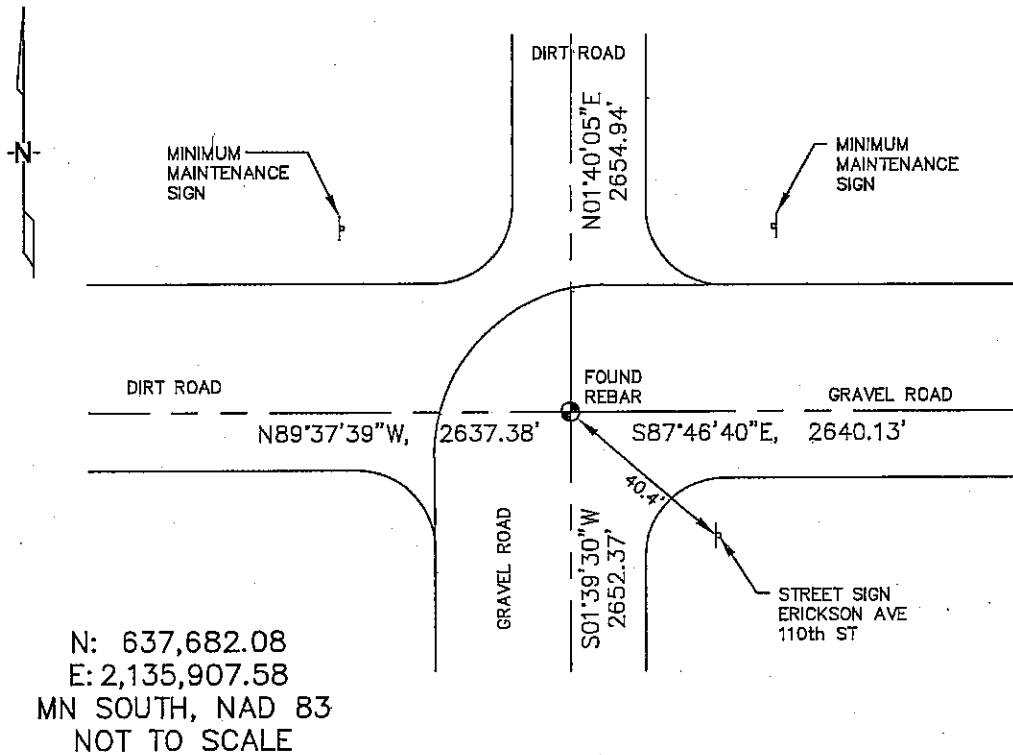
SOUTHWEST Corner of Section 2, Township 104, Range 42, 5TH P.M.

STATE OF MINNESOTA, County of NOBLES

At the corner location shown on the sketch :

- On 1/06/2006 found \_\_\_\_\_
- left monument as found,     lowered monument,     removed monument (explain)
- On \_\_\_\_\_ set A REBAR AT THE C/L INTERSECTION OF THE GRAVEL & DIRT ROADS.

Sketch of reference ties



Statement of evidence relative to this corner location is on back page

I hereby certify that this document and the data contained herein was prepared by me or under my direct supervision.

*Thomas V. Zeff*  
\_\_\_\_\_  
Thomas V. Zeff  
Registration No. 44563

Date 7/10/08

- Land Surveyor,     Professional Engineer
- County Surveyor,     County Engineer

#### OFFICE OF THE COUNTY RECORDER

County of \_\_\_\_\_

I hereby certify that this document was filed in the Co. Recorders office at \_\_\_\_\_ M. on the day of \_\_\_\_\_ A.D. , 20

County Recorder \_\_\_\_\_  
By \_\_\_\_\_, Deputy

DOCUMENT NO. \_\_\_\_\_

STATEMENT OF EVIDENCE:

SOUTHWEST CORNER, SECTION 2, T. 104 N., R. 42 W.,  
NOBLES COUNTY, MINNESOTA

1868 Jewett & Howe, US. Deputy Surveyors, monumented corner.

1/06/2006 Ulteig Engineers, Inc., Survey Crew, Brain Payne Party Chief,  
found a rebar on the C/L of a gravel road.

Ties: N-2654.94' to W 1/4 corner, Section 2;  
S-2652.37' to W 1/4 corner, Section 11;  
E-2640.12' to N 1/4 corner, Section 11;  
W-2637.38' to N 1/4 corner, Section 10;  
SE-40.4' to "street sign" post.