

CERTIFICATE OF LOCATION OF GOVERNMENT CORNER

SOUTHWEST Corner of Section 26, Township 104, Range 42, 5TH P.M.

STATE OF MINNESOTA, County of NOBLES

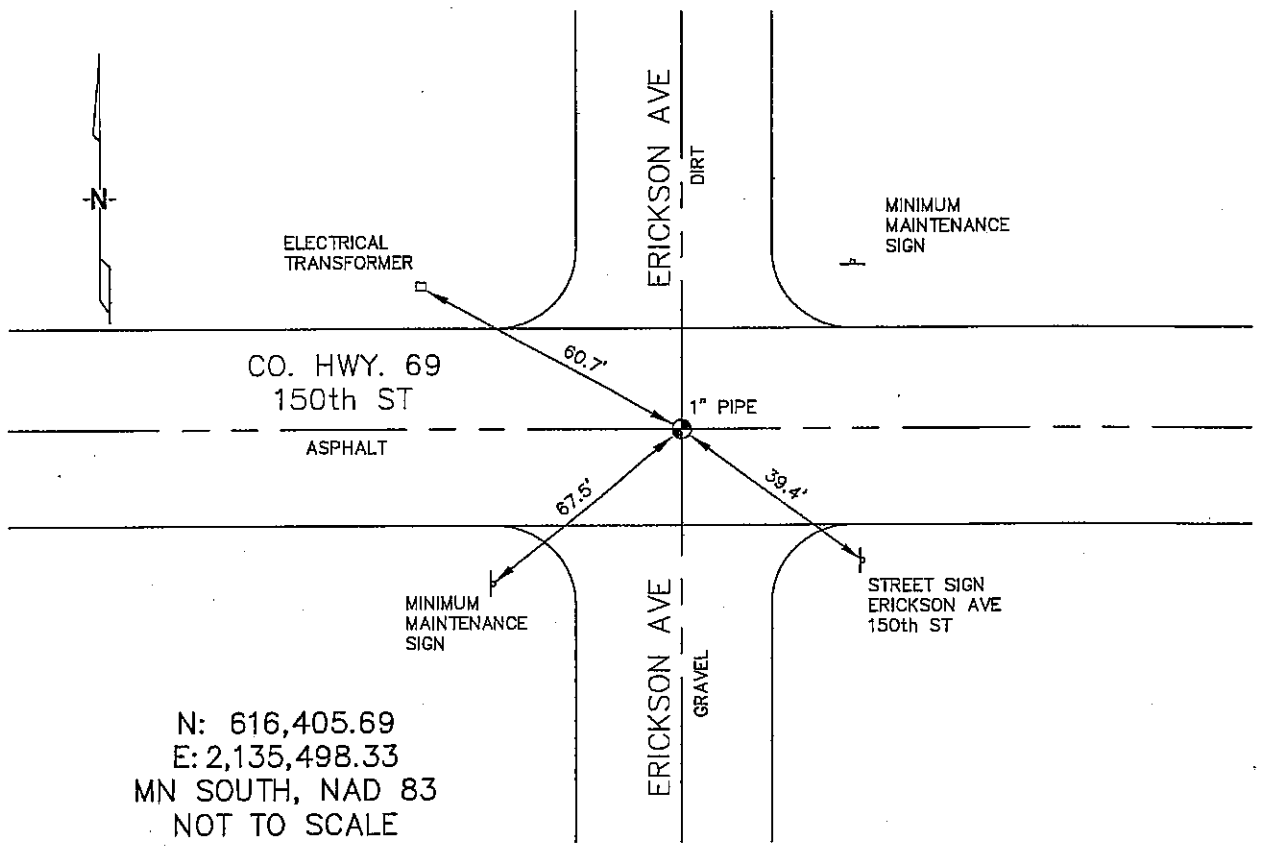
At the corner location shown on the sketch :

On 1/09/2006 found A 1" IRON PIPE AT THE C/L INTERSECTION
OF THE TWO ROADS.

left monument as found, lowered monument, removed monument (explain)

On _____ set _____

Sketch of reference ties



Statement of evidence relative to this corner location is on back page

I hereby certify that this document and the data contained herein was prepared by me or under my direct supervision.

Thomas V. Zeff 7/11/06
Thomas V. Zeff Date

Registration No. 44563

Land Surveyor, Professional Engineer

County Surveyor, County Engineer

OFFICE OF THE COUNTY RECORDER

County of _____

I hereby certify that this document was filed in the Co. Recorders office at _____ M. on the day of _____ A.D. , 20

County Recorder _____

By _____, Deputy

DOCUMENT NO. _____

STATEMENT OF EVIDENCE:

SOUTHWEST CORNER, SECTION 26, T. 104 N., R. 42 W.,
NOBLES COUNTY, MINNESOTA

- 1868 Jewett & Howe, US. Deputy Surveyors, monumented corner.
- 1900 Nobles Co., found stone on corner, no ties.
- 2/15/2000 Madsen Land Surveying, found a 1" iron pin, 4" deep.
Ties: NW-60.7' to SE corner, electrical box;
SW-67.5' to C/L of E post of "minimum maintenance sign";
NE-73.2' to C/L of W post of "minimum maintenance sign".
- 1/09/2006 Ulteig Engineers, Inc., Survey Crew, Brian Payne Party Chief, found
a 1" iron pipe at the C/L intersection of 150th Street & Erickson Ave.
Ties: NW-60.6' to SE corner of electrical transformer box;
SW-67.6' to "minimum maintenance sign" post;
SE-39.4' to "street sign" post.