

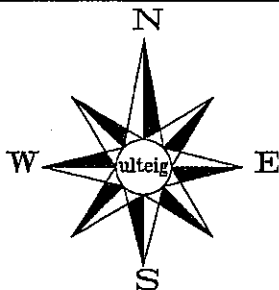
CERTIFICATE OF LOCATION OF GOVERNMENT CORNER

SOUTHWEST Corner of Section 3 Township 104N Range 42W 5th P.M.
 STATE OF MINNESOTA, County of NOBLES

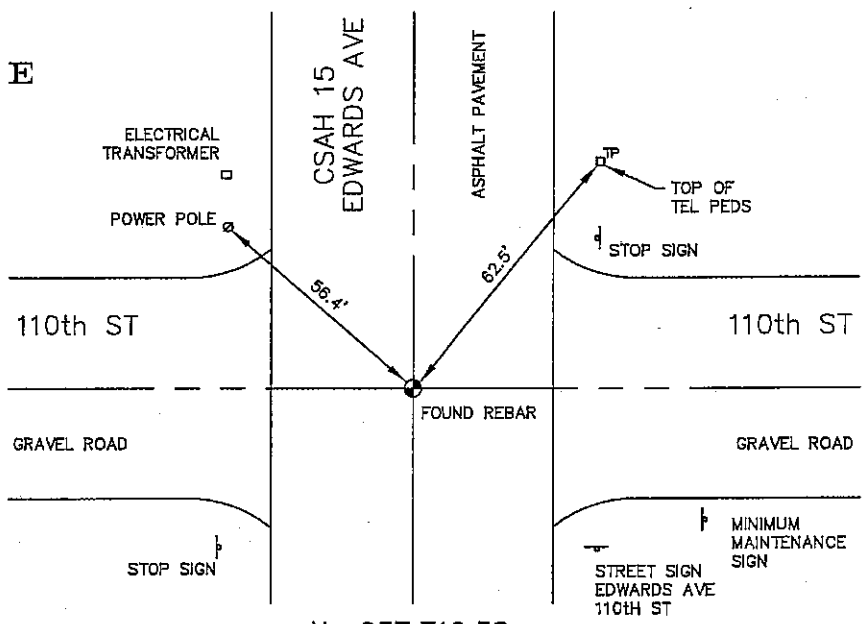
At the corner location shown on the sketch:

- On 03/06/2006 found a REBAR AT C/L INTERSECTION.
DATE

- left monument as found, lowered monument, removed monument (explain)
- On _____ placed a _____
DATE



SKETCH OF REFERENCE TIES



N: 637,716.38
 E: 2,130,632.93
 MN SOUTH, NAD 83

NOT TO SCALE
 BEARING SYSTEM IS BASED ON MN STATE PLANE COORDINATE SYSTEM, SOUTH ZONE.

A23

Statement of evidence relative to this corner location is on back of page.

I hereby certify that this document and the data contained herein was prepared by me or under my direct supervision.

 Thomas V. Zeff
 DATE 5/1/06

Registration No. 44563
 Land Surveyor, Professional Engineer
 County Surveyor, County Engineer

OFFICE OF THE COUNTY RECORDER
 County of _____

I hereby certify that this document was filed in the Co. Recorders office at _____ M. on the _____ day of _____ A.D., 20____

County Recorder _____

By _____, Deputy

DOCUMENT NO. _____

STATEMENT OF EVIDENCE:

SOUTHWEST CORNER, SECTION 3, T.104N., R.42W.,
NOBLES COUNTY, MINNESOTA

1868 JEWETT & HOWE, US. DEPUTY SURVEYORS, SUBDIVIDED SECTION.
1900 NOBLES CO., STONE SET AT CORNER.
1915 NOBLES CO., STONE FOUND.
1924 NOBLES CO., STONE FOUND.
1937 NOBLES CO., STONE FOUND.
1951 NOBLES CO., STONE FOUND; IRON PIN PLACED.
1962 NOBLES CO., IRON PIN FOUND; WOOD STAKE PLACED.
1980 NOBLES CO., IRON PIN FOUND
1996 NOBLES CO., IRON PIN PLACED; THEN PK-NAIL PLACED IN ASPHALT
TIES: NW N&D IN PP, 56.62'
NE TOP BOLT, STOP SIGN, 55.20'
SE BOTTOM BOLT S. POST MIN MAIN SIGN, 54.35'

03/06/2006 ULTEIG ENGINEERS, INC, SURVEY CREW, BRIAN PAYNE, PARTY CHIEF
FOUND A REBAR AT THE C/L INTERSECTION.
Ties: NW-56.4' TO POWER POLE;
NE-62.5' TO TOP, CENTER OF TELEPHONE PEDESTAL;