

CERTIFICATE OF LOCATION OF GOVERNMENT CORNER

SOUTHWEST Corner of Section 35, Township 104, Range 42, 5TH P.M.

STATE OF MINNESOTA, County of NOBLES

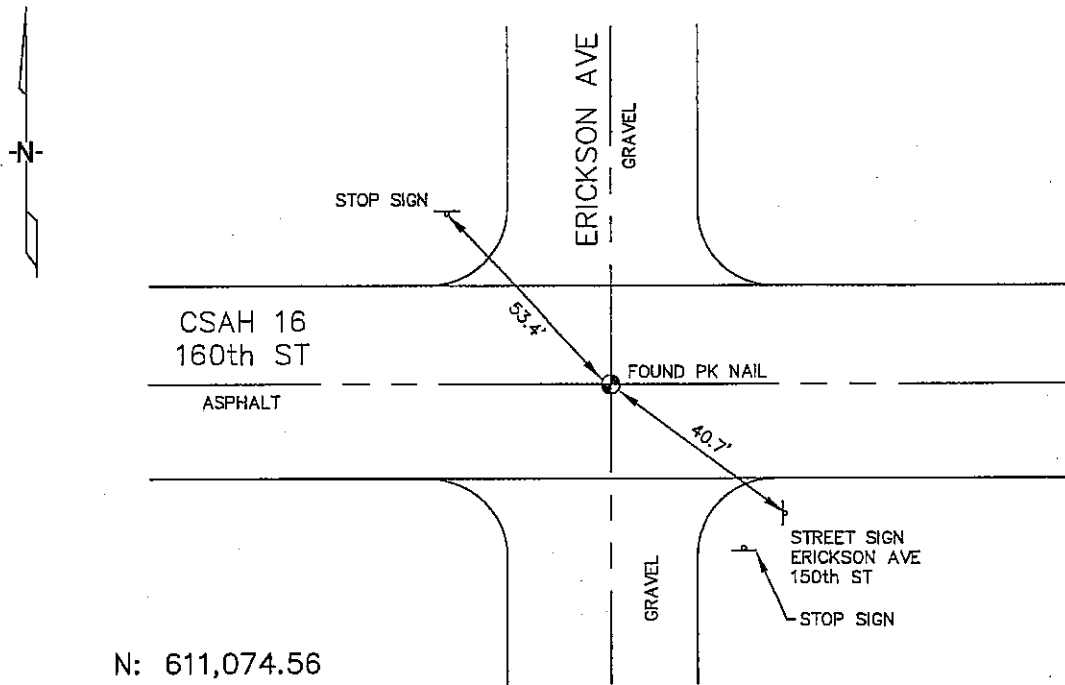
At the corner location shown on the sketch :

On 2/21/2006 found A PK NAIL AT THE C/L INTERSCETION.

left monument as found, lowered monument, removed monument (explain)

On _____ set _____

Sketch of reference ties



N: 611,074.56
E: 2,135,465.85
MN SOUTH, NAD 83
NOT TO SCALE

Statement of evidence relative to this corner location is on back page

A39

I hereby certify that this document and the data contained herein was prepared by me or under my direct supervision.

Thomas V. Zeff
Thomas V. Zeff
Registration No. 44563 7/7/06 Date

- Land Surveyor, Professional Engineer
- County Surveyor, County Engineer

OFFICE OF THE COUNTY RECORDER

County of _____

I hereby certify that this document was filed in the Co. Recorders office at _____ M. on the day of _____ A.D. , 20

County Recorder _____
By _____, Deputy

DOCUMENT NO. _____

STATEMENT OF EVIDENCE:

SOUTHWEST CORNER, SECTION 35, T. 104 N., R. 42 W.,
NOBLES COUNTY, MINNESOTA

- 1867 Thomas B. Walker, US. Deputy Surveyor, monumented township south line.
- 1901 Nobles Co., found a stone on the corner; no ties.
- 1922 Nobles Co., found stone, no ties.
- 1943 Nobles Co., found stone, no ties.
- 1967 Nobles Co., found a pipe on the corner, left it as is.
Ties: SE-62.8' to nail & disc in top of corner fence post;
SW-68.4' to nail & disc in corner fence post;
NW-57.25' to nail & disc in power pole.
- 2/21/2006 Uiteig Engineers, Inc., Survey Crew, Brain Payne Party Chief, found a
PK nail at the C/L intersection.
Ties: SE-40.7 to "street sign" post;
NW-53.4' to "stop sign" post.