

CERTIFICATE OF LOCATION OF GOVERNMENT CORNER

SOUTHWEST Corner of Section 4, Township 104, Range 42, 5TH P.M.

STATE OF MINNESOTA, County of NOBLES

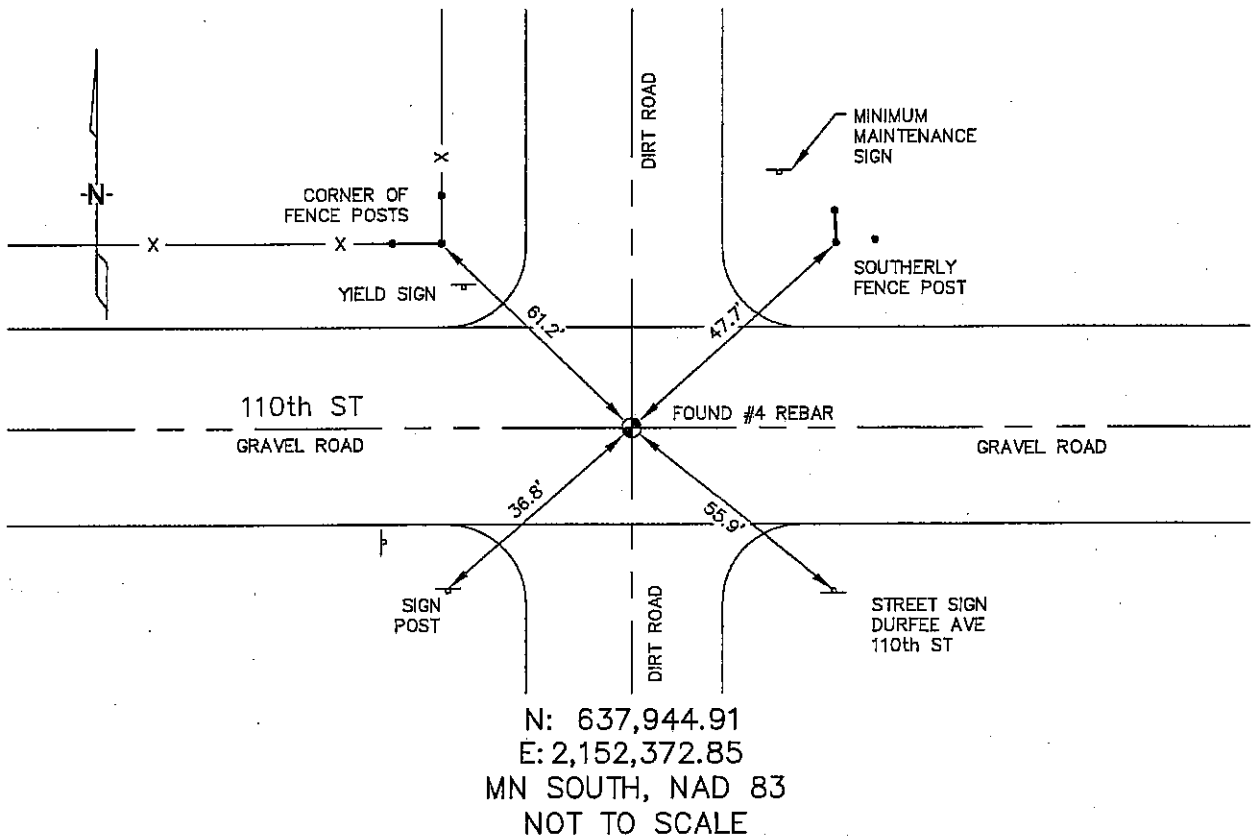
At the corner location shown on the sketch :

On 2/22/2006 found A #4 REBAR AT C/L INTERSECTION
OF THE TWO ROADS.

left monument as found, lowered monument, removed monument (explain)

On _____ set _____

Sketch of reference ties



Statement of evidence relative to this corner location is on back page

I hereby certify that this document and the data contained herein was prepared by me or under my direct supervision.

Thomas V. Zeff
 Thomas V. Zeff

7/6/06
 Date

Registration No. 44563

- Land Surveyor, Professional Engineer
 County Surveyor, County Engineer

OFFICE OF THE COUNTY RECORDER

County of _____

I hereby certify that this document was filed in the Co. Recorders office at _____ .M. on the day of _____ A.D. , 20

County Recorder _____

By _____, Deputy

DOCUMENT NO. _____

STATEMENT OF EVIDENCE:

SOUTHWEST CORNER, SECTION 4, T. 104 N., R. 42 W.,
NOBLES COUNTY, MINNESOTA

- 1868 Jewett & Howe, US. Deputy Surveyors, monumented corner.
- 1900 Nobles Co., found a stone on the corner, no ties.
- 1979 Nobles Co., found stone, 4" below grade, placed the top 1" of bridge pin on top of stone.
Ties: NE-47.97' to nail & disc in corner of fence post;
SW-64.46' to nail & disc in corner of fence post;
SE-61.78' to nail & disc in corner of fence post;
NW-62.23' to nail & disc in corner of fence post.
- 2/22/2006 Uiteig Engineers, Inc., Survey Crew, Brian Payne Party Chief, found a #4 rebar at the C/L intersection of the two roads.
Ties: NE-47.7' to southerly fence post;
SE-55.9' to "street sign" post;
SW-36.8' to sign post;
NW-61.2' to corner of fence posts.