

## CERTIFICATE OF LOCATION OF GOVERNMENT CORNER

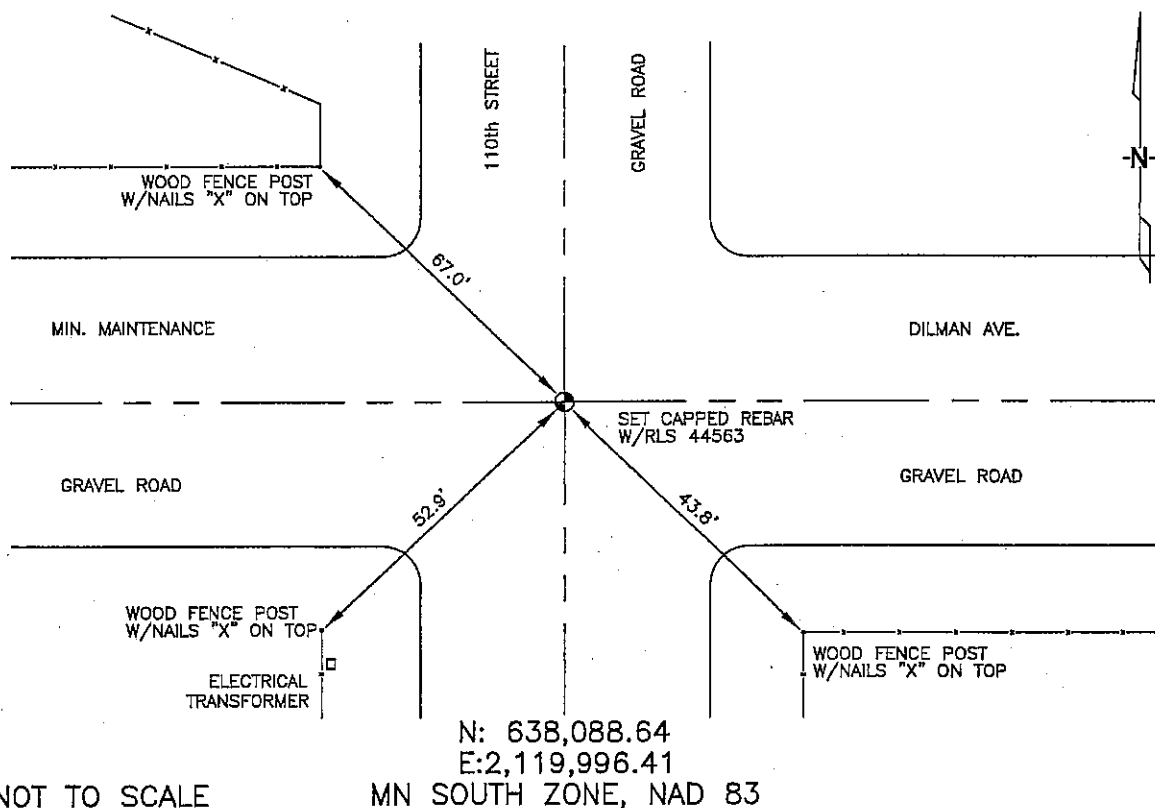
SOUTHWEST Corner of Section 5, Township 104, Range 42, 5TH P.M.

STATE OF MINNESOTA, County of NOBLES

At the corner location shown on the sketch :

- On \_\_\_\_\_ found \_\_\_\_\_
- left monument as found,  lowered monument,  removed monument (explain)
- On 3/09/2006 set 5/8" REBAR WITH CAP: RLS 44563.  
AT INTERSECTION OF GRAVEL ROADS.

Sketch of reference ties



Statement of evidence relative to this corner location is on back page

D73

I hereby certify that this document and the data contained herein was prepared by me or under my direct supervision.

*Thomas J. Jeff*  
 \_\_\_\_\_  
 Signature

5/1/06  
 \_\_\_\_\_  
 Date

Registration No. 44563

Land Surveyor,  Professional Engineer

County Surveyor,  County Engineer

### OFFICE OF THE COUNTY RECORDER

County of \_\_\_\_\_

I hereby certify that this document was filed in the Co. Recorders office at \_\_\_\_\_ .M. on the day of \_\_\_\_\_ A.D. , 20

County Recorder \_\_\_\_\_

By \_\_\_\_\_ , Deputy

DOCUMENT NO. \_\_\_\_\_

STATEMENT OF EVIDENCE:

SOUTHWEST CORNER, SECTION 5, T. 104 N., R. 42 W.,  
NOBLES COUNTY, MINNESOTA

- 1868 Jewett & Howe, US. Deputy Surveyors, monumented corner.
- 1915 Nobles Co., stone set on corner, no ties.
- 1935 Nobles Co., found stone, no ties.
- 3/09/2006 Uiteig Engineers, Inc., Survey Crew, Brian Payne Party Chief, found nothing. Set a 5/8" rebar with cap: RLS 44563 at intersection of gravel roads.  
Ties: NW-67.0' to nailed "X" on corner, fence post;  
SW-52.9' to nailed "X" on wood, fence post;  
SE-43.8' to nailed "X", on wood fence post.