

CERTIFICATE OF LOCATION OF GOVERNMENT CORNER

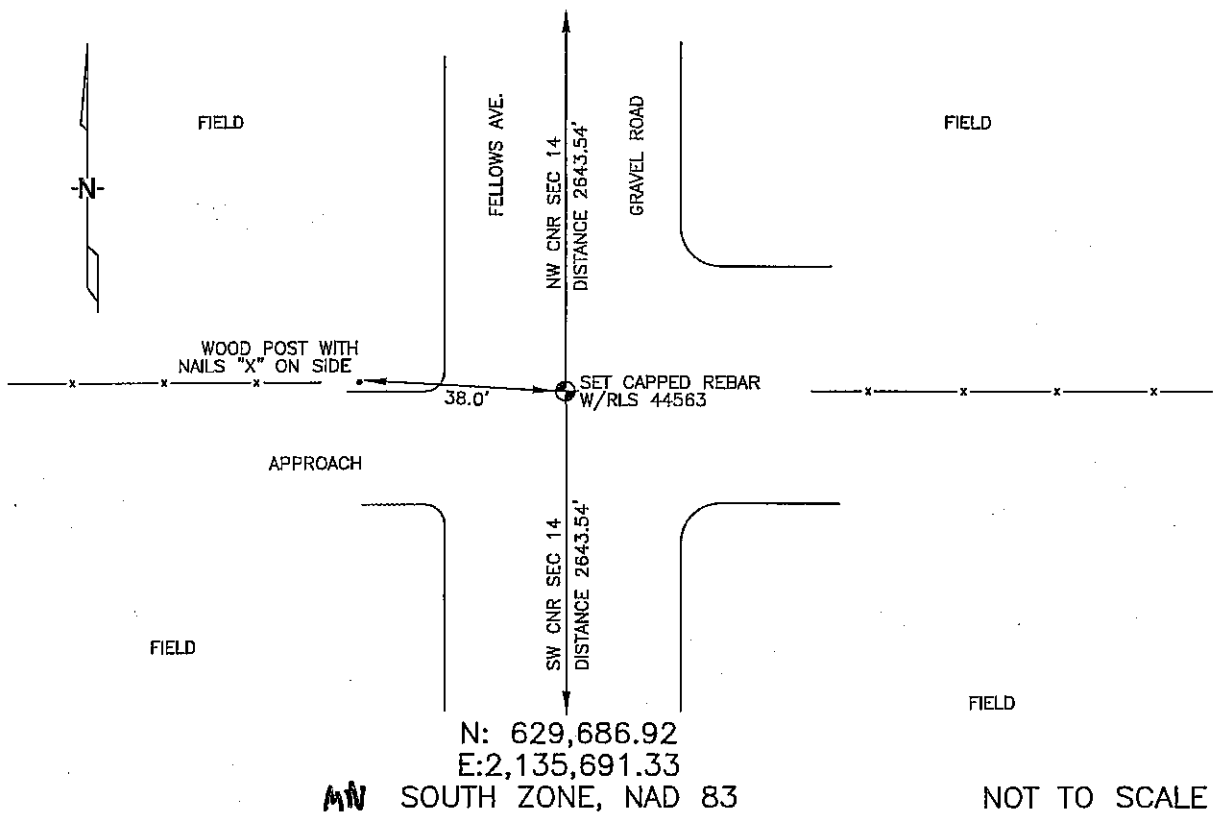
WEST 1/4 Corner of Section 14, Township 104, Range 42, 5TH P.M.

STATE OF MINNESOTA, County of Nobles

At the corner location shown on the sketch :

- On _____ found _____
- left monument as found, lowered monument, removed monument (explain)
- On 3/9/2006 set 5/8" Rebar, Capped: RLS 44563

Sketch of reference ties



Statement of evidence relative to this corner location is on back page

I hereby certify that this document and the data contained herein was prepared by me or under my direct supervision.

Therese V. Zell 5/1/06
 Signature Date

Registration No. 44563

- Land Surveyor, Professional Engineer
- County Surveyor, County Engineer

OFFICE OF THE COUNTY RECORDER

County of _____

I hereby certify that this document was filed in the Co. Recorders office at _____ .M. on the day of _____ A.D. , 20

County Recorder _____
 By _____ , Deputy

DOCUMENT NO. _____

STATEMENT OF EVIDENCE:

WEST 1/4 CORNER, SECTION 14, T. 104 N., R. 42 W.,
NOBLES COUNTY, MINNESOTA

1868

JEWETT & HOWE, U.S. DEPUTY SURVEYORS
SUBDIVIDED TOWNSHIP INTO SECTIONS.

1912

IRON PIN SET ON CORNER, NO TIES.

3/09/2006

ULTEIG ENGINEERS, INC., SURVEY CREW
BRIAN PAYNE PARTY CHIEF, FOUND NOTHING.
SET 5/8" REBAR W/ CAP: RLS 44563 IN
GRAVEL ROAD.

TIES: W - 38.0' TO WOOD FENCE POST WITH
"X" MARK MADE FROM BETT NAILS.
N - 2643.54' TO NW CORNER.
S - 2643.54' TO SW. CORNER