

CERTIFICATE OF LOCATION OF GOVERNMENT CORNER

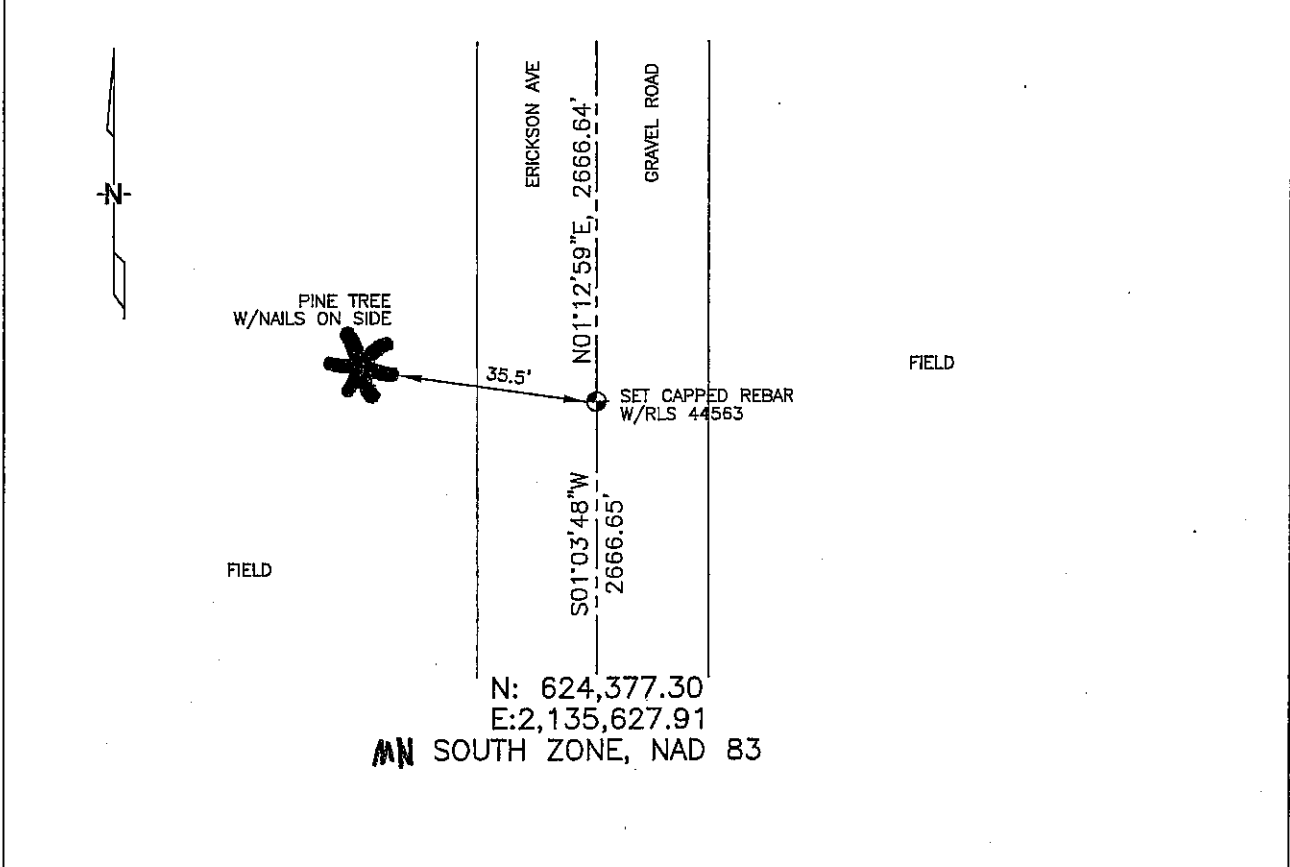
WEST 1/4 Corner of Section 23, Township 104, Range 42, 5TH P.M.

STATE OF MINNESOTA, County of NOBLES

At the corner location shown on the sketch :

- On _____ found _____
- left monument as found, lowered monument, removed monument (explain)
- On 3/9/2006 set 5/8" REBAR W/CAP: PLS 44563.

Sketch of reference ties



Statement of evidence relative to this corner location is on back page

I hereby certify that this document and the data contained herein was prepared by me or under my direct supervision.

Thomas J. Zell 5/1/06
 Signature Date

Registration No. 44563

Land Surveyor, Professional Engineer
 County Surveyor, County Engineer

OFFICE OF THE COUNTY RECORDER
 County of _____

I hereby certify that this document was filed in the Co. Recorders office at _____ .M. on the _____ day of _____ A.D. , 20 _____

County Recorder _____
 By _____, Deputy

DOCUMENT NO. _____

STATEMENT OF EVIDENCE:

WEST 1/4 CORNER, SECTION 23, T. 104 N., R. 42 W.,
NOBLES COUNTY, MINNESOTA

- 1868 JEWETT & HOWE, U.S. DEPUTY SURVEYORS, SUBDIVIDED TOWNSHIP.
- 1901 MURRAY CO. HIGHWAY DEPT. SET A STONE ON CORNER. NO TIES.
- 3/9/2006 ULTEIG ENGINEERS, INC., SURVEY CREW, BRIAN PAYNE, PARTY CHIEF
FOUND NOTHING; SET 5/8" REBAR WITH CAP: RLS 44563 IN GRAVEL
ROAD.
TIES: NW-35.5' TO NAILED "X" ON SIDE OF PINE TREE, *NE SIDE*;
N-2666.64' TO NW CORNER, SECTION 23;
S-2666.65' TO SW CORNER, SECTION 23.