

CERTIFICATE OF LOCATION OF GOVERNMENT CORNER

WEST 1/4 Corner of Section 26, Township 104, Range 42 5TH P.M.

STATE OF MINNESOTA, County of NOBLES

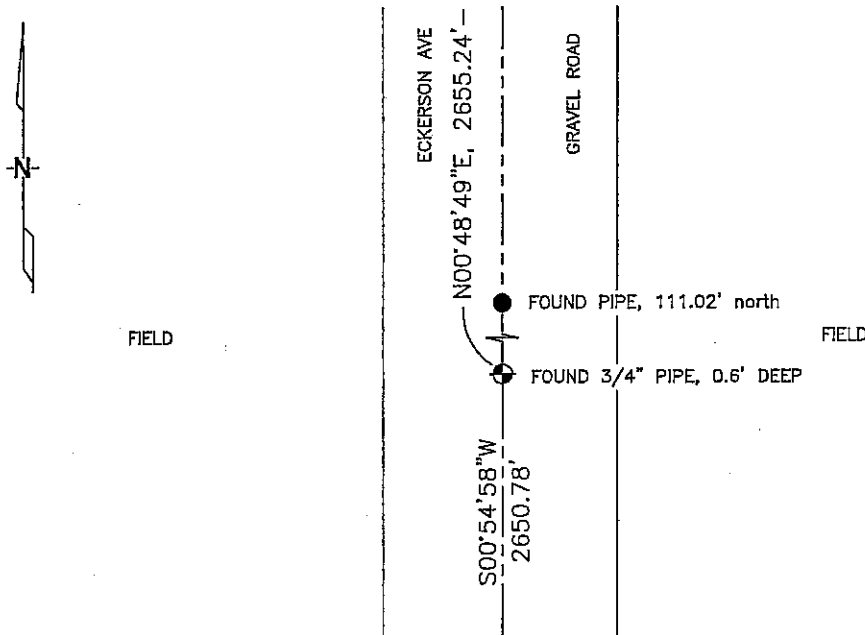
At the corner location shown on the sketch :

On 3/8/2006 found 3/4" IRON PIPE, 0.6' DEEP.

left monument as found, lowered monument, removed monument (explain)

On _____ set _____

Sketch of reference ties



N: 619,056.13
E: 2,135,540.71
MN SOUTH ZONE, NAD 83

Statement of evidence relative to this corner location is on back page

I hereby certify that this document and the data contained herein was prepared by me or under my direct supervision.

James V. Jeff 5/10/04
Signature Date

Registration No. 44563

Land Surveyor, Professional Engineer

County Surveyor, County Engineer

OFFICE OF THE COUNTY RECORDER

County of _____

I hereby certify that this document was filed in the Co. Recorders office at _____ M. on the day of _____ A.D. , 20

County Recorder _____

By _____, Deputy

DOCUMENT NO. _____

STATEMENT OF EVIDENCE:

WEST 1/4 CORNER, SECTION 26, T. 104 N., R. 42 W.,
NOBLES COUNTY, MINNESOTA

- 1868 JEWETT & HOWE, U.S. DEPUTY SURVEYORS,
MONUMENTED CORNER.
- 1901 MURRAY CO. HIGHWAY DEPT. SET A STONE ON CORNER; NO TIES.
- 2/15/2000 MADSEN LAND SURVEYING, FOUND 12"x12" STONE (12" DEEP)
WITH WOOD STAKE ON SOUTH SIDE.
DRILLED HOLE ON STONE & SET 3/4" IRON PIPE INTO STONE
(4" DEEP); NO TIES.
- 3/8/2006 ULTEIG ENGINEERS, INC., SURVEY CREW, BRIAN PAYNE PARTY CHIEF,
FOUND A 3/4" IRON PIPE IN GRAVEL ROAD.
TIES: N-2655.24' TO NW CORNER, SECTION 26;
S-2650.78' TO SW CORNER, SECTION 26.