

### CERTIFICATE OF LOCATION OF GOVERNMENT CORNER

WEST 1/4 Corner of Section 3, Township 104, Range 42, 5TH P.M.

STATE OF MINNESOTA, County of NOBLES

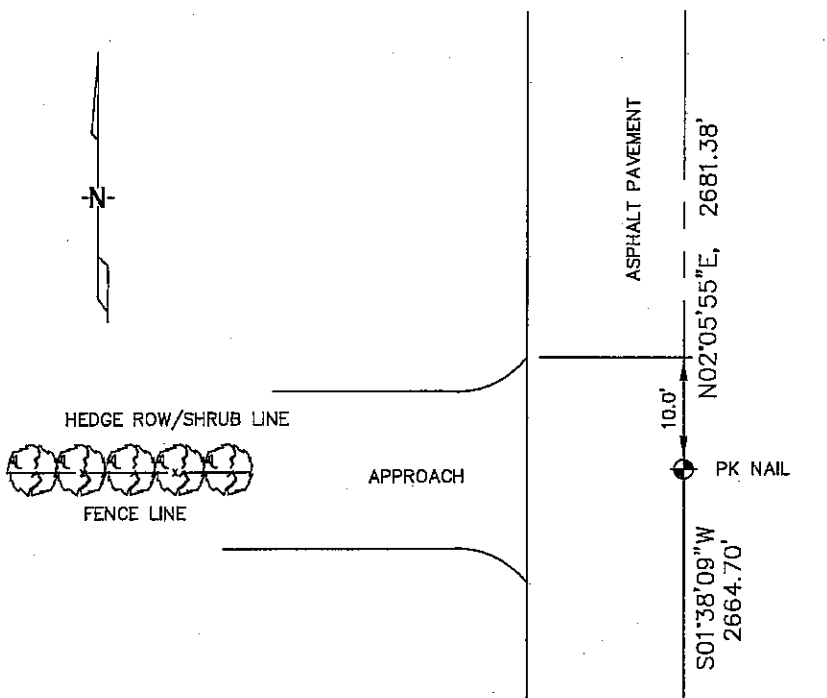
At the corner location shown on the sketch :

On 2/23/2006 found PK NAIL IN C/L OF ROAD, OPPOSITE A FENCE  
AND HEDGE ROW RUNNING WEST.

left monument as found,  lowered monument,  removed monument (explain)

On \_\_\_\_\_ set \_\_\_\_\_

#### Sketch of reference ties



N: 640,379.99  
 E: 2,130,709.00  
 MN SOUTH, NAD 83  
 NOT TO SCALE

Statement of evidence relative to this corner location is on back page

A22

I hereby certify that this document and the data contained herein was prepared by me or under my direct supervision.

Thomas J. Zell 7/6/06  
 Thomas J. Zell Date  
 Registration No. 44563

- Land Surveyor,  Professional Engineer  
 County Surveyor,  County Engineer

#### OFFICE OF THE COUNTY RECORDER

County of \_\_\_\_\_

I hereby certify that this document was filed in the Co. Recorders office at \_\_\_\_\_ M. on the day of \_\_\_\_\_ A.D., 20

County Recorder \_\_\_\_\_

By \_\_\_\_\_, Deputy

DOCUMENT NO. \_\_\_\_\_

STATEMENT OF EVIDENCE:

WEST 1/4 CORNER, SECTION 3, T. 104 N., R. 42 W.,  
NOBLES COUNTY, MINNESOTA

- 1868 Jewett & Howe, US. Deputy Surveyors, monumented corner.
- 1915 Nobles Co., found stone on corner; no ties.
- 1924 Nobles Co., found stone, no ties.
- 1951 Nobles Co., found stone, placed a wood stake on top of stone;  
no ties.
- 1962 Nobles Co., found stake, no ties.
- 1980 Nobles Co., found USGS. pin, no ties.
- 1996 Nobles Co., placed an iron pin on corner; placed a 1-3/4" long PK  
nail in asphalt above corner.  
Ties: NE-51.98' to 2"x2" wood hub;  
SE-51.16' to 2"x2" wood hub;  
WSW-47.63' to 2"x2" wood hub;  
NW-56.15' to 2"x2" wood hub;  
WSW-34.5' to nail in a C.M.P. at fence entrance;  
NW-44.9' to nail in C.M.P. at fence entrance.
- 2/23/2006 Ulteig Engineers, Inc., Survey Crew, Brian Payne Party Chief found a  
PK nail in the C/L of the asphalt pavement.  
Ties: N-10.0 to N edge of westerly field approach;  
N-2681.38' to NW corner, Section 3;  
S-2664.70' to SW corner, Section 3.