

CERTIFICATE OF LOCATION OF GOVERNMENT CORNER

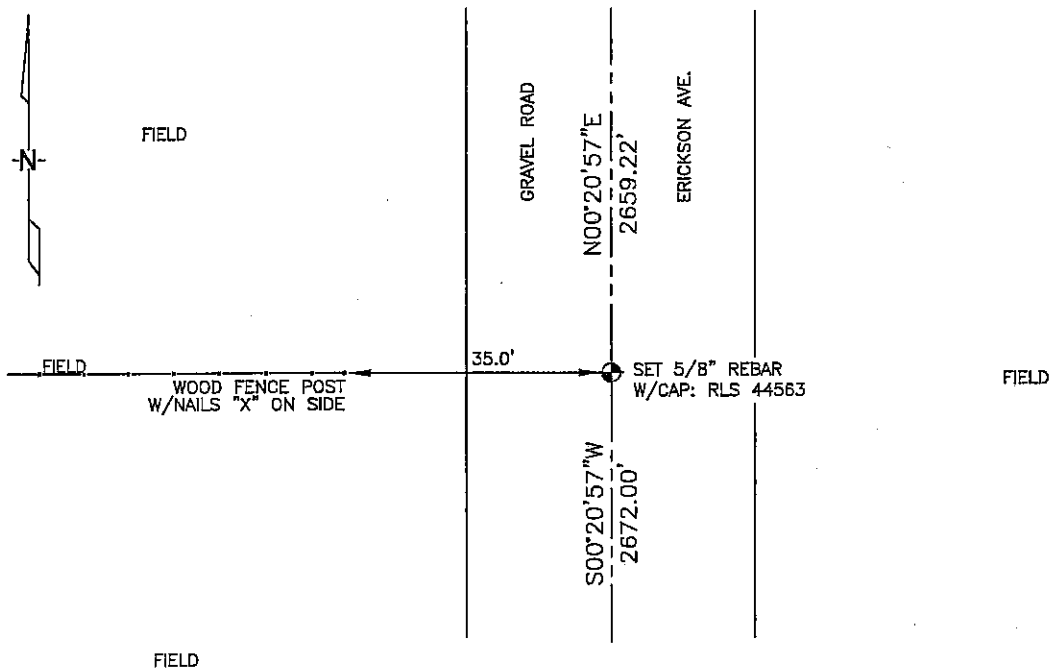
WEST 1/4 Corner of Section 35, Township 104, Range 42, 5TH P.M.

STATE OF MINNESOTA, County of NORBES

At the corner location shown on the sketch :

- On _____ found _____
- left monument as found, lowered monument, removed monument (explain)
- On 03/08/2006 set 5/8" REBAR W/ CAP: RLS 44563, IN ROAD,
OPPOSITE FENCE LINE TO THE WEST.

Sketch of reference ties



N: 613,746.52
E: 2,135,482.13
MN SOUTH ZONE, NAD 83

Statement of evidence relative to this corner location is on back page

I hereby certify that this document and the data contained herein was prepared by me or under my direct supervision.

Thomas V. Zeff 4/19/06
THOMAS V. ZEFF Date

Registration No. 44563
 Land Surveyor, Professional Engineer
 County Surveyor, County Engineer

OFFICE OF THE COUNTY RECORDER

County of _____

I hereby certify that this document was filed in the Co. Recorders office at _____ .M. on the _____ day of _____ A.D. , 20 _____

County Recorder _____
By _____, Deputy

DOCUMENT NO. _____

STATEMENT OF EVIDENCE:

WEST 1/4 CORNER, SECTION 35, T. 104 N., R. 42 W.,
NOBLES COUNTY, MINNESOTA

1868 JEWETT & HOWE, U.S. DEPUTY SURVEYORS, MONUMENTED CORNER.
1901 MURRAY CO. HIGHWAY DEPT. SET STONE ON CORNER; NO TIES.
3/8/2006 ULTEIG ENGINEERS, INC. SURVEY CREW, BRIAN PAYNE PARTY CHIEF,
 FOUND NOTHING.
 SET 5/8" REBAR WITH CAP: RLS 44563 IN GRAVEL ROAD, OPPOSITE
 FENCE LINE RUNNING WEST.
 TIES: W-35.0' TO NAIL 'X' ON WOOD, FENCE POST;
 N-2659.22' TO NW CORNER, SECTION 35;
 S-2672.00' TO SW CORNER, SECTION 35.