

CERTIFICATE OF LOCATION OF GOVERNMENT CORNER

WEST 1/4 Corner of Section 4, Township 104, Range 42, 5TH P.M.

STATE OF MINNESOTA, County of NOBLES

At the corner location shown on the sketch :

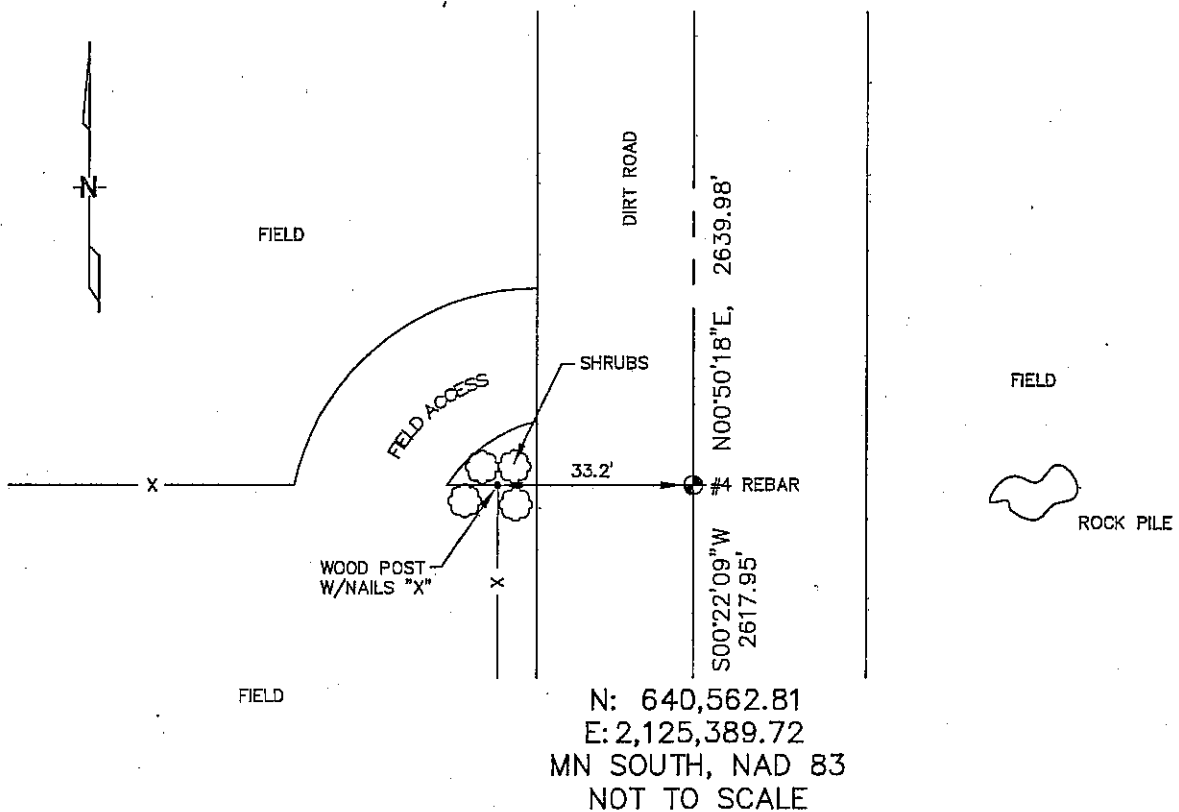
On 2/22/2006 found #4 REBAR IN C/L OF DIRT ROAD, OPPOSITE

A FENCE LINE RUNNING WEST & SOUTH.

left monument as found, lowered monument, removed monument (explain)

On _____ set _____

Sketch of reference ties



Statement of evidence relative to this corner location is on back page

I hereby certify that this document and the data contained herein was prepared by me or under my direct supervision.

Shawn V. Eff

 Signature

7/6/06

 Date

Registration No. 44563

Land Surveyor, Professional Engineer

County Surveyor, County Engineer

OFFICE OF THE COUNTY RECORDER

County of _____

I hereby certify that this document was filed in the Co. Recorders office at _____ M. on the day of _____ A.D. , 20

County Recorder _____

By _____, Deputy

DOCUMENT NO. _____

STATEMENT OF EVIDENCE:

WEST 1/4 CORNER, SECTION 4, T. 104 N., R. 42 W.,
NOBLES COUNTY, MINNESOTA

- 1868 Jewett & Howe, US. Deputy Surveyors, monumented corner.
- 1979 Nobles Co., found nothing; assumed location of corner and placed a bridge pin at location.
Ties: E-33.3' to nail & disc in fence post;
W-33.57' to nail & disc in fence post;
NW-44.84' to nail & disc in fence post.
- 2/22/2006 Ulteig Engineers, Inc., Survey Crew, Brian Payne Party Chief, found a #4 rebar in the C/L of the dirt road, opposite a fence line running west & south.
Ties: W-33.2' to corner, fence posts;
N-2639.98' to NW corner, Section 4;
S-2617.95' to SW corner, Section 4.